

Unique Features of the Danforth Educational Leadership Program



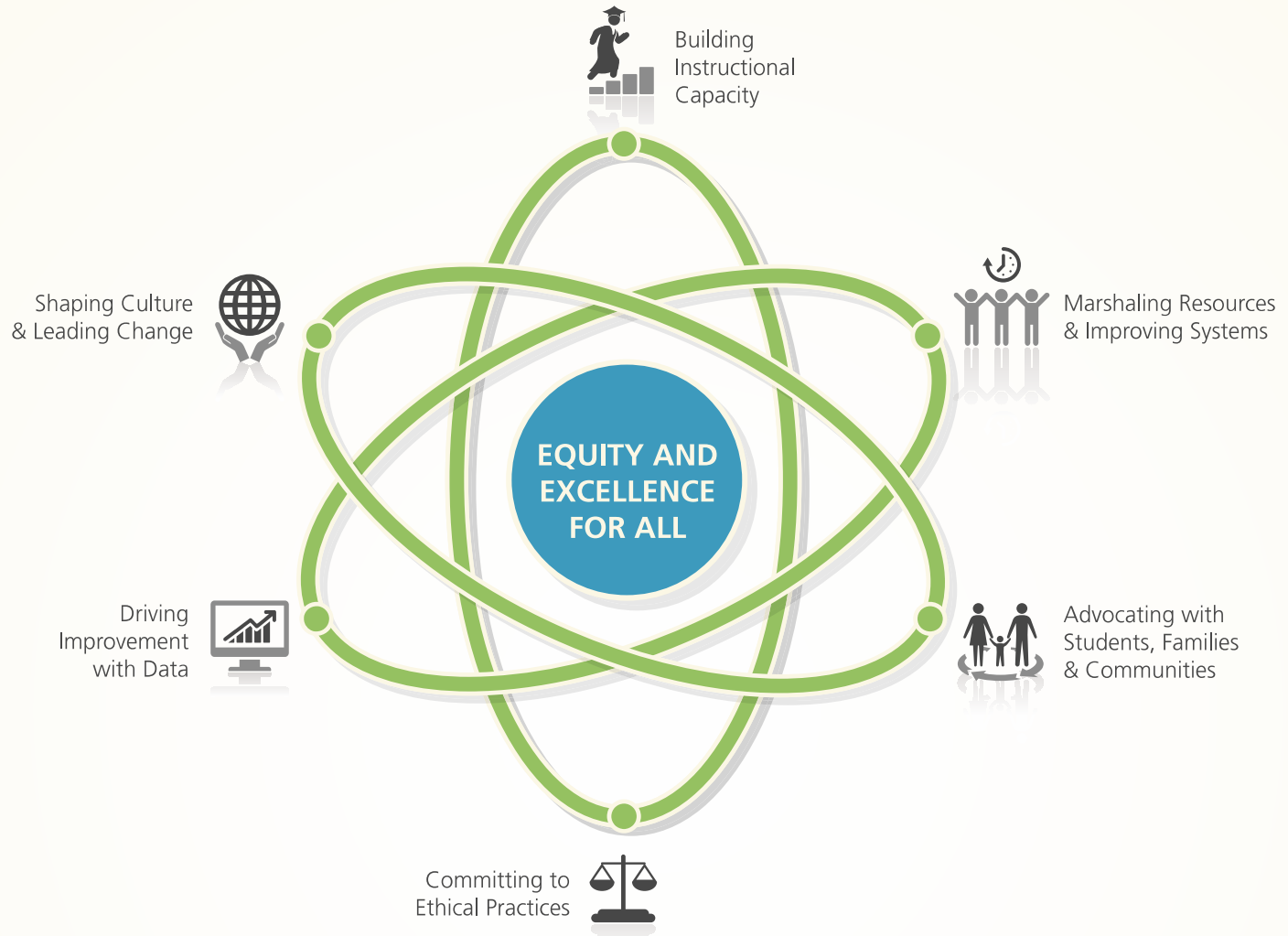
One-year, Integrated Coursework & Field-based Learning

Cohesive Cohort Design

1000 Hour Internship With 400 Hours Of Instructional Leadership

Coordinated Support: Mentor, Advocate & Director

What do principals need to know & be able to do to deliver on equity?





**STAND
BY ME**

**LEADERSHIP PROGRAM OFFERS
NEW PERFORMANCE GUARANTEE**



Dr. Ann O'Doherty & Dr. Stephen Fink

Shared Accountability Supported by a Unique Performance Guarantee



UW Center for Educational Leadership

Exemplary Preparation Includes

(Hitt, Tucker & Young, 2012)

Targeted Recruitment

Rigorous Selection

Coherent Coursework & Field Experiences

Maximized Social Networks

Analysis of Outcomes for Continuous Improvement

Danforth Alumni & Washington State Principals of the Year



Anissa
Bereano
2015



Keisha
Scarlett
2014



Kelly
Aramaki
2013



How might states further support leadership development? (Hitt, Tucker & Young, 2012)



For more information

www.danforth.uw.edu

annodoh@uw.edu

206.221.3452

[**www.ucea.org**](http://www.ucea.org)

