



WORKFORCE
DATA QUALITY
CAMPAIGN

Making Workforce Data *Work*

Rachel Zinn

WDQC Director

September 18, 2014

WorkforceDQC.org



WDQC Mission

- Advocate for **inclusive, aligned and market-relevant** education and workforce data that can help our nation's human capital policies meet the challenges of a changing economy.
- Promote federal and state reforms for data systems that provide useful information for **policymakers, students and workers, business leaders and educators.**
 - State Blueprint with 13 key features of a high-quality data infrastructure
 - Address federal legislation, funding and technical assistance
 - Policy agenda developed by broad coalition of national organizations, state leaders and technical experts across education/workforce spectrum

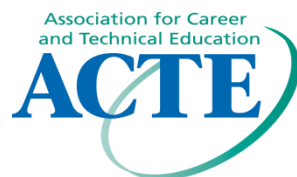
National Partners



NATIONAL SKILLS COALITION
Every worker. Every industry. A strong economy.



U.S. CHAMBER OF COMMERCE



IHEP
INSTITUTE FOR HIGHER EDUCATION POLICY



Funders



TheJoyceFoundation



What is Workforce Data?

Employment data

- UI wage records

Workforce program data

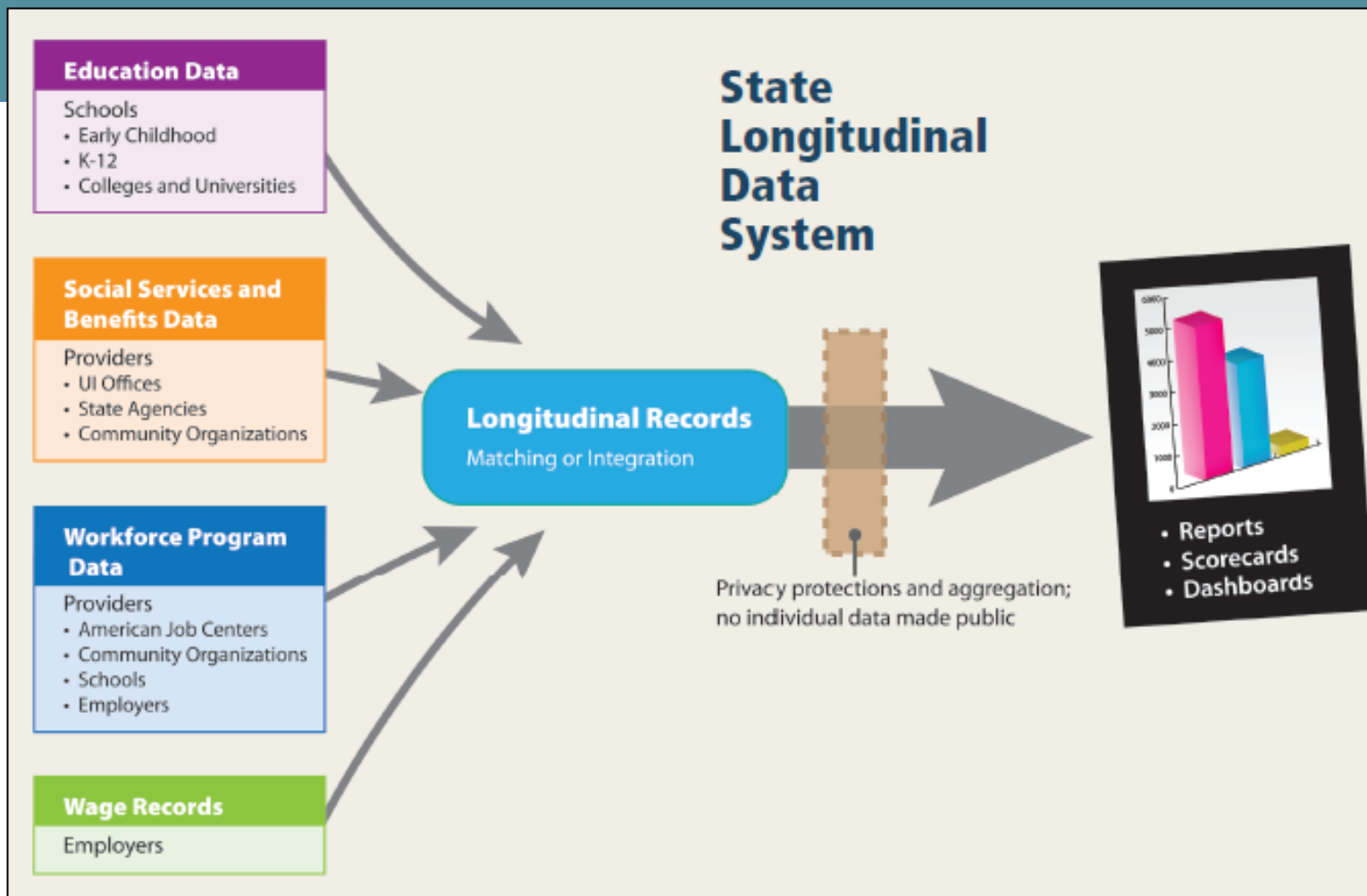
- WIOA, adult basic ed, CTE, etc.

Labor market information

- Federal/state surveys
- Administrative data
- Online job ads & resumes



State Data Systems



Privacy Protections

- Limited linkages
- Restricted access to linked data
- Only aggregate data released



State Blueprint: Including All Students & Pathways

Inclusive cross-agency council

- Utah Data Alliance
- Indiana law mandates governance

Count more students

- Workforce programs (e.g. North Dakota)
- For-profit career schools (e.g. New Jersey)

Metrics for career pathways

- Alliance for Quality Career Pathways



State Blueprint: Industry-Recognized Credentials

Capture Diverse Credentials

- Little data on licenses & certifications
- Pilots: CompTIA; Workforce Credentials Coalition

Industry Validation

- Few statewide efforts
- Wisconsin technical colleges



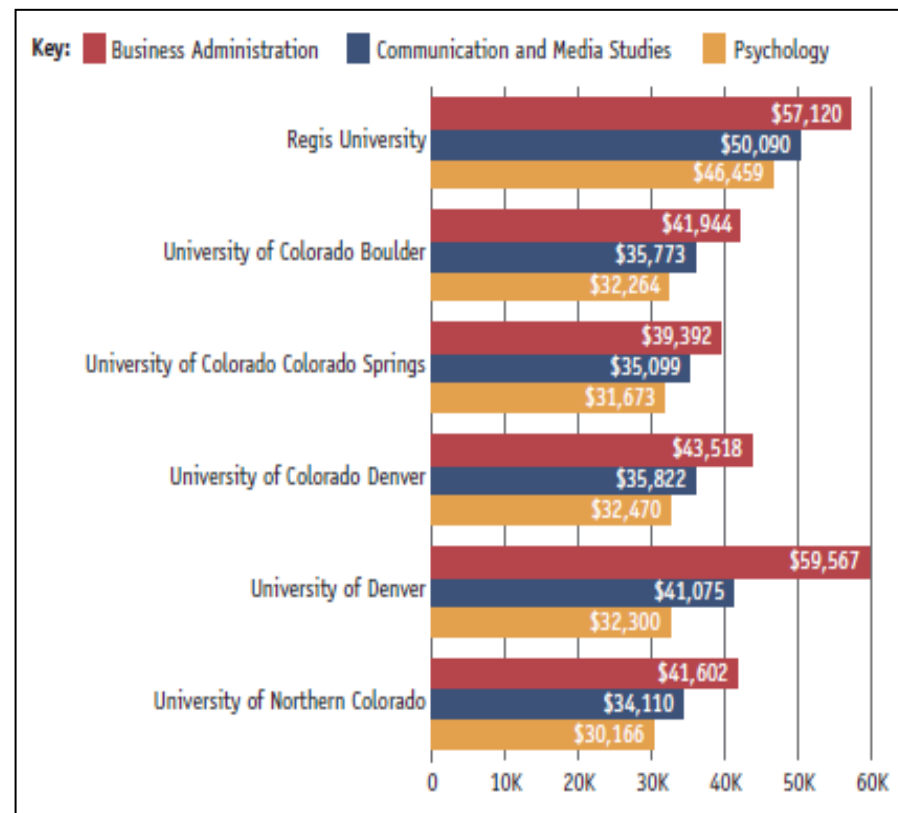
State Blueprint: Assessing Employment Outcomes

Know if graduates get jobs

- State laws on UI wage records vary
- California community colleges
- New York legislation

Cross-state data sharing

- WRIS/WRIS2 systems
- Regional data sharing (e.g. WICHE)



State Blueprint: Expanding Use of Labor Market Info

Labor Market Info. Capacity & Use

- Program alignment w/market demand

Industry Skills Gaps

- Assess key occupations (e.g. Ohio)
- Business attraction (e.g. Mississippi)



State Blueprint: Ensuring Data Access & Use

Scorecards for students and workers

- College Measures websites
- WIOA training (e.g. Washington)

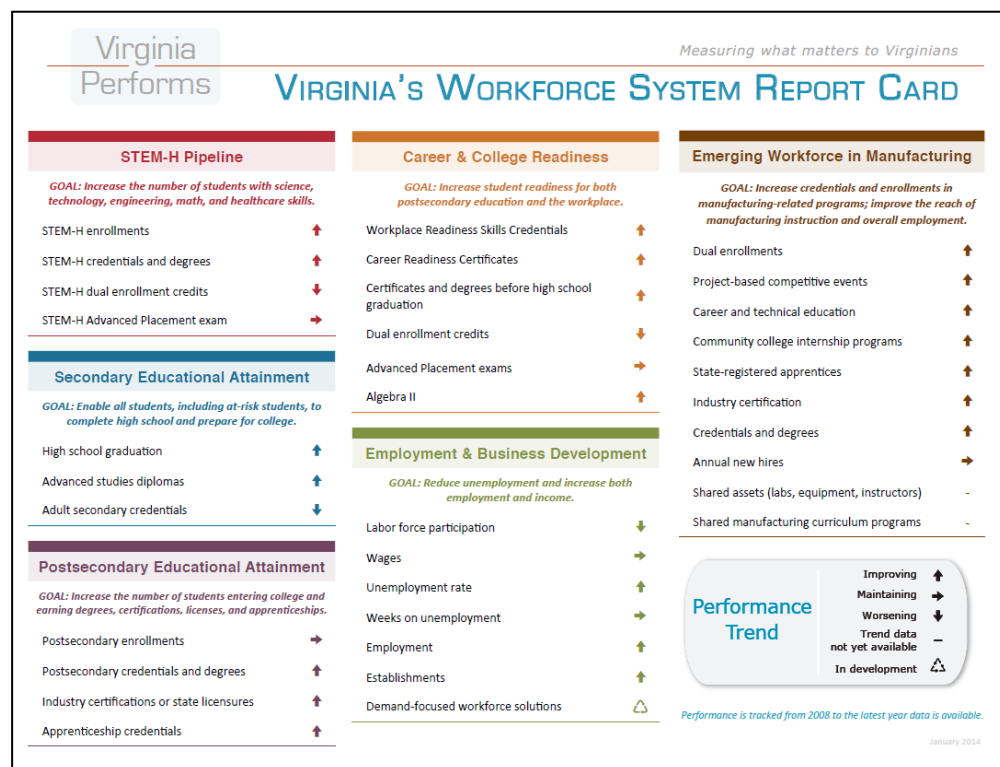
Feedback reports to programs

- Kentucky technical colleges

Dashboards for policymakers

- Virginia's new tool

State Funding





WORKFORCE
DATA QUALITY
CAMPAIGN

Contact

Rachel Zinn, Director
rachelz@workforcedqc.org
202-223-8355, ext. 113

WorkforceDQC.org

