

# The Meaning Public Service: The Allegory of the Cave

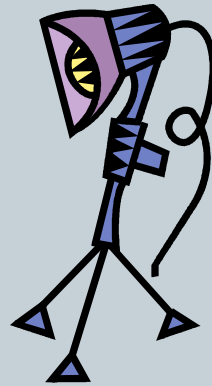


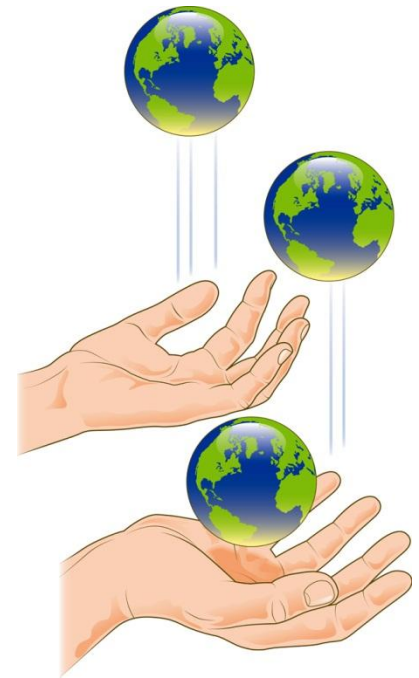
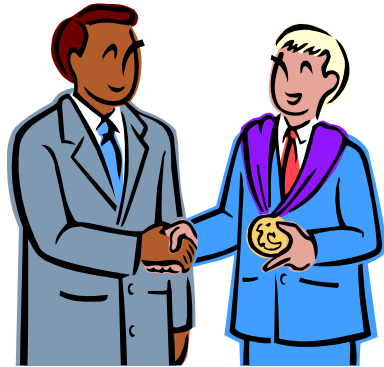
**THOMAS H. LITTLE, PH.D., DIRECTOR OF  
CURRICULUM DEVELOPMENT AND RESEARCH,  
STATE LEGISLATIVE LEADER FOUNDATION;  
LECTURER, UNC GREENSBORO**

**NCSL SYMPOSIUM FOR EMERGING LEADERS  
OCTOBER 30, 2013**



# Why did you run for the legislature?

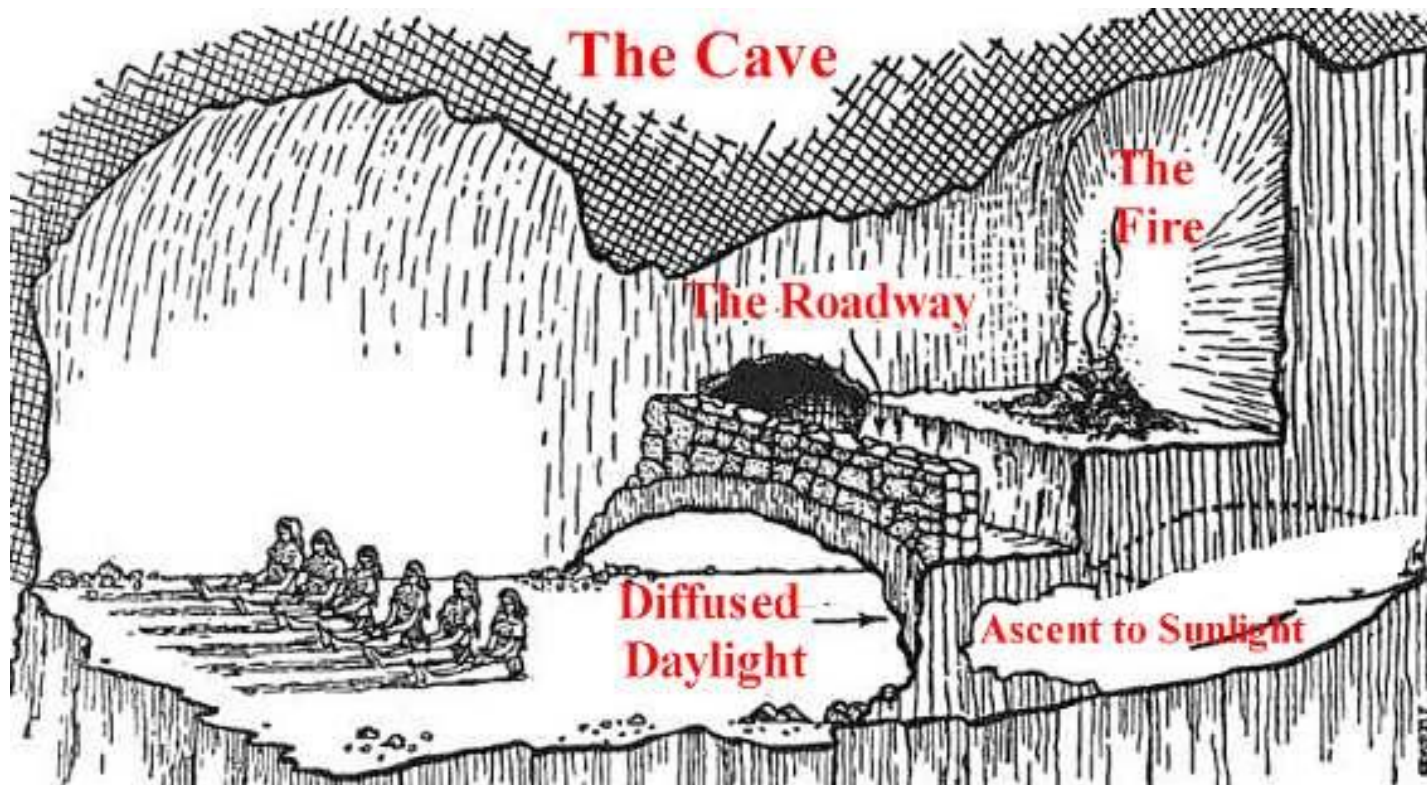






# What Does it Mean to Be a Public Servant?

# Plato's Allegory of the Cave

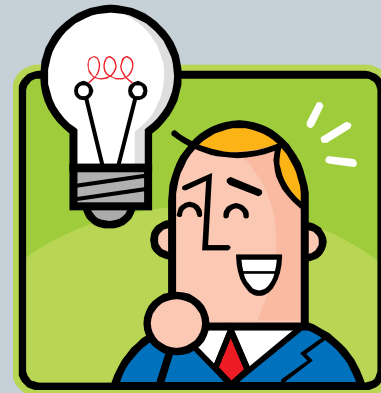


# What are the Different Perspectives Here?



- The people in chains.
- The person who leaves the cave.
- The person on the bridge.

In what ways, if any,  
have you been  
“enlightened” since  
being elected to the  
legislature?





What is the biggest public policy  
problems facing your state right  
now?



# Lets Discuss the Challenges of One of the Issues



- What do constituents believe?
- What are some hard realities?
- What are the challenges for bringing folks into those realities?
- What are the potential costs to the public servant?
- What are the potential benefits to the public servant?



“I don’t want  
to be a dead  
hero. I want  
to be a live  
me!”

Rafe  
Hollister

# Strategies for Leading “out of the dark”



- Identify the problem.
- Identify key stakeholders.
- Understand each one’s version of the dark.
- Educate stakeholders.
- Convene stakeholders.
- Know the risks of action. Of inaction.
- Lead!



---

# Why Don't We Lead Out of the Dark?

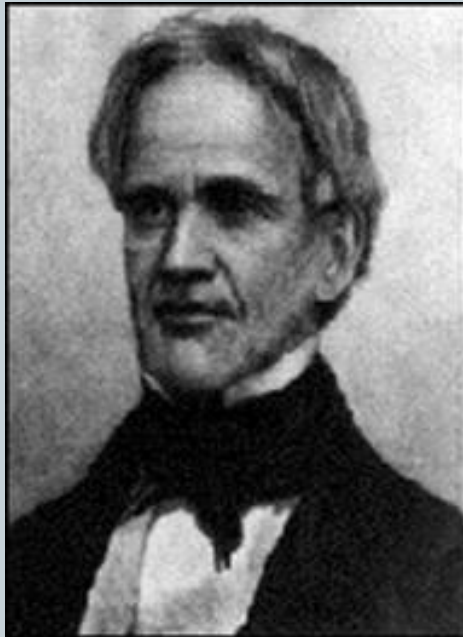
- Status Quo
- The Next Election
- Your desire to survive
- The necessity for cooperation
- Fear of Failure

Think about doing this in  
particular policy areas

---

- Education
- Health Care
- Environment
- Immigration

# The True Meaning of Public Service



“Be ashamed to die until  
You have won some  
victory for humanity.”

Horace Mann, Educator, Scholar,  
State Senator (1796-1859)