



Beyond the Blue Bin – Recycling is Not Waste or Disposal



Gregory L. Crawford,
Executive Director
August 7, 2012



What is Recycling?

“Passing again through a series of changes or treatments to process in order to regain for human use.”

Merriam-Webster (1926)

“Recycle” vs. Recover, Reclaim, Reuse, Regain, Repurpose



Why Do We Recycle?

- Economics - Saves Money
- Environment - Conserves Resources
 - Energy
 - Water
 - Other Natural Resources
- Saves Landfill Space



Why Do We Recycle STEEL?

- Economics - Saves Money - Substitution Cost
- Environment - Conserves Resources
 - Energy: 5450 BTU saved per lb. of steel
 - Saves Per Ton of Steel:
 - Coal - 1,400 lbs
 - Iron Ore - 2,500 lbs
 - Limestone - 120 lbs
- Saves Landfill Space
 - 1 cubic yard whole steel cans = 150 lbs
 - 1 cubic yard flattened steel cans = 850 lbs



Does Recycling Save Money?

- COSTS
 - Collection
 - Processing
 - Transportation
 - Mill Operation
- REVENUE - Sale of Material
- SAVINGS - Landfill Cost Avoidance
- BUSINESS - Profit/Loss
- GOVERNMENT - Under/Over Budget



What are the Recycling Options?

- Residential
 - Curbside
 - Drop-off
 - Buy-back
 - Deposit
 - Waste-to-Energy
- Commercial
 - Scrap Dealer
 - Business/Government
 - Industrial
 - Construction & Demolition
 - Waste-to-Energy



A Partnership in Steelmaking

- There are two types of steelmaking processes in North America—both produce steel with recycled content.
 - Basic Oxygen Furnace uses a minimum of 25 percent recycled steel on average
 - Electric Arc Furnace uses 60 to 90 percent recycled steel
- Both use scrap to save natural resources and energy.
- Both are necessary to meet the increasing global demand for a wide array of steel products.
- The overall recycling rate is more important than recycled content for expressing long term scrap consumption.



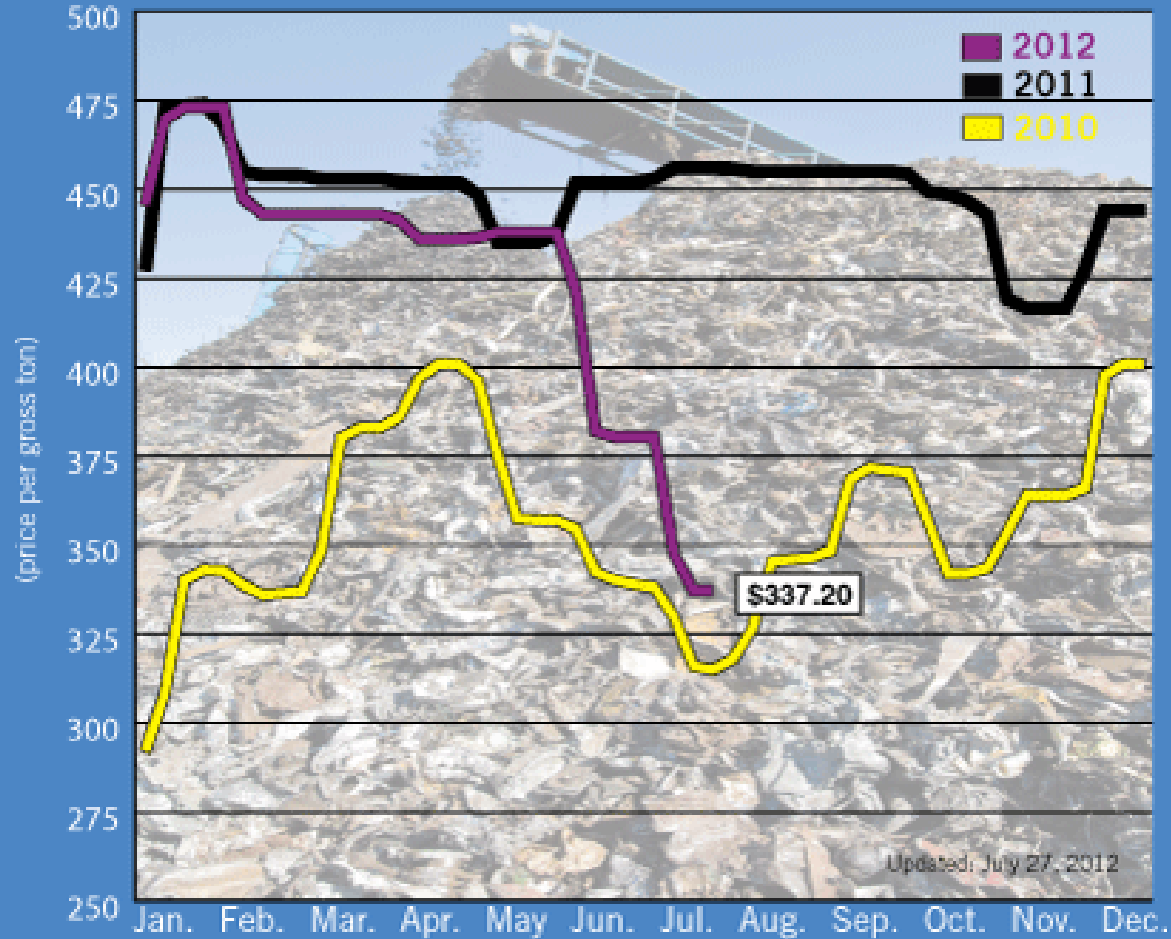
What are the **STEEL** Recycling Options?

- “Home Scrap” (Pre-Industrial) -
Unsalable steel product at mill
- “Prompt” Scrap (Post-Industrial) -
Remnant steel from manufacturing
- “Obsolete” Scrap (Post-Consumer) -
Steel products at end of useful life



Shredded Scrap Price

AMM Weekly Shredded Scrap Price Composite



Updated: July 27, 2012

Based on markets in Birmingham, Pittsburgh, Chicago, Philadelphia and Houston.
Source: AMM



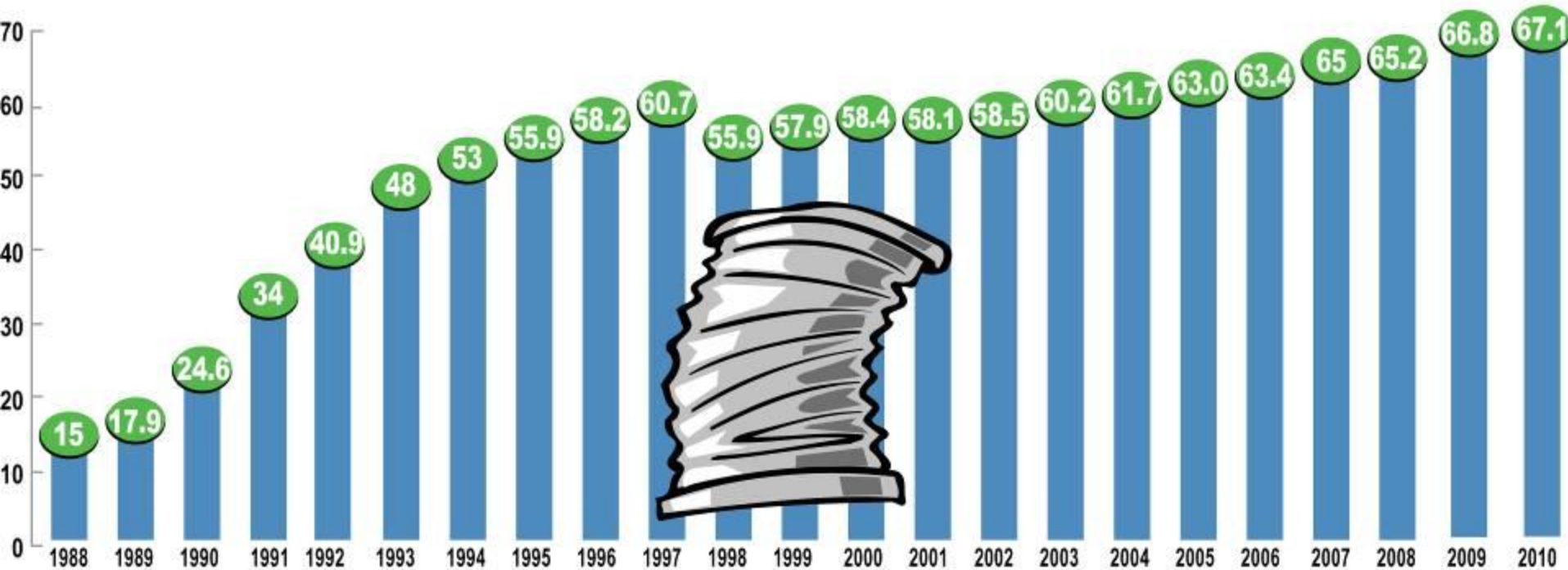
Steel Products – A Living Scrap Inventory

- Cans - 1 Year or Less
- Autos - 12 Years
- Appliances - 18 Years
- Construction - 50-100 Years or More



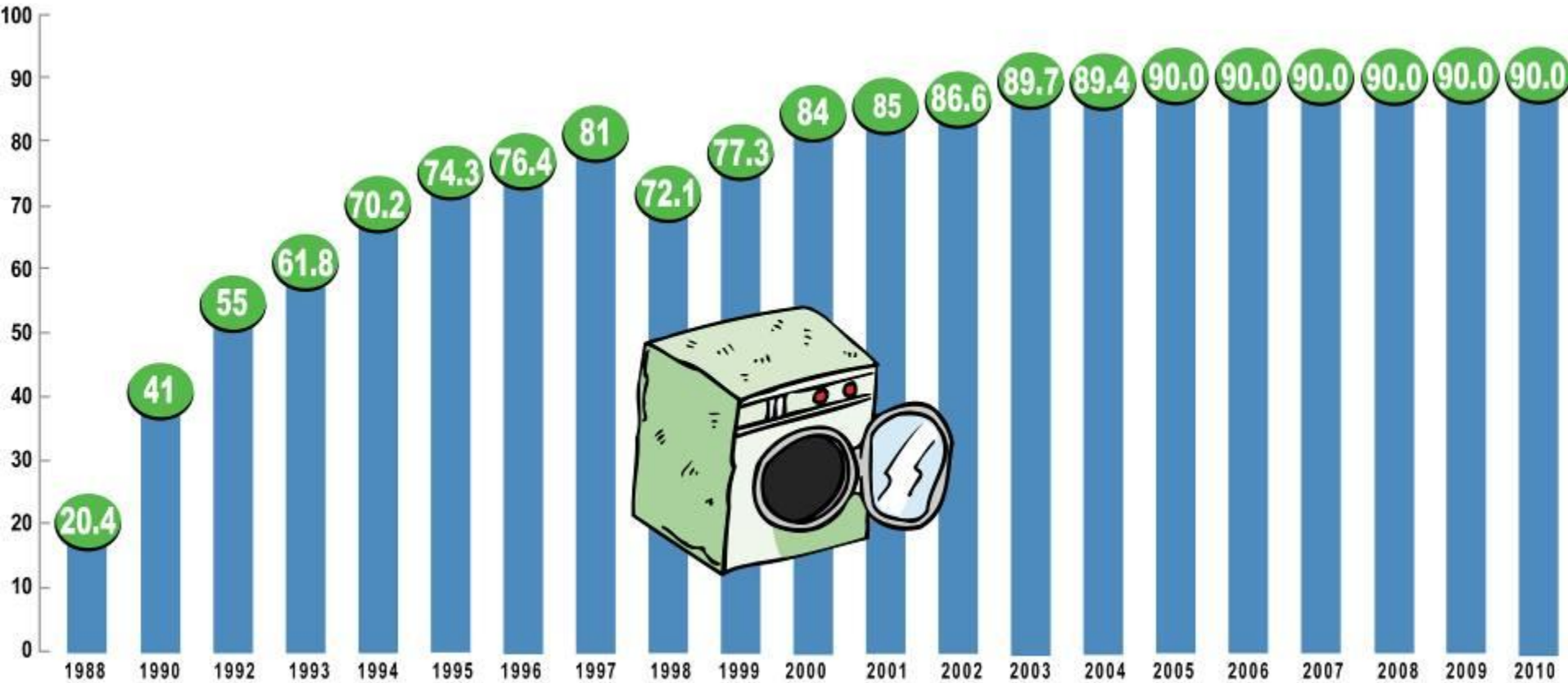


Steel Can Recycling Rates



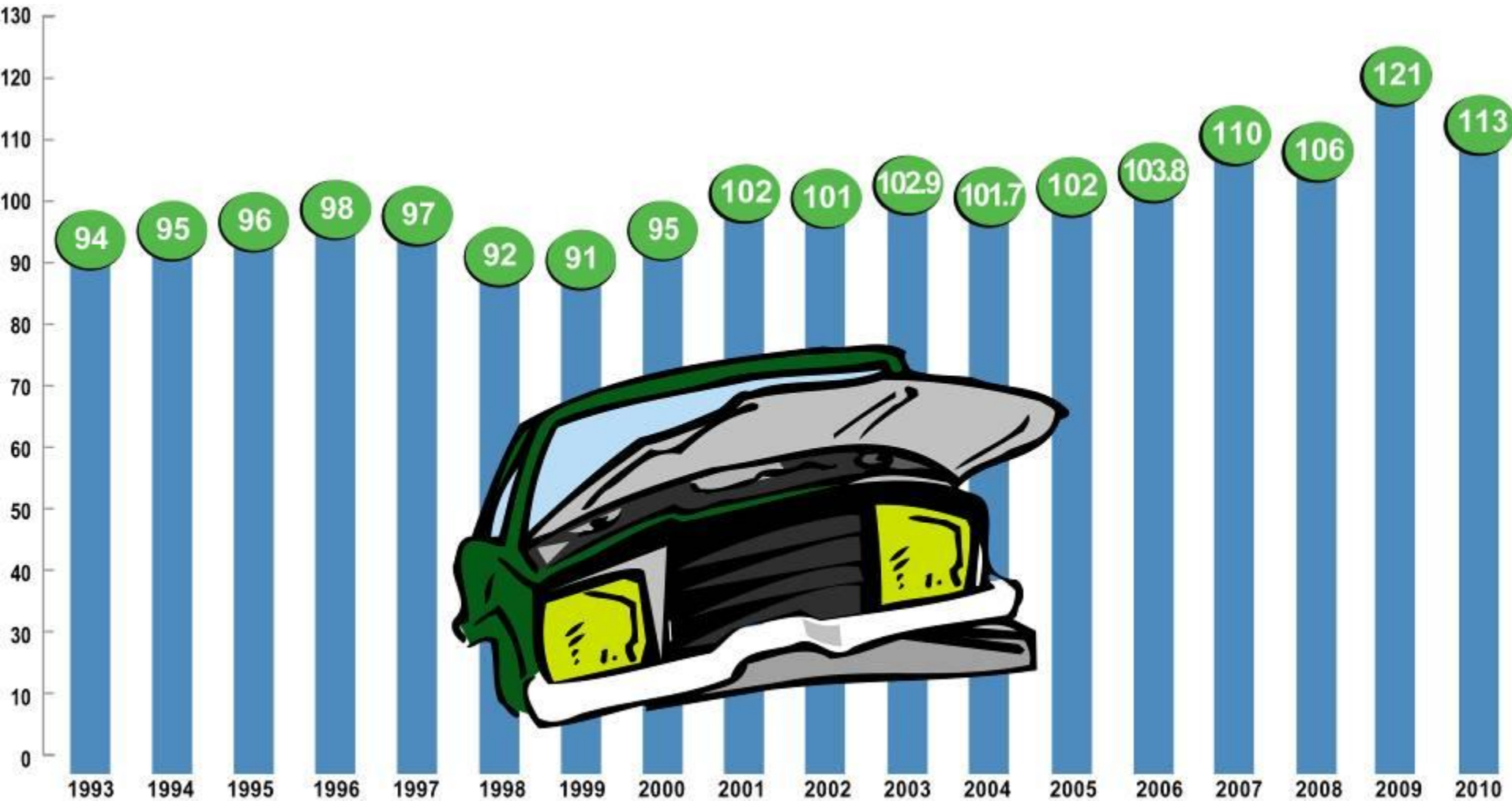


Appliance Recycling Rates



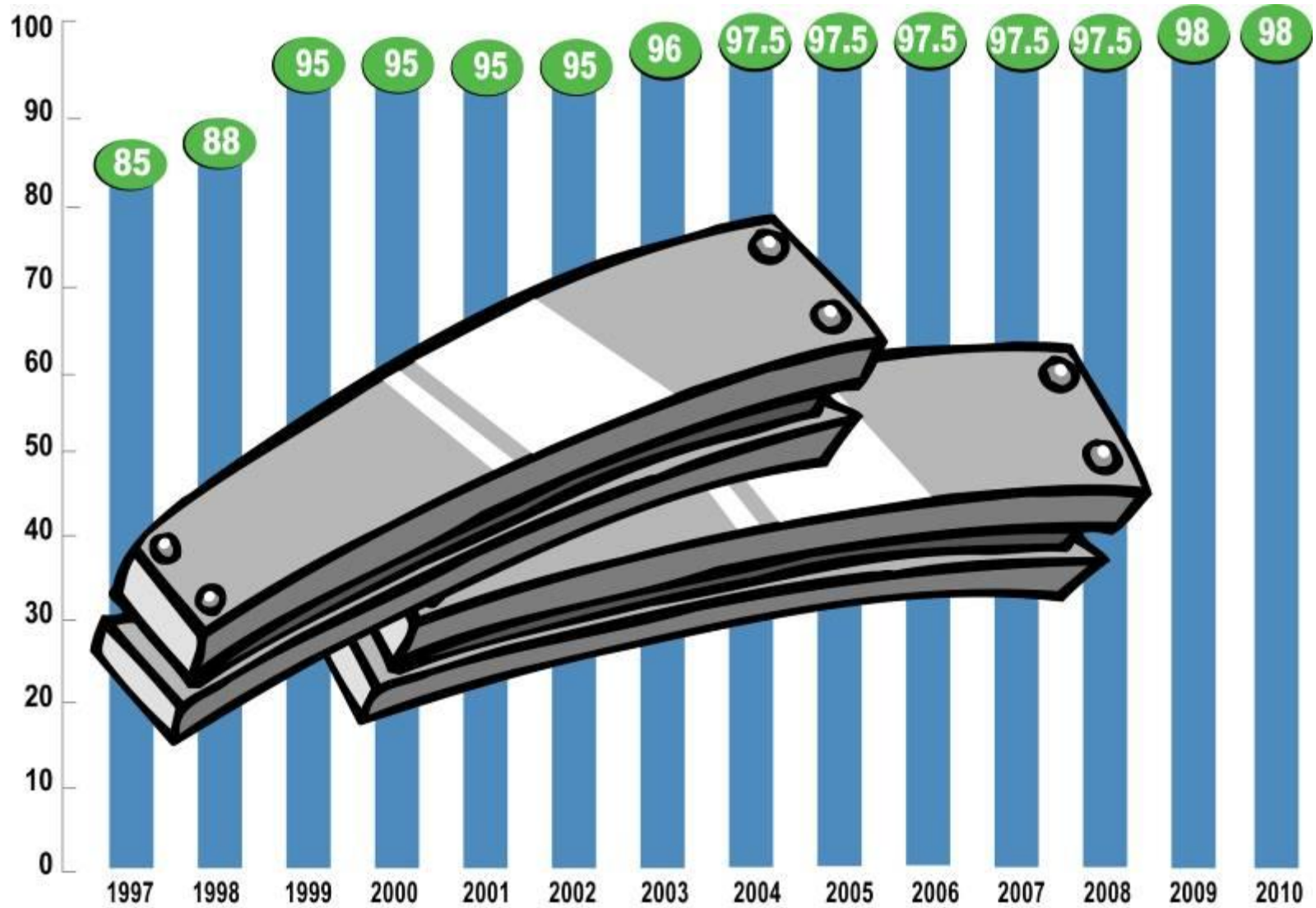


Automobile Recycling Rates



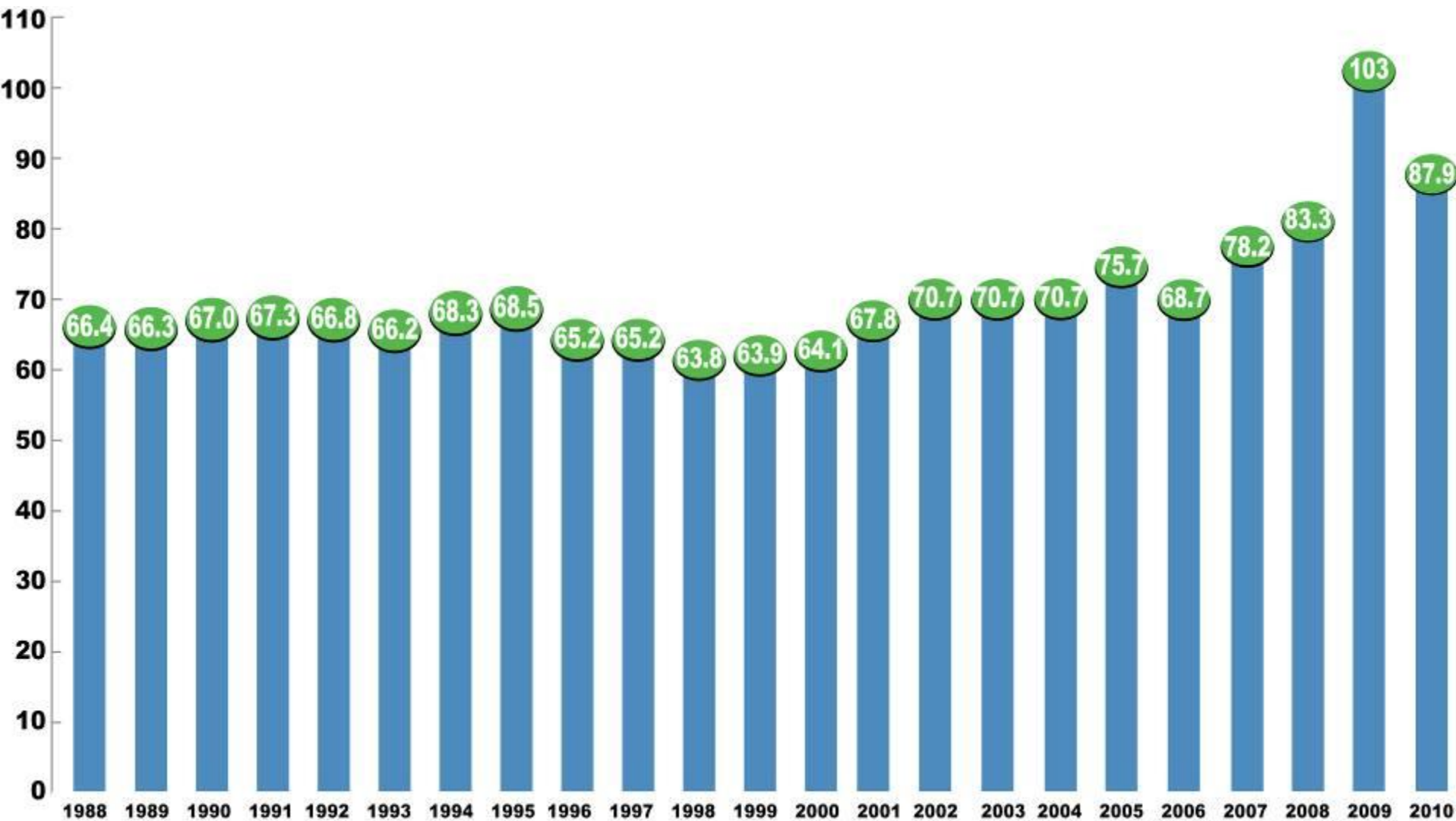


Steel Construction Recycling Rates





Overall Recycling Rates





2010 Steel Recycling Achievement

- Overall Steel Recycling Rate in U.S. = 87.9%
- 75.9 Million Tons of Steel Recycled (domestic/export)
- Old Steel becomes New Steel . . .
- New Steel becomes Old Steel . . .



Future Steel Products Generate Demand for Steel Scrap

- Ultralight Steel Auto Body
- Steel Bridges
- Steel Utility Poles
- Residential Steel Framing





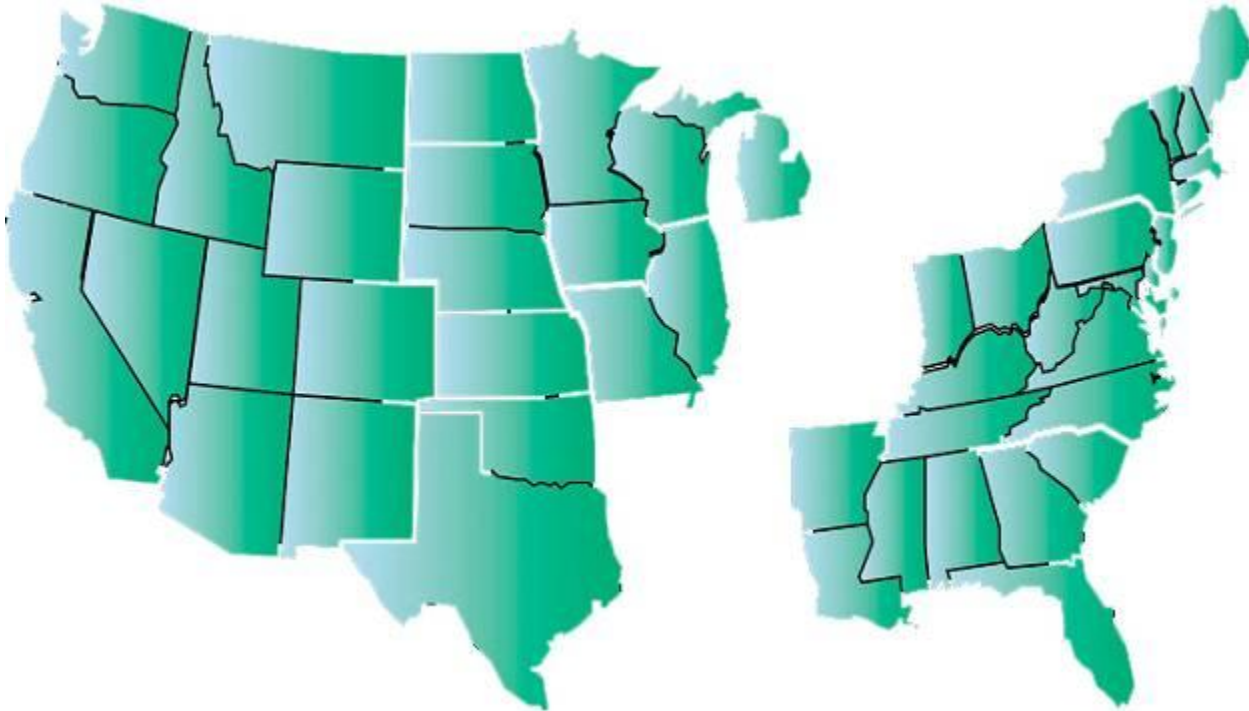
Ferrous Scrap Dealers

- Decades of Steel Recycling Experience
- Convenient Locations
- Container and Transportation Capabilities
- Complete Processing Equipment
- Strong Relationships with End Markets





Steel Recycling Institute



WESTERN REGION

Dave Keeling
General Manager
Steel Recycling Institute
P.O. Box 160
Big Bend, WI 53103
262.662.4435
dkeeling@steel.org

EASTERN REGION

Suzette Thomason
General Manager
Steel Recycling Institute
57 Newport Street
Cantonment, FL 32533
850.479.7208
sthomason@steel.org

NATIONAL

Gregory L. Crawford
Executive Director
Steel Recycling Institute
680 Andersen Drive
Pittsburgh, PA 15220
412.337.6476
gcrawford@steel.org

Jim Woods
Director, Public and
Education Relations
Steel Recycling Institute
680 Andersen Drive
Pittsburgh, PA 15220
412.922.2772 x215
jwoods@steel.org

Walter J. "Chip" Foley
Director, Public Policy/
Market Development Steel
Recycling Institute 1140
Connecticut Ave NW
Washington, DC 20036
202.452.7177
wjfoley@steel.org



Any Questions?

