



Western Regional Partnership Overview

June 2013

Briefing Overview



- WRP Background
- Importance of Region
- WRP Tribal Relations Committee
- WRP Energy Committee

WRP Region's Uniqueness

- ❑ 5 states stretching from the Great Plains to the Pacific Ocean
- ❑ Diverse terrain ranging from desert valleys to forested mountains
- ❑ Significant State Trust Landholdings
- ❑ Approximately **188 Federally recognized Tribes**
- ❑ Significant amounts of Federally managed land
 - According to GSA 2004 study, WRP states range from 41.8% - 84.5% of total state land

WRP Region's Importance to DoD

□ Extensive Training Ranges

- Interconnected ground/air ranges provide unmatched warfighter training opportunities
- Includes major facilities such as Barry M. Goldwater Range; Nevada Test & Training Range (NTTR); Fallon Naval Air Station; Hill AFB/Utah Test & Training Range (UTTR); Yuma Proving Ground; Fort Bliss (89%); Fort Irwin; Twentynine Palms

□ Premier Testing Facilities

- World renowned Testing and Evaluation activities and facilities
- Includes NTTR, UTTR, Edwards AFB, NAWS China Lake, Yuma Proving Ground, Fort Huachuca, White Sands Missile Range, Kirtland AFB, Dugway Proving Ground

□ Unmatched Military Air Space

- Vast Military Special Use Airspace enables air-to-air, air-to-ground, and air-to-sea operations
- 11,000 square nautical miles of over-land supersonic airspace (NTTR)
- Includes R-2508 Complex - largest jointly (Navy, Air Force, Army) managed restricted airspace complex in the United States (20,000 square miles)

□ Resource Management

- Potential solar, geothermal, nuclear, and other energy capabilities within DoD installations' borders
- Includes nation's 2nd-largest photovoltaic array (14.2 MW @ Nellis), China Lake Geothermal
- Pristine cultural and natural resources uniquely protected on restricted-access ranges

WRP Region's Importance to DoD

(continued)

□ Army

- ~40% of the Army's landholdings
- Provides diverse terrain ranging from desert valleys to forested mountains for optimum testing and training conditions

□ Navy

- Over 33% of Navy's landholdings
- Fallon Range Training Complex - ALL Carrier Air Groups training at FRTC prior to every aircraft carrier deployment, 80% of all Navy practice bombs are dropped on Fallon ranges
- Home of the Navy's Top Gun School and the Blue Angels

□ Marine Corps

- 85% of Marine Corps' airspace
- 67% of Marine Corps' Live Fire Ranges

□ Air Force

- Includes four of the largest USAF range complexes - Edwards, Nellis/Creech/NTTR; Luke/Goldwater; and the Utah Test and Training Range
- 75% of Air Force's live ordnance used in training dropped on NTTR
- Home of the USAF Thunderbirds, Red Flag, and Weapons School

WRP Mission



WRP Mission

WRP provides a **proactive and collaborative framework for senior-policy level Federal, State and Tribal leadership** to identify **common goals and emerging issues** in the states of Arizona, California, Nevada, New Mexico and Utah and to **develop solutions that support WRP Partners and protect natural resources, while promoting sustainability, homeland security and military readiness.**

WRP Charter



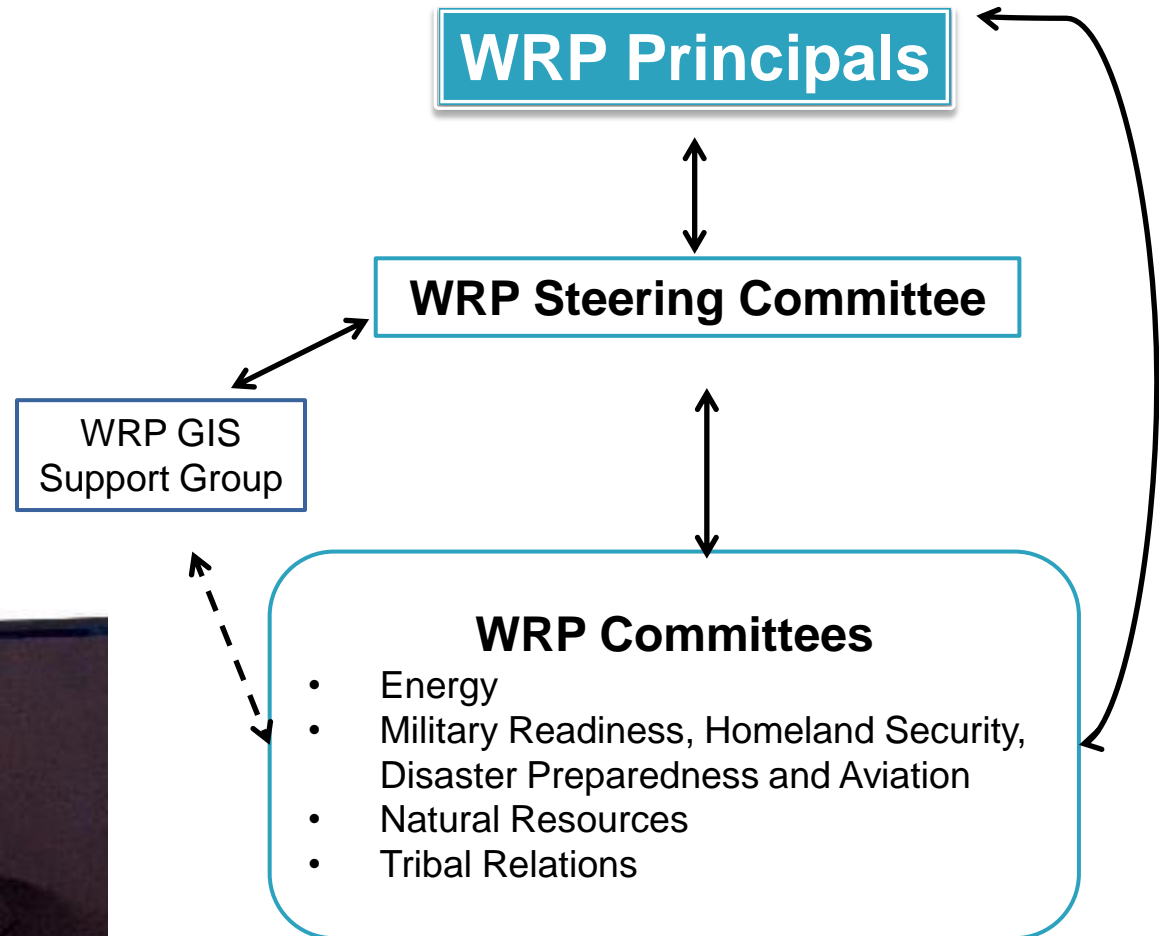
The goals of the WRP are to:

- ❑ Promote **improved regional coordination** and serve as a catalyst for open, positive dialogue among Partners
- ❑ **Address common goals**, identify and solve potential conflicts and **develop solutions that protect our natural resources**, while promoting **sustainability and mission effectiveness**
- ❑ Work towards making the West **a more sustainable region**
- ❑ **Serve as a resource** to formulate recommendations that support the WRP mission
- ❑ Develop a GIS Sustainability Decision Support Tool **that integrates** appropriate federal, tribal, state, and other available data sources for use in regional planning by the WRP and others when requested
- ❑ Operate through **consensus**

WRP Structure

WRP Co-Chairs:

- ❑ Honorable Gary Herbert, Governor of Utah
- ❑ Mr. John Conger, Acting Deputy Under Secretary of Defense for Installations and Environment
- ❑ TBD, DOI



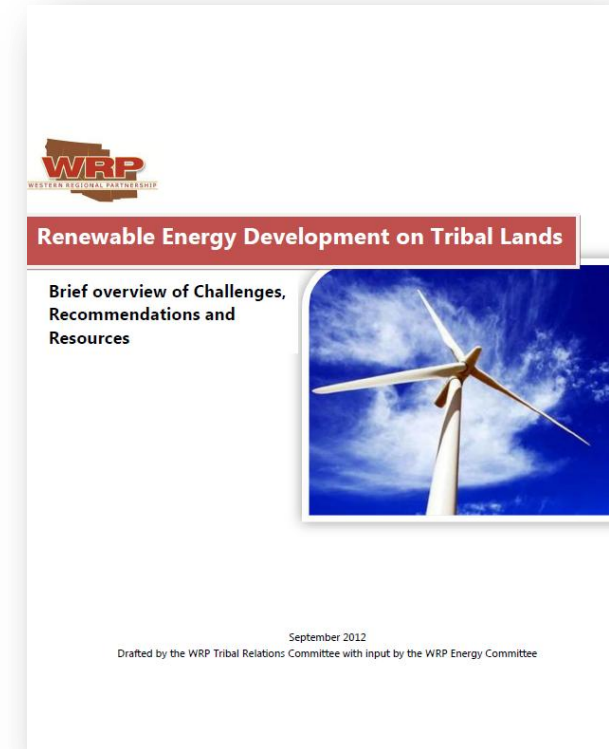
WRP Steering Committee



- Representatives of each of the five WRP States:
 - Arizona, California, Nevada, New Mexico and Utah
- Bureau of Indian Affairs
- Bureau of Land Management
- Bureau of Reclamation
- Customs and Border Protection, U.S. Border Patrol
- Federal Aviation Administration
- Federal Emergency Management Agency
- Federal Highway Administration
- National Park Service
- Natural Resources Conservation Service
- National Oceanic and Atmospheric Administration
- Office of Secretary of Defense
- U.S. Air Force Headquarters
- U.S. Army
- U.S. Army Corps of Engineers
- U.S. Coast Guard
- U.S. Environmental Protection Agency
- U.S. Fish and Wildlife Service
- U.S. Forest Service
- U. S. Geological Survey
- U.S. Marine Corps Installations West
- U.S. Navy
- Native American Leadership:
 - Navajo Nation, Inter-Tribal Council of CA, Inc.
- Western Governors Association Liaison

Tribal Relations Committee 2013 Priorities

- Refine and follow up on actions identified in WRP Tribal Relations Communications Plan
- Update with Energy Committee the WRP “Renewable Energy Development on Tribal Lands: Brief overview of Challenges, Recommendations and Resources”
- Build Tribal capacity and broader collaboration network
- Build Tribal participation in WRP Committees and projects



WRP Tribal Relations Committee Co-Chairs:

- Arthur Allison, Cabinet Secretary, New Mexico Indian Affairs Department
- Connie Reitman, Executive Director, Inter-Tribal Council of CA, Inc.
- Clayton Honyumptewa, Manager, Department of Natural Resources, The Hopi Tribe
- Alvin Moyle, Fallon Paiute Shoshone Tribe

WRP Energy Committee

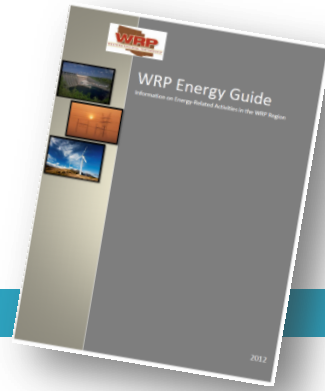
On-Going Goals



The Committee will:

- Continue to share information, include all major entities (and encourage additional energy proponent and industry participation) within WRP region and work with WRP Partners to ensure WRP efforts add value and do not duplicate efforts
- Coordinate with other WRP Committees on energy related issues including continued involvement in WRP Mojave and WRP Southeastern Arizona/New Mexico project, which includes an energy component
- Work to better integrate agency reviews into state, federal and Tribal permitting process by reviewing existing efforts and share best practices

WRP Energy Committee 2013 Strategic Goals



- Work among WRP Committees
 - To highlight in the WRP region:
 - Tribal, Federal and State renewable energy goals
 - Energy development and energy security issues
 - Impacts on the military mission, natural and cultural resources, and Tribal lands
 - To develop recommended solutions to energy impacts
- Participate in the 2012-2013 WGA's Energy Initiative
- Engage, as appropriate, in any reevaluation of the Section 368 West-wide Energy Corridors (WWEC) transmission study to provide WRP State, Federal and Tribal input
- Continue to populate the WRP Energy Point of Contact database
- Work with the WRP GIS Support Group to ensure best energy and related data is available in the WRP Web Mapping Application
- Provide regular Committee related-updates
- Finish WRP Energy Guide

Thank you

- We appreciate the opportunity to work with DOE

Thank You!