

# Chilocco Wind Park

A photograph of a wind farm. In the foreground, a large white wind turbine stands prominently, its three blades extending outwards. The blades have red and white stripes near the tips. In the background, several other similar wind turbines are visible, scattered across a green field. The sky is a clear, pale blue. The overall scene is bright and clear.

**Cherokee Nation (other nations as well)**

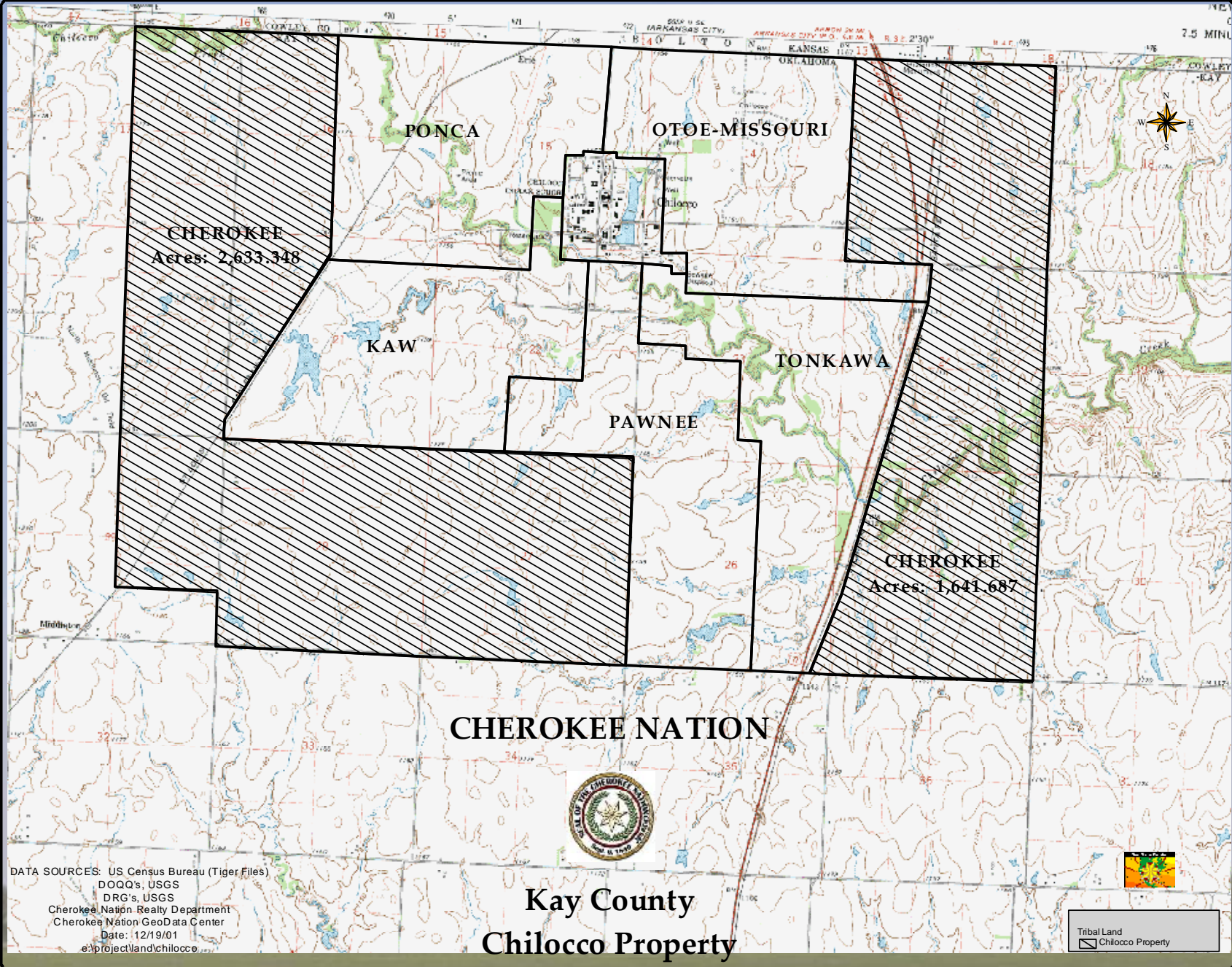
**Cherokee Nation Businesses, LLC**

**And**

**PNE Wind**

# Cherokee Chilocco Wind North Central Oklahoma Location





**CHEROKEE**  
Acres: 2,633,348

**PONCA**

**OTOE-MISSOURI**

**KAW**

**PAWNEE**

**TONKAWA**

**CHEROKEE**  
Acres: 1,641,687

**CHEROKEE NATION**

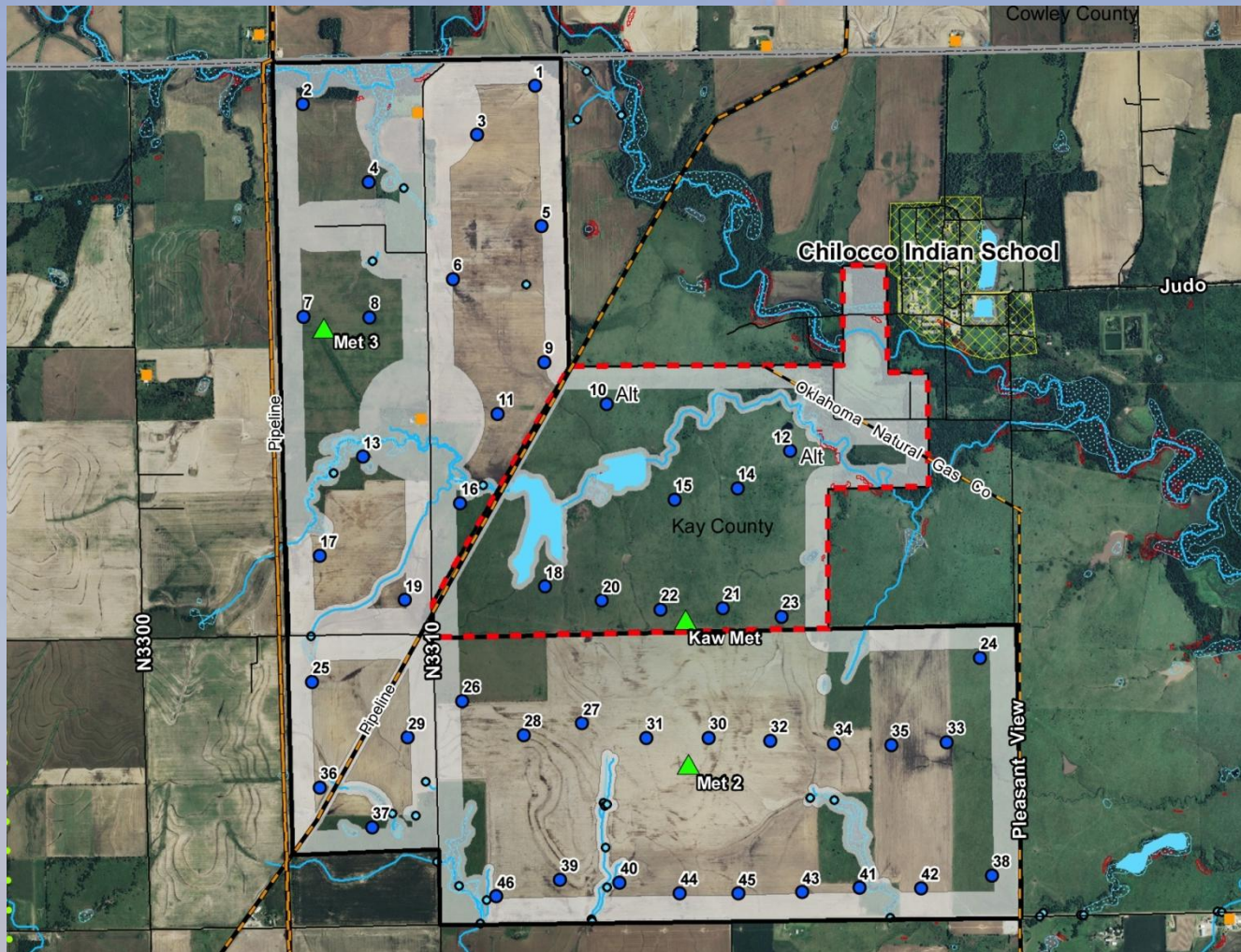


**Kay County**  
**Chilocco Property**

DATA SOURCES: US Census Bureau (Tiger Files)  
DOQQ's, USGS  
DRG's, USGS  
Cherokee Nation Realty Department  
Cherokee Nation GeoData Center  
Date: 12/19/01  
e:\project\land\chilocco

Tribal Land  
Chilocco Property

# Turbine Layout



# Cherokee Wind



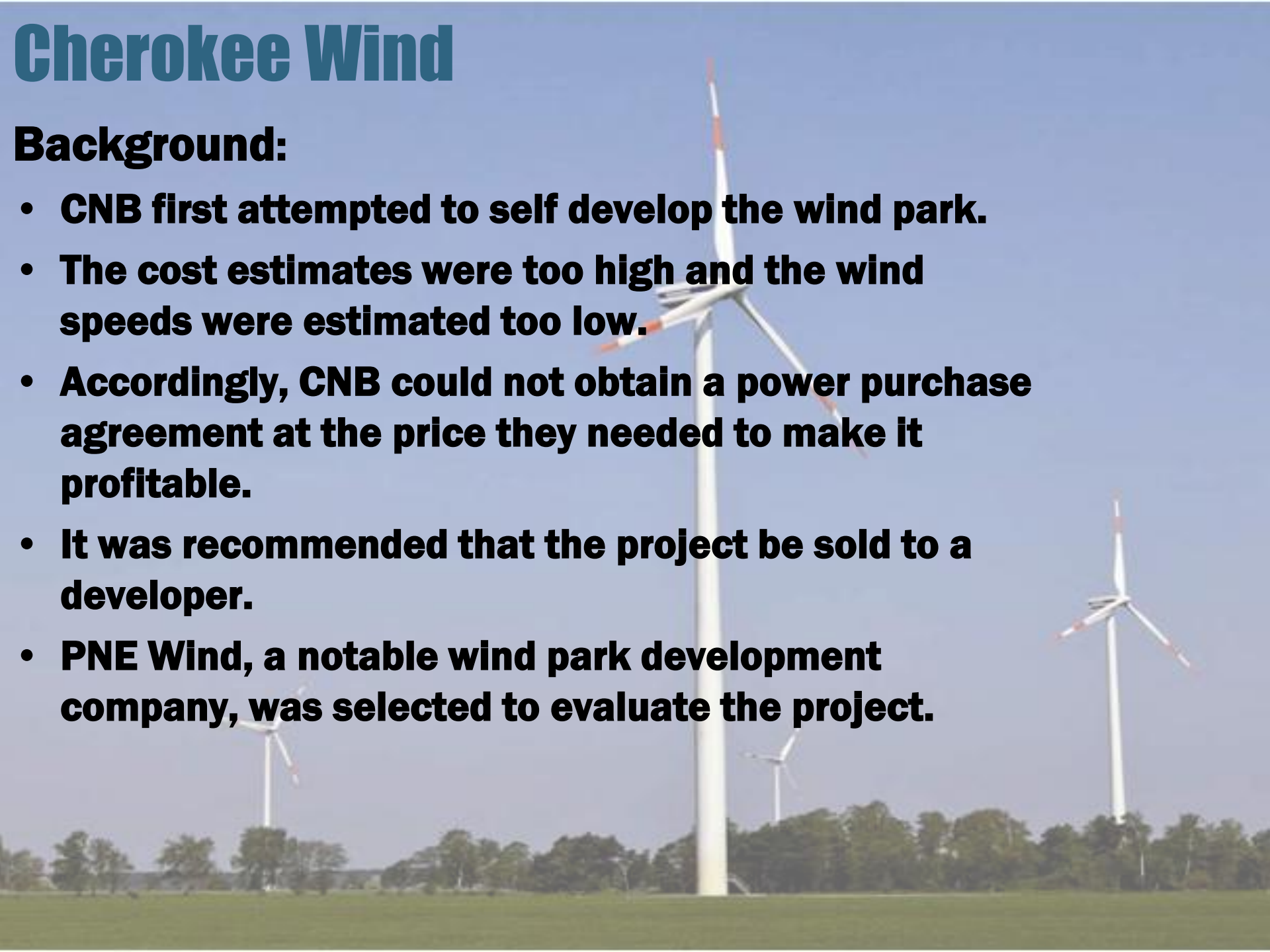
## Status of Area Tribes:

- **Ponca – Their land would be a possible site for two turbines but they have not been approached. They previously expressed no interest.**
- **Otoe - Missouri – They have expressed an interest but their land is not suitable.**
- **Kaw – Their land is desirable for 8 to 9 turbines. They have been approached and have agreed.**
- **Pawnee – Their land would be a possible site for two turbines but they have not been approached. They previously expressed no interest.**
- **Tonkawa – Their land is not suitable and they have expressed no interest.**

# Cherokee Wind

## Background:

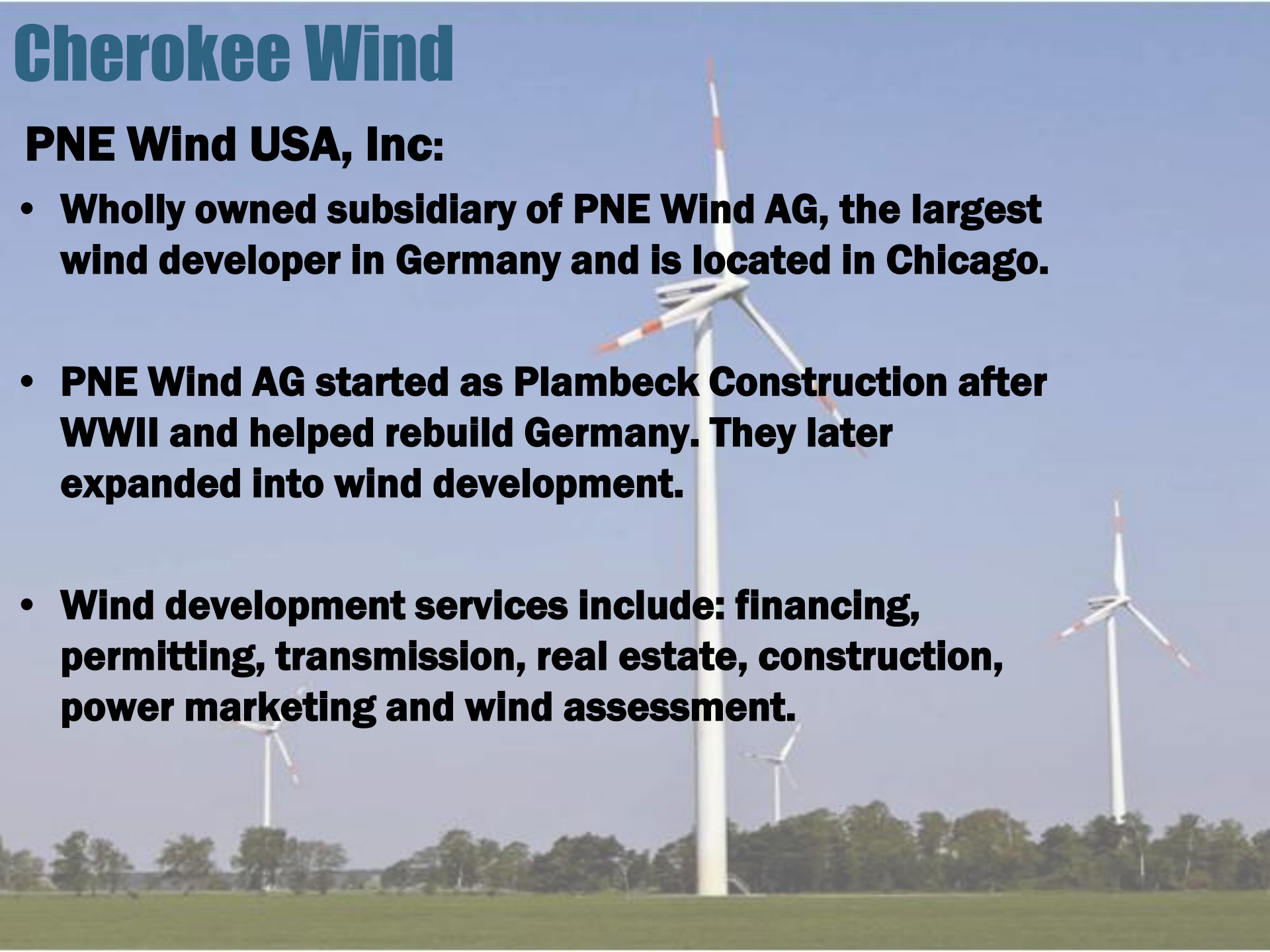
- **CNB first attempted to self develop the wind park.**
- **The cost estimates were too high and the wind speeds were estimated too low.**
- **Accordingly, CNB could not obtain a power purchase agreement at the price they needed to make it profitable.**
- **It was recommended that the project be sold to a developer.**
- **PNE Wind, a notable wind park development company, was selected to evaluate the project.**



# Cherokee Wind

## **PNE Wind USA, Inc:**

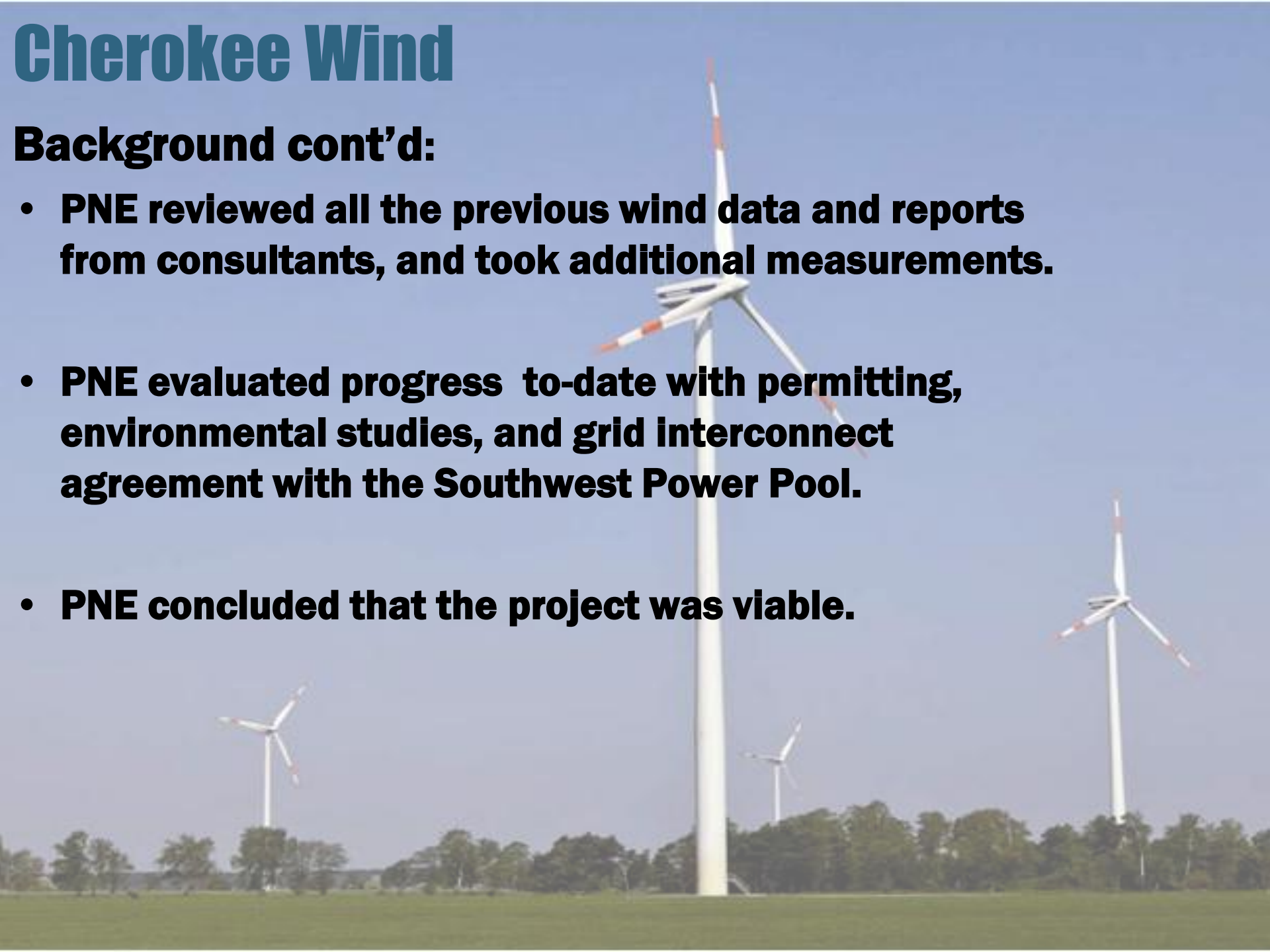
- **Wholly owned subsidiary of PNE Wind AG, the largest wind developer in Germany and is located in Chicago.**
- **PNE Wind AG started as Plambeck Construction after WWII and helped rebuild Germany. They later expanded into wind development.**
- **Wind development services include: financing, permitting, transmission, real estate, construction, power marketing and wind assessment.**



# Cherokee Wind

## Background cont'd:


- **PNE reviewed all the previous wind data and reports from consultants, and took additional measurements.**
- **PNE evaluated progress to-date with permitting, environmental studies, and grid interconnect agreement with the Southwest Power Pool.**
- **PNE concluded that the project was viable.**





# Cherokee Wind

## Remaining Issues to Resolve During 2012 :

- **Land Leases – Cherokee, Kaw/ Apex, BIA approval**
  - **Cherokee Nation to put land into trust**
  - **Finalize PNE/CNB contract**
  - **Finalize power purchase agreement**
  - **Term Sheet**
  - **Final Permitting**
  - **Financial Closing**
  - **Supply Agreements**
  - **Begin Construction**
- 
- A photograph of a wind farm with several white wind turbines in a green field under a clear blue sky. The turbines are spaced out across the landscape, with one large turbine in the foreground and several smaller ones in the background. The sky is a uniform light blue, and the ground is a flat green field.