
EARLY LEARNING FELLOWS KICKOFF MEETING: BUILDING STATE LEADERSHIP



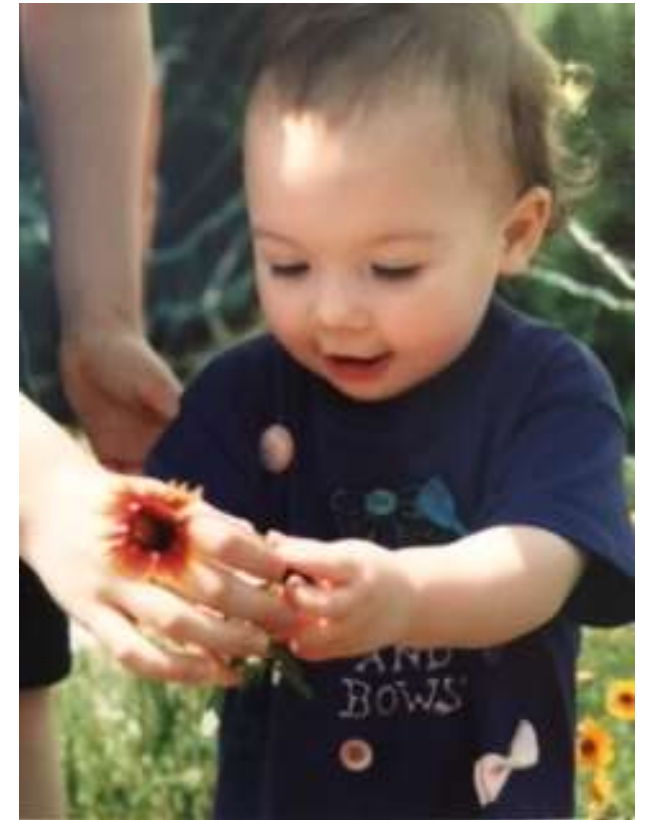
@NCSLORG #EARLYLEARNING #NCSL



NCSL STAFF – EARLY CARE AND EDUCATION PROJECT STAFF



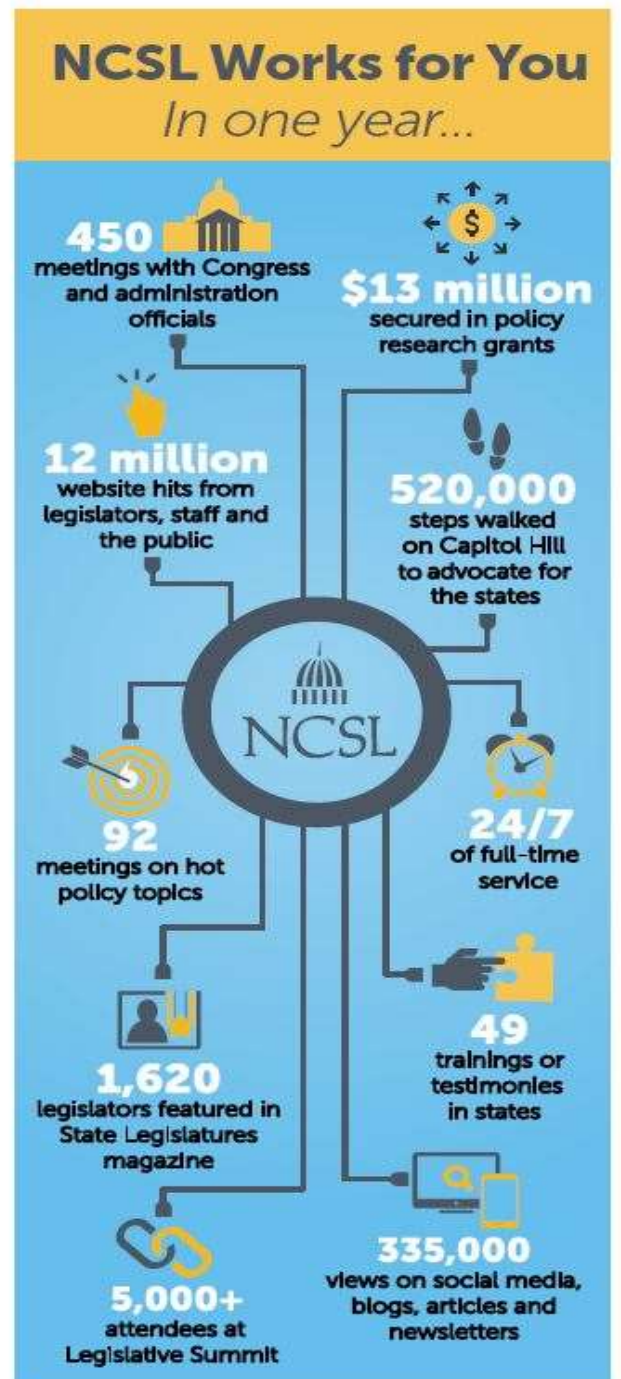
NCSL STAFF – CHILDREN AND FAMILIES AND EDUCATION STAFF



WHO IS NCSL

Bipartisan organization serving legislators and staff in all 50 states and territories:

- Improve the quality and effectiveness of state legislatures
- Provide state legislatures a strong, cohesive voice at the federal level
- Promote policy innovation and communication among state legislatures



A LITTLE ABOUT THIS PROGRAM



Members of the 2011-2018 Early Learning Fellows cohort along with NCSL staff

Overview of the Early Learning Fellows Program

State legislatures play a critical role in supporting and improving early care and education opportunities for their states. Equipped with compelling brain research and strong evidence, and evaluation that high investments are essential to improve access to and quality of early care and education programs that are key to children's development, school readiness and long-term well-being, the Early Learning Fellows program supports this work by convening legislators, legislative staff and executives in the state to learn research, discuss practice models and gain new ideas.

The Early Learning Fellows program is designed to support legislators and legislative staff who are an emerging or existing leaders on early care and education issues. The program also serves these emerging or serving on human services, education or transportation committees who seek to expand their knowledge and learn from other legislators and experts across the country.

NCSL staff conducts a rigorous application process beginning in January each year, leading to the selection of participants in the spring. New members are part of a year-long peer learning community to include their colleagues, learn about other states' efforts to support early learning and hear from leading researchers and policy experts to connect the latest innovations in the room being their state.

NCSL develops programming for each cohort to incorporate new research developments and put its changes to practice. Research content based on current needs and legislative interests. Since 2011, the Fellows curriculum has regularly included sessions and activities on early brain architecture and cognitive development, best practices in home visiting, early literacy and numeracy skills, developing the early childhood workforce and innovative financing strategies. In recent years, participants have also attended one-on-one or observed high-quality early learning programs. Early Learning Fellows are encouraged to network with their legislative peers and share resources, challenges and innovations from their states.

ACKNOWLEDGEMENTS
The Alliance for Early Success has funded the Early Learning Fellows since 2011. Additional funding has come from the Heising-Simons Foundation, the Buffett Early Childhood Fund, the Ed and Mollie Heising-Simons Foundation, the W.K. Kellogg Foundation and others. NCSL is grateful to these organizations for making this possible.

Alumni:

- 189 legislators
- 25 legislative staff

Thanks for our funders:

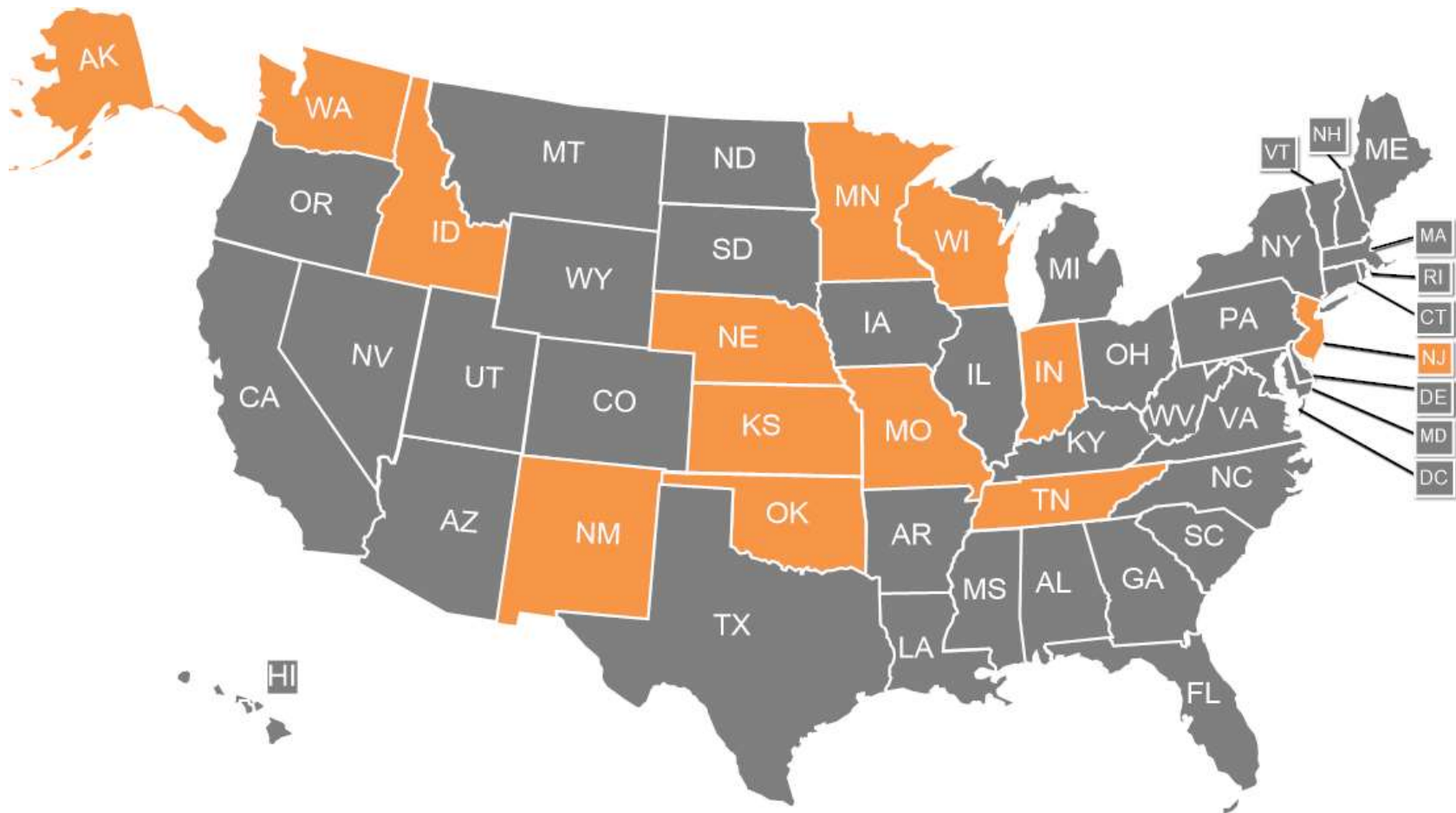
- Alliance for Early Success
- Buffett Early Childhood Fund
- Heising-Simons Foundation
- W.K. Kellogg Foundation



www.ncsl.org/fellows8



2019 NCSL EARLY LEARNING FELLOWS (COHORT 8)

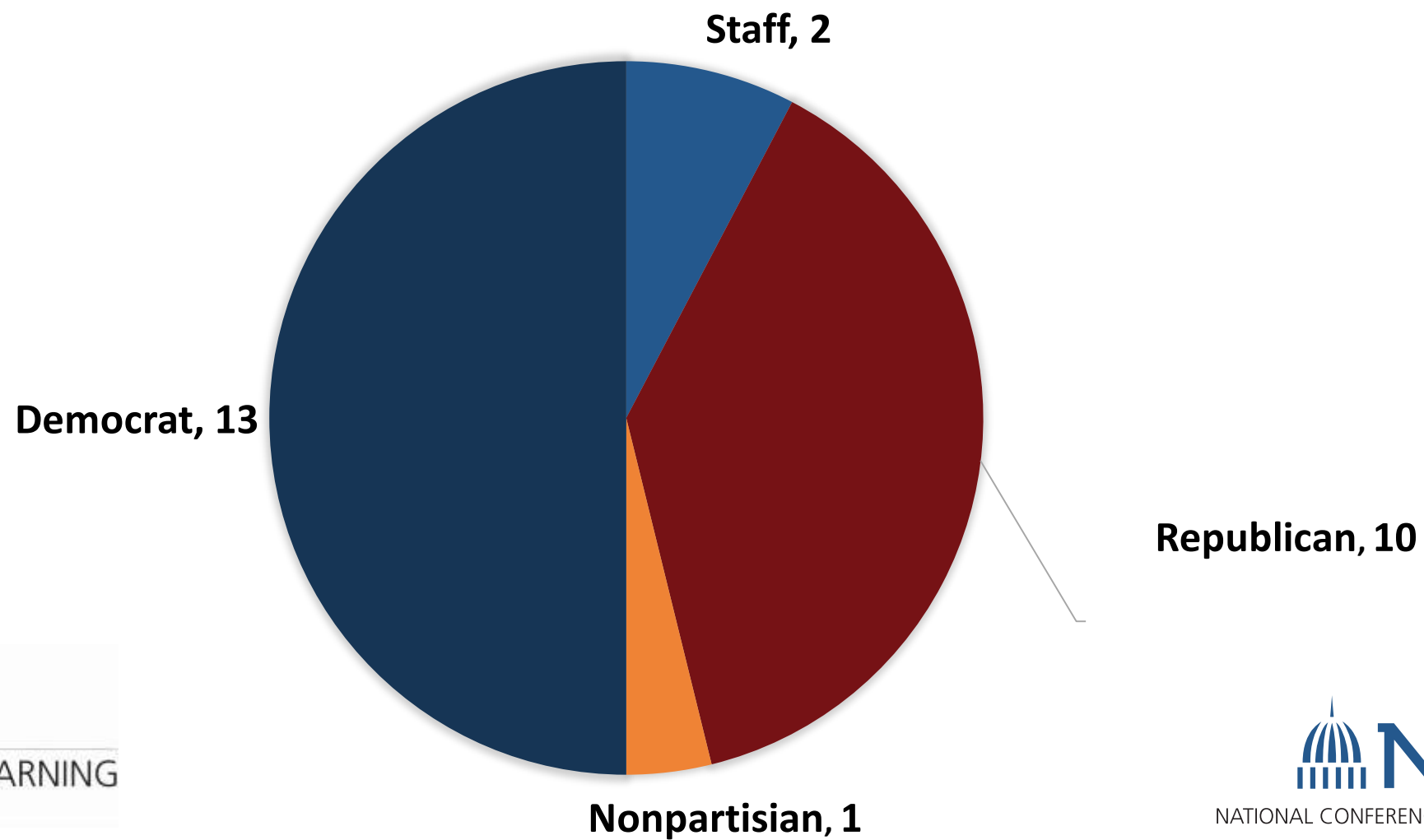


IT'S TIME FOR INTRODUCTIONS

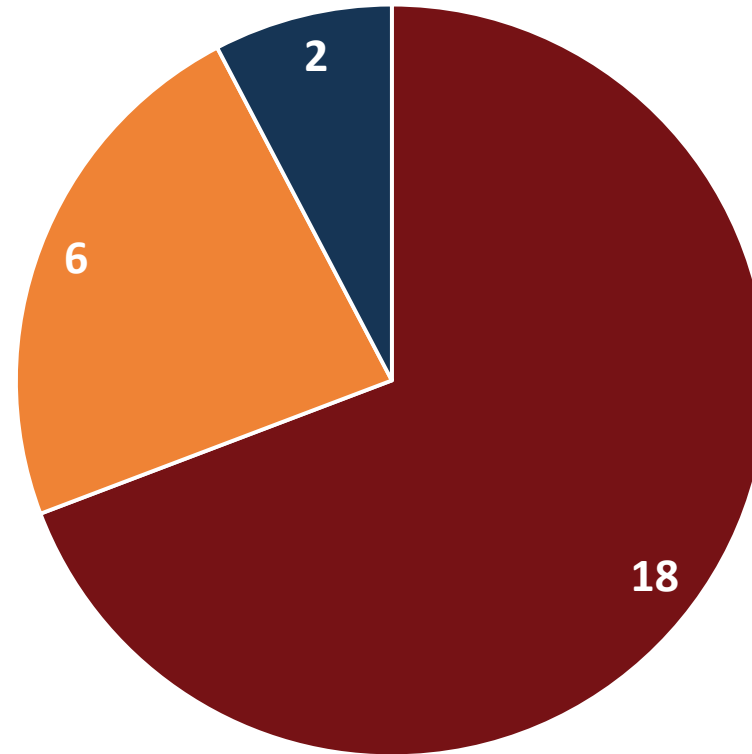
1. Share your name and state.
2. Number of years in the legislature.



PARTY AFFILIATION

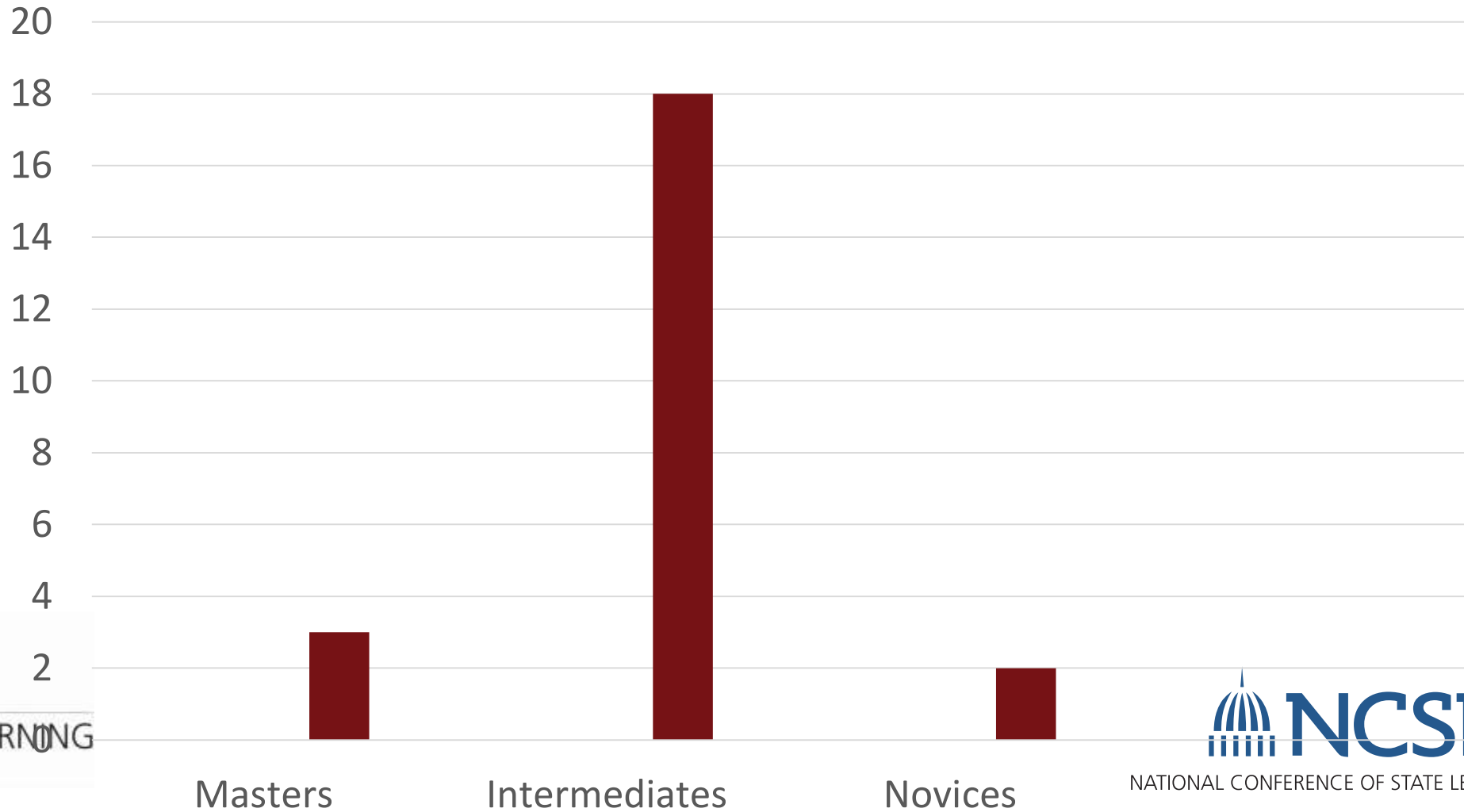


LEGISLATIVE EXPERIENCE

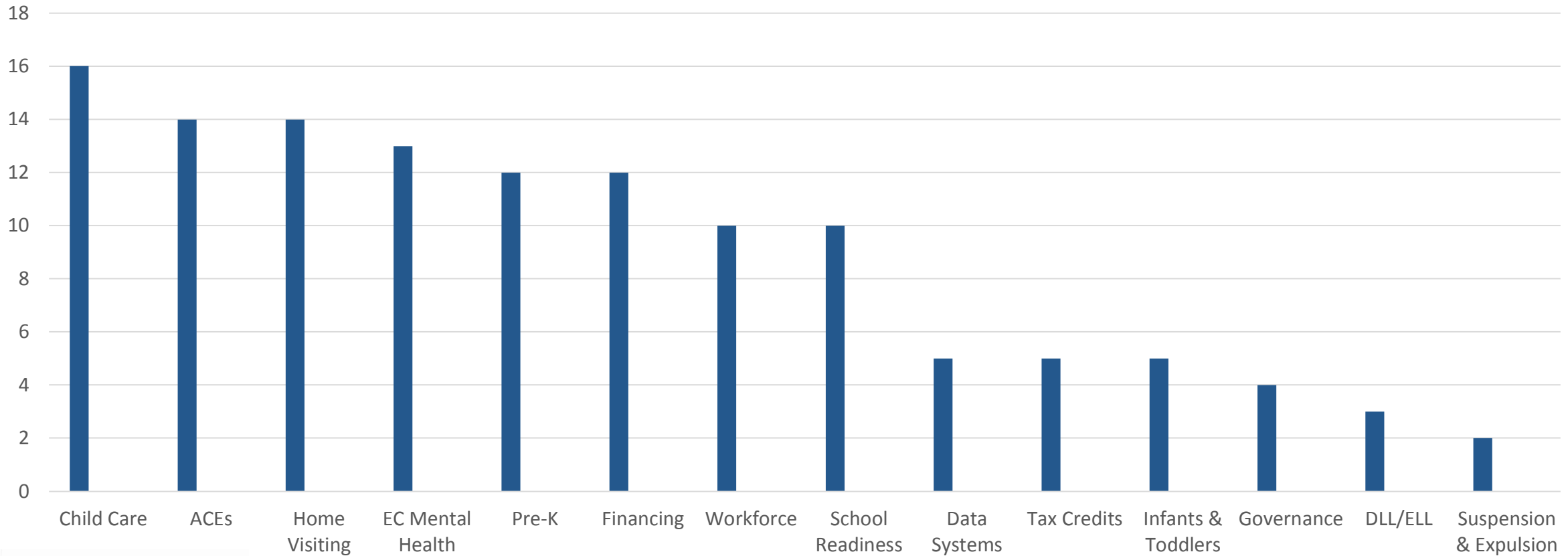


**18 legislators for 0-5 years
6 legislators for 6-10 years
2 legislators for 11+ years**

SELF-RATED KNOWLEDGE



STATE PRIORITIES



WHAT'S IN YOUR FOLDER?!?

NCSL EARLY LEARNING FELLOWS

Weekly and additional:

- 12300 - Communication (Children and Families)
- 12301 - Child Care and Development Block Grant
- 12302 - Child Care and Development Fund
- 12303 - Child Care Licensing and Reform
- 12304 - Child Development Initiative Activities
- 12305 - Child Development Institute
- 12306 - Department of Taxation
- 12307 - Early Childhood Assessment Council (Early WIC) - Strengthening Children's Learning Outcomes
- 12308 - Early Childhood Comprehensive Systems
- 12309 - Early Childhood Education in Early Care and Education
- 12310 - Early Head Start
- 12311 - Early Learning Services
- 12312 - Early Learning Challenge
- 12313 - Early and Periodic Screening, Diagnostic and Treatment
- 12314 - National Accession for Health
- 12315 - Essential Programs and Services
- 12316 - Inclusive Practices
- 12317 - Integrated Child Care
- 12318 - Health and Social Service Administration
- 12319 - Healthy Family Partnership Grants (HFP)
- 12320 - Healthy, Informed and Engaged Care
- 12321 - Head Start Program Quality Improvement
- 12322 - Health Care Financing
- 12323 - Health Care Financing
- 12324 - Health and Early Childhood Education Reform
- 12325 - Individualized Education Program

New Jersey
OFFICE OF EARLY CHILDHOOD DEVELOPMENT

INDICATORS

1. **Child Development Index (CDI)**: A composite of low and high quality indicators that measure children's cognitive, language, and motor skills. CDI scores range from 0 to 100, with higher scores indicating better outcomes. New Jersey's score is consistently high, around 90-95.

2. **Early Childhood Education (ECE)**: The percentage of children aged 3-5 years enrolled in ECE programs. New Jersey has one of the highest rates in the nation, around 85%.

3. **Early Childhood Assessment Council (ECAC)**: A council that monitors and reports on the quality of early childhood education and care. New Jersey's ECAC score is consistently high, around 90-95.

NCSL EARLY LEARNING FELLOWS

June 5-7, 2019 | Omaha, Nebraska

Speaker Biographies

Ellen Fuchs is a developmental psychologist specializing in early childhood education, and currently serves as the lead researcher at the National Institute for Early Education Research (NIEER), serving as a member of the National Research Council of the National Academies of Sciences, Engineering, and Medicine. She is also a member of the National Academy of Education, a trustee of the National Center for Education Policy, and a member of the National Academy of Arts and Sciences. She has published over 100 articles and books on early childhood education and is the author of the book *How Children Succeed*.

NCSL EARLY LEARNING FELLOWS

June 5-7, 2019 | Omaha, Neb

Meeting Evaluation | June 5-7, 2019 | Omaha, Neb

Please help us improve and plan by providing honest feedback on the following questions. Thank you for your time!

State: Alaska Oregon Other (please specify): _____

Role: Legislator Legislative Staff

1. Please provide responses for the following questions for each session. To what extent do you agree or disagree with each of the following activities?

Session	Topic	Strongly Disagree	Disagree	Neutral	Agree	Strongly Agree
Thursday, June 6 (Day 1)	Health, June 6 (Day 1)	<input type="radio"/>	<input type="radio"/>	<input type="radio"/>	<input type="radio"/>	<input type="radio"/>
Friday, June 7 (Day 2)	Health, June 7 (Day 2)	<input type="radio"/>	<input type="radio"/>	<input type="radio"/>	<input type="radio"/>	<input type="radio"/>

NATIONAL CONFERENCE OF STATE LEGISLATURES

MEETING PARTICIPANT EXPENSE REPORT

Participant Name: _____

Session: _____

Travel Destination: _____

Travel Dates: _____

Expenses:

Category	Amount
Travel	_____
Meals	_____
Hotel	_____
Transportation	_____
Other	_____
Total	_____

2018 State Child Care Facts in the State of: Alaska

CHILD CARE REVENUE

Category	2018	2017
Total Revenue	\$1,058,342	\$1,058,342
Children age 0-2 years	\$1,058,342	\$1,058,342
Children age 3-5 years	\$1,058,342	\$1,058,342

CHILD CARE WORKFORCE

Category	2018	2017
Total Workforce	1,058,342	1,058,342
Children age 0-2 years	1,058,342	1,058,342
Children age 3-5 years	1,058,342	1,058,342

NCSL EARLY LEARNING FELLOWS

June 5-7, 2019

Participant List

ID	LEGISLATIVE JURISDICTION	LEGISLATOR	EMAIL
01	Alaska	Alaska Governor	alaska@alaska.gov
02	Alaska	Alaska Legislature	alaska@alaska.gov
03	Alaska	Alaska Legislature	alaska@alaska.gov
04	Alaska	Alaska Legislature	alaska@alaska.gov
05	Alaska	Alaska Legislature	alaska@alaska.gov
06	Alaska	Alaska Legislature	alaska@alaska.gov
07	Alaska	Alaska Legislature	alaska@alaska.gov
08	Alaska	Alaska Legislature	alaska@alaska.gov
09	Alaska	Alaska Legislature	alaska@alaska.gov
10	Alaska	Alaska Legislature	alaska@alaska.gov

BRAIN SCIENCE: HOW EARLY EXPERIENCES SHAPE THE BRAIN



9:15-10:45 a.m. | More than 1 million new neural connections are formed every second in the first few years of a child's life. This interactive session explores the latest research on brain development and how early everyday experiences support children's learning in all domains.

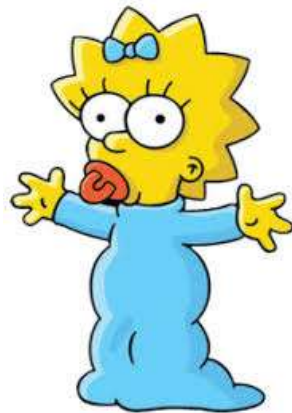
Moderator

- Alison May, NCSL

Speaker

- Sarah Lytle, Institute for Learning & Brain Sciences, University of Washington

EARLY LEARNING PLANNING: THINKING THROUGH YOUR TOP PRIORITIES



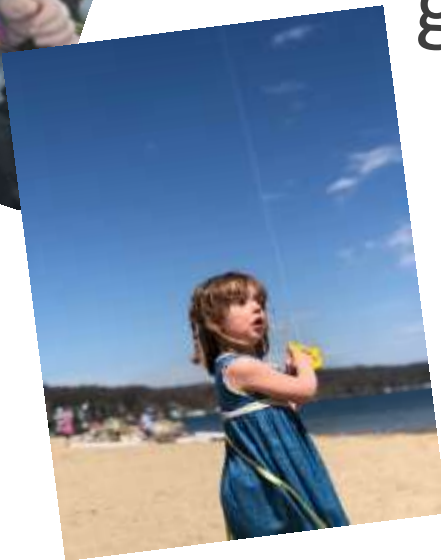
- What did you hear today that interested you?

EARLY LEARNING PLANNING: THINKING THROUGH YOUR TOP PRIORITIES

- What do you want to learn more about?



EARLY LEARNING PLANNING: THINKING THROUGH YOUR TOP PRIORITIES



- What takeaways do you want to share with the group?

