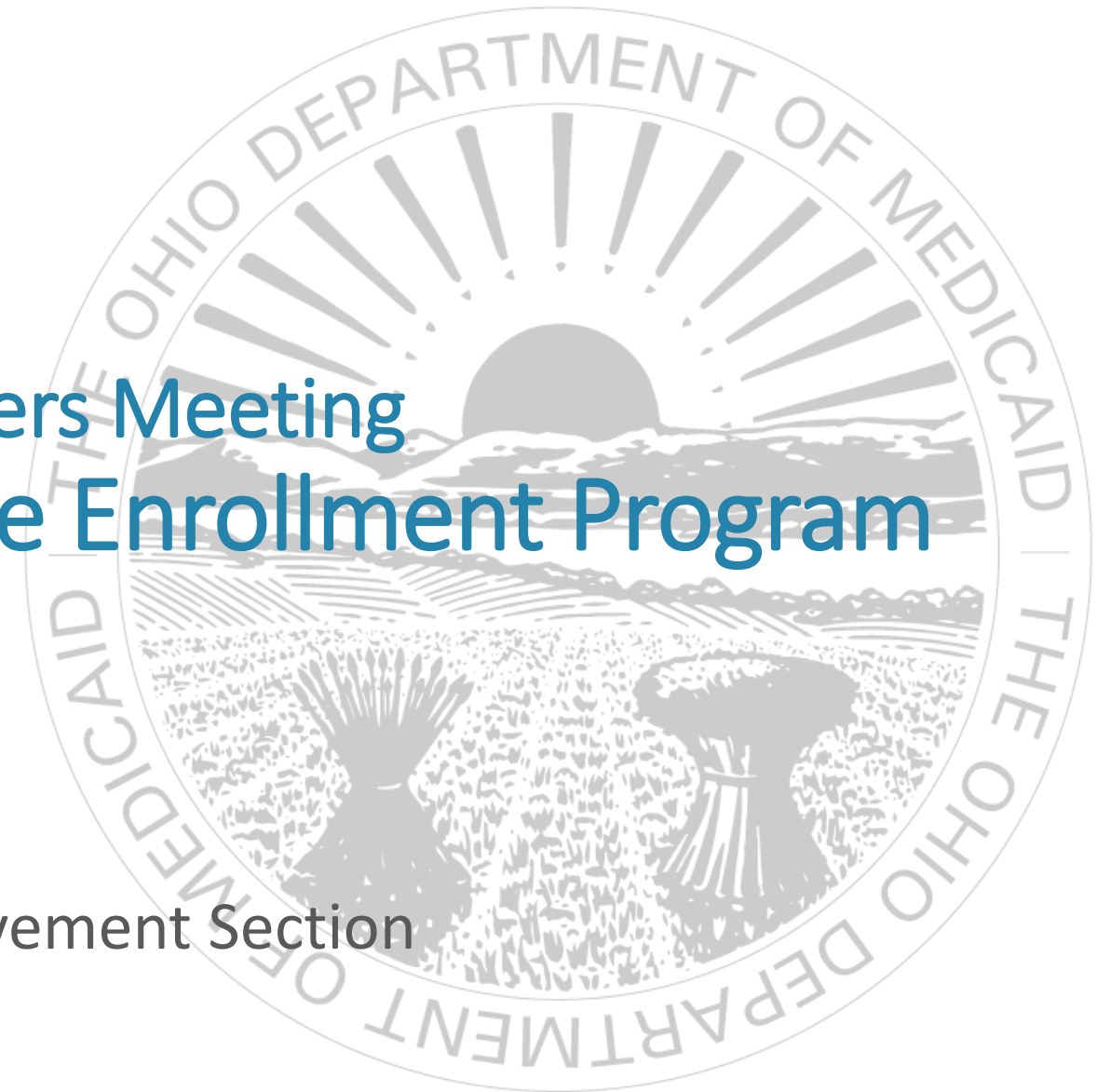


2017 Atlantic States Fiscal Leaders Meeting Ohio Medicaid Pre-Release Enrollment Program

Kara Miller, Chief

Care Management and Quality Improvement Section

February 25, 2017



Making Ohio Better

Ohio Medicaid

- Medicaid is Ohio's largest health payer.
- Over 90,000 hospitals, nursing homes and other providers deliver services for nearly 3 million individuals insured by Medicaid.
- 2014: Extended Medicaid eligibility to Ohioans aged 19-64 at or below 138% FPL.
- 86% of Medicaid consumers are covered by contracted managed care plans available statewide.

Ohio's Inmate Population

- 27 institutions located across the state
- There are currently over 50,000 inmates
 - » 91.6% male, 8.4% female
 - » Average age: 37 years male, 36 years female
 - » Average stay in prison: 2.3 years
 - » 18% of inmates are over 50 years of age
- High prevalence of chronic care, mental health issues, and history of drug/alcohol addiction

Sources: ODRC Fact Sheet, February 2017. <http://www.drc.ohio.gov/Portals/0/Reentry/Reports/Monthly/2017/Feb%202017%20Fact%20Sheet.pdf?ver=2017-02-15-150241-993>

Medicaid Pre-Release Enrollment Program

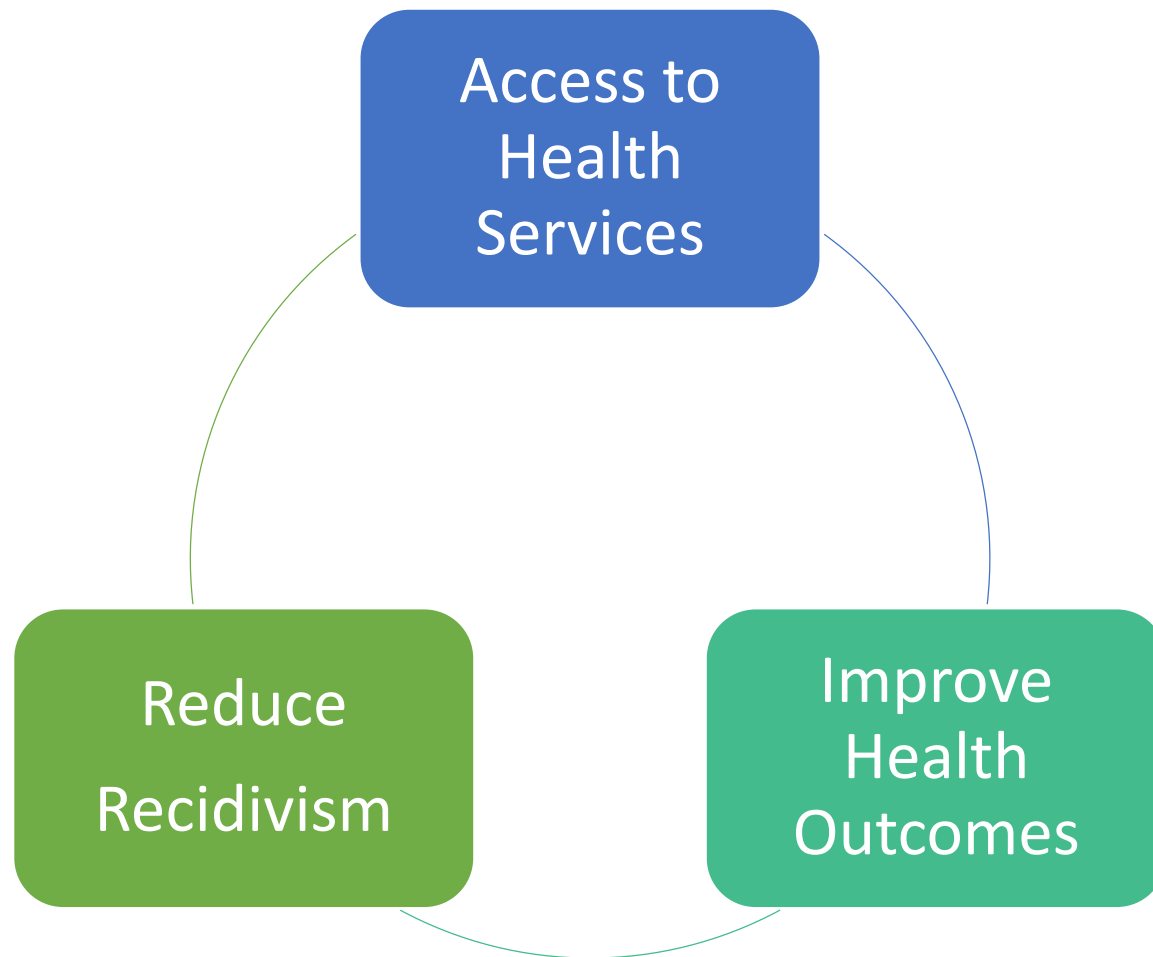


Program Partners:

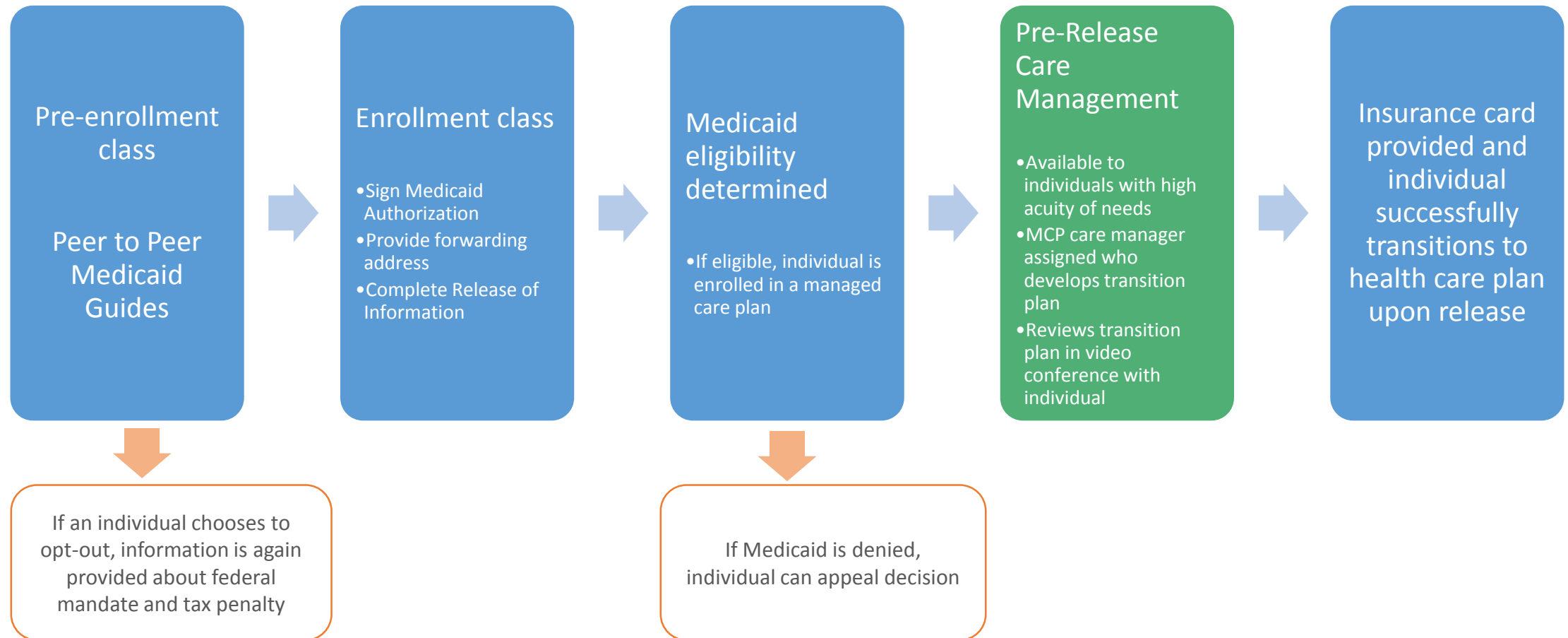
- » Ohio Department of Rehabilitation and Corrections (ODRC) and Ohio Department of Medicaid (ODM)
- » Ohio Mental Health and Addiction Services (OhioMHAS) and Ohio Department of Health (ODH)
- » Medicaid Managed Care Plans
- » Medicaid Consumer Hotline



Pre-Release Program Goals



Pre-Release Program: Process Overview



Care Management: Who is Eligible?

»Mental Illness

»Substance Abuse

»Chronic Condition

Must meet two or more to qualify

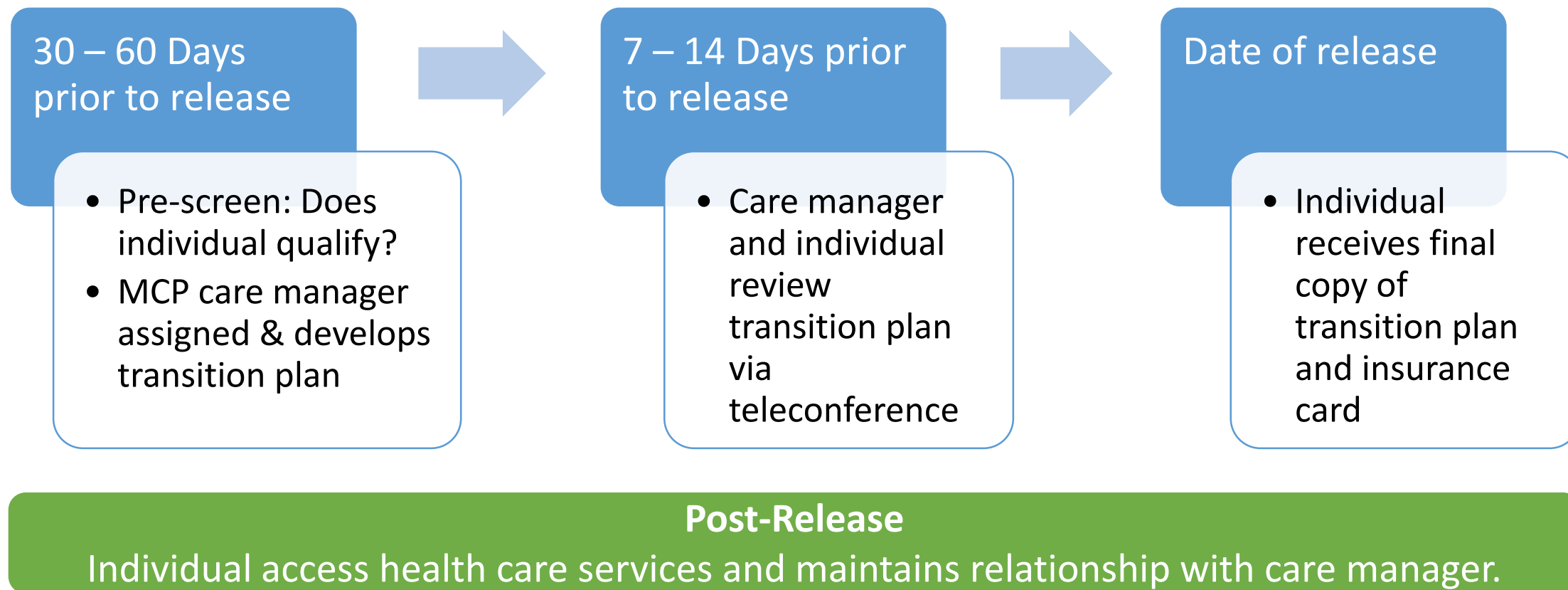
»HIV Positive

»Hepatitis C

»Pregnancy

Qualify automatically

Care Management: Transition to the Community



Accomplishments

- Trained 150 Peer to Peer Medicaid Guides
- Approximately 10,000 individuals able to access Medicaid benefits on day of release
- Approximately 1,500 individuals received transition assistance from an MCP care manager prior to release.

What's to Come

- Robust program evaluation underway
 - » Evaluate short- & long-term impact on program participants
 - » Trend over time and compare with other Medicaid cohorts (Group VIII, ABD, CFC)
- Exploring opportunities presented in April 2016 SMD letter and partnership expansion opportunities

Keys to Success

- Strong interagency partnerships with director level leadership
- Program design aligned with staffing and technology resources
- Piloting program with a slow ramp up was essential
- Strong communication across agencies and partners with ability to be agile

Questions?

Contact: Kara Miller
Chief, Care Management and Quality Improvement
The Ohio Department of Medicaid
Kara.Miller@Medicaid.Ohio.Gov
614-752-4826



MAKING OHIO BETTER

