



U.S. DEPARTMENT OF  
**ENERGY**

OFFICE OF  
**ENVIRONMENTAL  
MANAGEMENT**

# EM Transportation Update

---

**Demitrous Blount/Ellen Edge/Joe Martinez**

*Office of Packaging and Transportation*

Office of Environmental Management

**Mid-Year Meeting**

**Tribal Radioactive Materials Transportation Committee**

- Environmental Management Cleanup
  - Budget
  - 120 Day Initiatives
  - High Level Waste Interpretation
- Organization of the Office of Environmental Management
  - Current Structure
- Shipping Maps
- Update on the Office of Packaging and Transportation
  - Mission
  - Activities



U.S. DEPARTMENT OF  
**ENERGY**

OFFICE OF  
**ENVIRONMENTAL  
MANAGEMENT**

# Environmental Management Cleanup

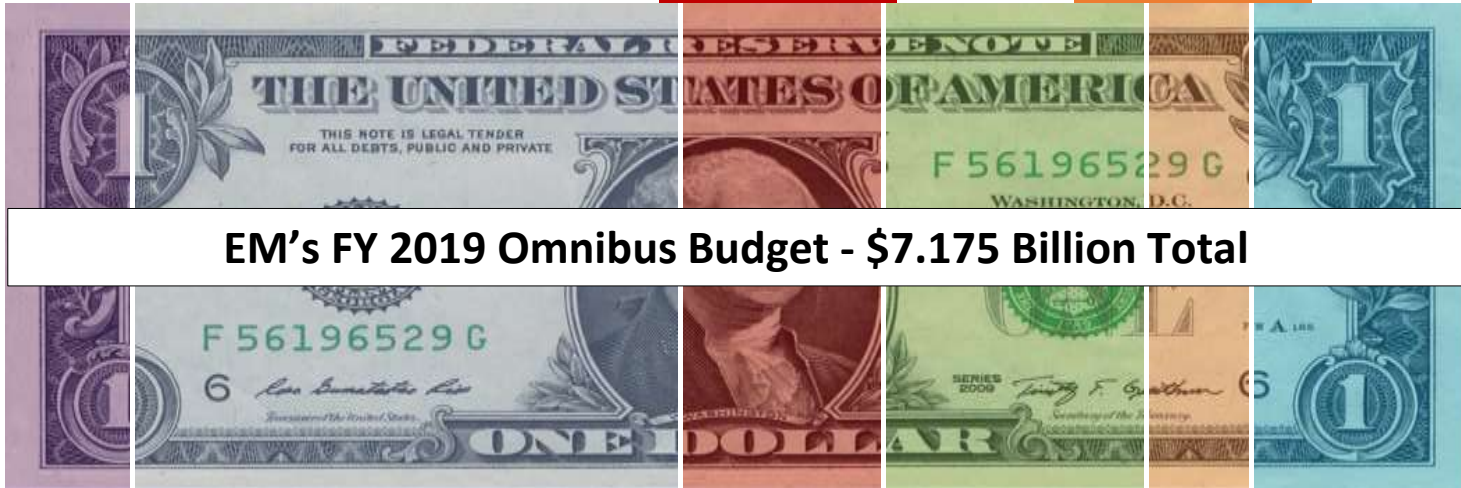
---

## EM Mission Areas

Special Nuclear Materials & Spent Nuclear Fuel  
\$ 573M / 8%

TRU & Solid Waste  
\$ 987M / 14%

Soil & Groundwater  
\$ 461M / 6%



**EM's FY 2019 Omnibus Budget - \$7.175 Billion Total**

Radioactive Tank Waste  
\$ 2,621M / 37%

Facility D&D  
\$ 1,476M / 21%

Site Services  
\$ 1,057M / 14%

EM Sites								FY 19 Omnibus (\$M)
Savannah River	✓	✓	✓	✓	✓	✓	✓	1,551
River Protection		✓						1,573
Richland	✓		✓	✓	✓	✓	✓	954
Idaho	✓	✓		✓		✓	✓	443
Oak Ridge	✓		✓	✓	✓		✓	646
Portsmouth	✓			✓			✓	476
Paducah	✓			✓			✓	274
Carlsbad			✓				✓	404
Los Alamos			✓			✓	✓	220
West Valley			✓	✓			✓	78
All Others			✓	✓	✓	✓	✓	556

- Implement End State Contracting to enable and drive the accelerated completion of work
- Examine the use of risk-based definitions for our waste to potentially allow us to strategically maximize the use of existing licensed disposal facilities and accelerate moving waste into permanent disposal facilities
- Re-energize deactivation & decommissioning efforts to safely tear down aging infrastructure and reduce lifecycle costs
- Align our regulatory agreements and commitments to ensure attainable outcomes that are tied to a risk-based analysis and future land use
- Advocate for changes to targeted orders and regulations to streamline and enable success
- Ensure ongoing excellence in our workforce through succession planning and retention of institutional knowledge and critical skill sets

- On October 10, DOE issued for public comment in the Federal Register its interpretation of the definition of HLW.
- Initial 60-day comment period was extended to January 9, 2019.
- DOE wants to get the policy right and is requesting public comment.
- DOE has not made any decisions on the waste classification or disposal options in any state or locality.
- We welcome and greatly encourage comments from the public, Regulators, state and local officials, and all other stakeholders.

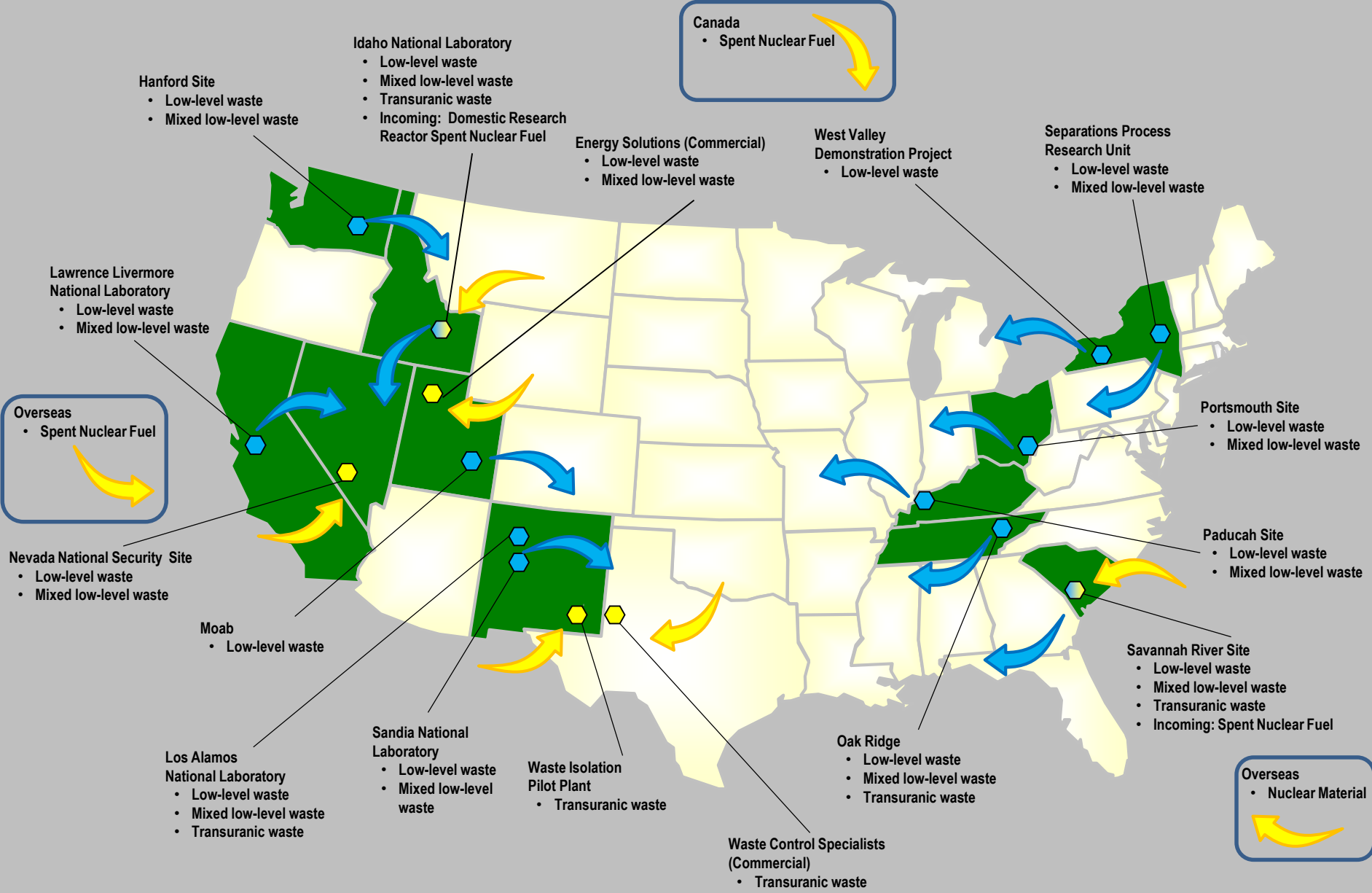


U.S. DEPARTMENT OF  
**ENERGY**

OFFICE OF  
**ENVIRONMENTAL  
MANAGEMENT**

# Shipping Maps

---

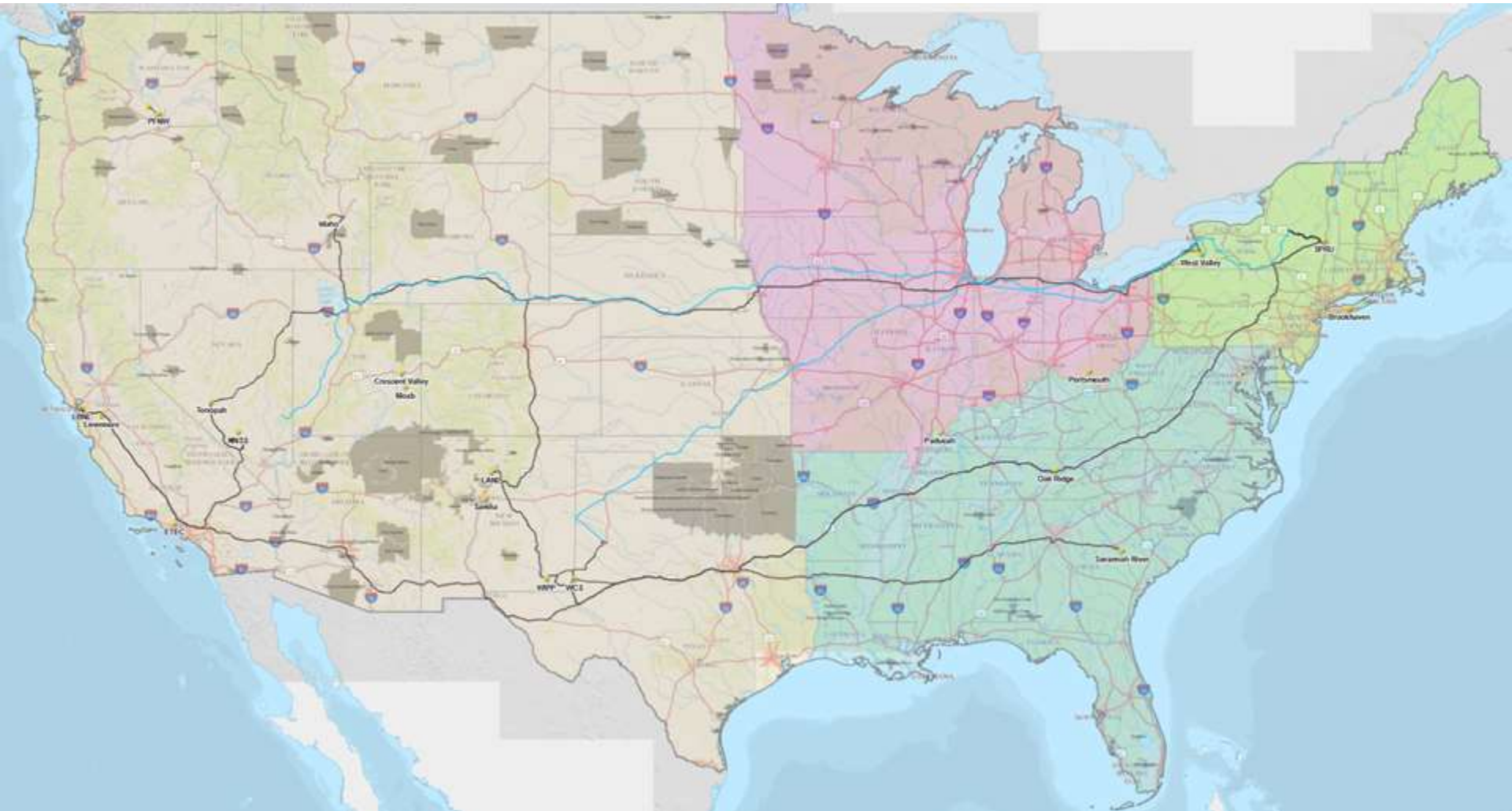


- Incoming shipments
- Outgoing shipments
- Incoming & outgoing shipments

Note: Direction of arrow denotes incoming vs outgoing, not direction of actual shipments.



# Possible Shipping Routes





U.S. DEPARTMENT OF  
**ENERGY**

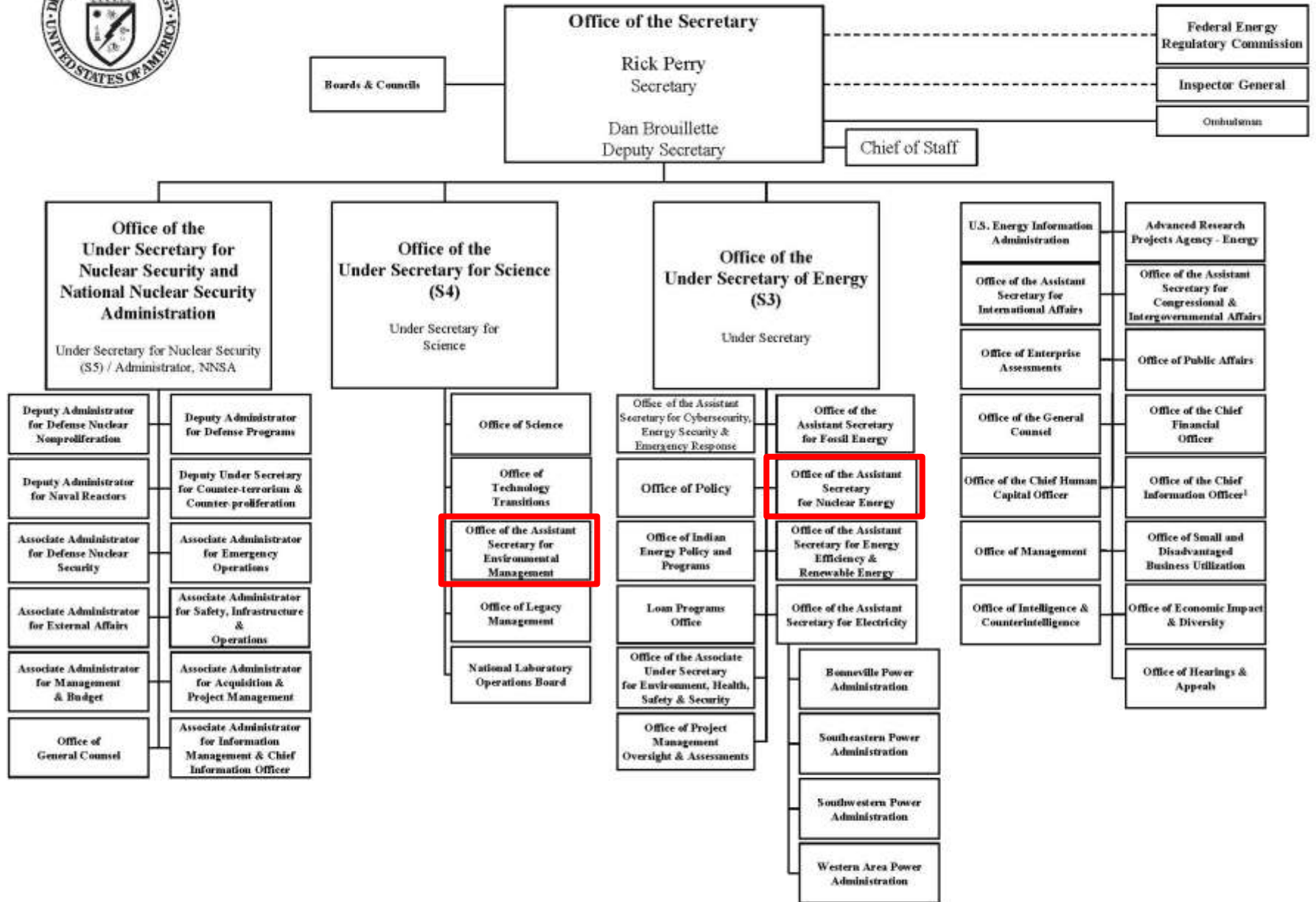
OFFICE OF  
**ENVIRONMENTAL  
MANAGEMENT**

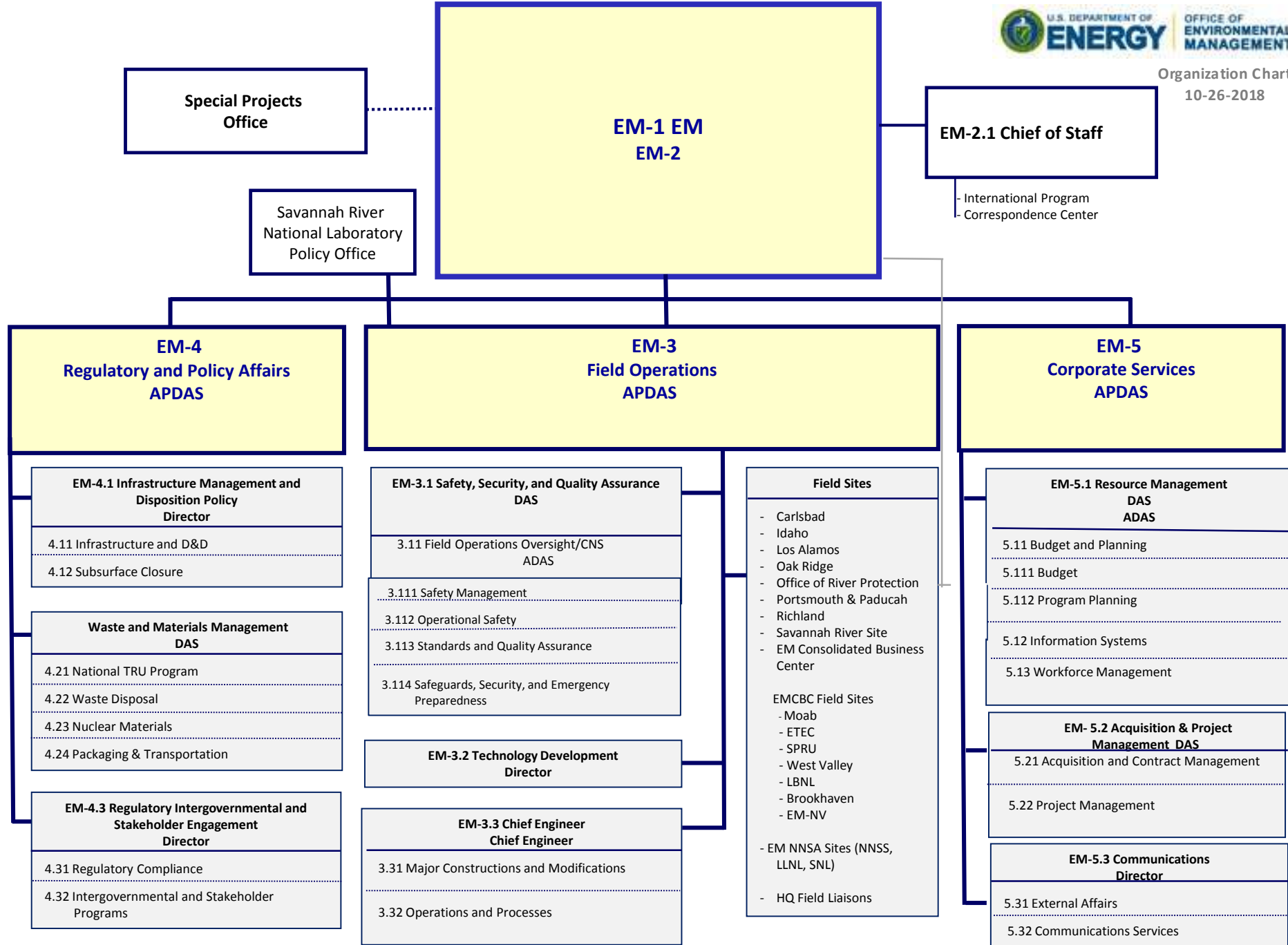
# EM Organization

---



# DEPARTMENT OF ENERGY





**Special Projects Office**

**EM-1 EM EM-2**

**EM-2.1 Chief of Staff**

- International Program
- Correspondence Center

Savannah River National Laboratory Policy Office

**EM-4 Regulatory and Policy Affairs APDAS**

**EM-4.1 Infrastructure Management and Disposition Policy Director**

4.11 Infrastructure and D&D

4.12 Subsurface Closure

**Waste and Materials Management DAS**

4.21 National TRU Program

4.22 Waste Disposal

4.23 Nuclear Materials

4.24 Packaging & Transportation

**EM-4.3 Regulatory Intergovernmental and Stakeholder Engagement Director**

4.31 Regulatory Compliance

4.32 Intergovernmental and Stakeholder Programs

**EM-3 Field Operations APDAS**

**EM-3.1 Safety, Security, and Quality Assurance DAS**

3.11 Field Operations Oversight/CNS ADAS

3.111 Safety Management

3.112 Operational Safety

3.113 Standards and Quality Assurance

3.114 Safeguards, Security, and Emergency Preparedness

**EM-3.2 Technology Development Director**

**EM-3.3 Chief Engineer Chief Engineer**

3.31 Major Constructions and Modifications

3.32 Operations and Processes

**Field Sites**

- Carlsbad
- Idaho
- Los Alamos
- Oak Ridge
- Office of River Protection
- Portsmouth & Paducah
- Richland
- Savannah River Site
- EM Consolidated Business Center

EMCBC Field Sites

- Moab
- ETEC
- SPRU
- West Valley
- LBNL
- Brookhaven
- EM-NV

- EM NNSA Sites (NNS, LLNL, SNL)
- HQ Field Liaisons

**EM-5 Corporate Services APDAS**

**EM-5.1 Resource Management DAS ADAS**

5.11 Budget and Planning

5.111 Budget

5.112 Program Planning

5.12 Information Systems

5.13 Workforce Management

**EM-5.2 Acquisition & Project Management DAS**

5.21 Acquisition and Contract Management

5.22 Project Management

**EM-5.3 Communications Director**

5.31 External Affairs

5.32 Communications Services



U.S. DEPARTMENT OF  
**ENERGY**

OFFICE OF  
**ENVIRONMENTAL  
MANAGEMENT**

# Update on the Office of Packaging and Transportation

---

# Our Mission

The Office of Packaging and Transportation protects people and the environment by ensuring safe, compliant, and efficient packaging and transportation of materials critical to successful Department operations. We achieve this mission by conducting packaging and transportation assessments and oversight; assisting field sites; and developing, managing, and advocating policies, orders, guidance and tools in accordance with DOE requirements and government regulations.



# Update on Order Revision

## Regulations and Standards

### DOE Order 460.2A Revision Update:

- Integrated Project Team (IPT) conducted an extensive review of the Radioactive Material Transportation Practices Manual.
- Subgroups completed reviews; will provide recommendations to IPT co-chair.
- Assemble writing team
- Review and comment process will be used IAW DOE Order 251.1D.
  - Public review period will commence after writing team finishes its work.

## Outreach & Emergency Preparedness

### Annual Meeting June 10-13, 2019:

- Westin – Crystal City, VA
- TRMTC Co-hosting with DOE
- Save the Date notification sent January 17
- Agenda team developing session topics
- Meeting Theme: “Past Successes, Future Challenges”

### Planning Committee:

- Finalizing Charter and Management Plan
- Restarted Rail/Routing Adhoc Working Group



# Transportation Emergency Preparedness Program

## Outreach & Emergency Preparedness

- Website re-design
- New TEPP Working Group with NTSF
- Tribal training
- National Radiological Training Coordination Group



# TEPP: FY2018 Training Activities

Region	# Classes	TTT	Full	CMERRTT	Partial	TMERRTT	RAD Specialist	Hospital	Total
WGA	55	9	300	359	56	72	0	57	853
SSEB	76	81	303	319	75	342	32	0	1152
MWCSG	10	25	76	32	14	0	0	0	147
NECSG	19	20	134	68	2	37	0	42	303
<b>Total</b>	<b>160</b>	<b>135</b>	<b>813</b>	<b>778</b>	<b>147</b>	<b>451</b>	<b>32</b>	<b>99</b>	<b>2455</b>

# Contact for Additional Information

Joanne Lorence, Director & NTSF Chair  
EM-4.24/FORS  
Office of Packaging and Transportation  
U.S. Department of Energy  
1000 Independence Avenue, S.W.  
Washington, DC 20585  
Email: [joanne.lorence@em.doe.gov](mailto:joanne.lorence@em.doe.gov)

Ellen Edge, TEPP Program Manager  
EM-4.24/270CC  
Office of Transportation and Packaging  
U.S. Department of Energy  
1000 Independence Avenue, S.W.  
Washington, DC 20585  
Email: [ellen.edge@em.doe.gov](mailto:ellen.edge@em.doe.gov)

Demitrous Blount, NTSF Program Lead  
EM-4.24/270CC  
Office of Transportation and Packaging  
U.S. Department of Energy  
1000 Independence Avenue, S.W.  
Washington, DC 20585  
Email: [demitrous.blount@em.doe.gov](mailto:demitrous.blount@em.doe.gov)

