



Photo courtesy of the Grand Ronde Canoe Family



DOE & Indian Country Energy & Infrastructure Working Group

Quarterly Meeting

June 23, 2016

Portland, Oregon

Embassy Suites - Portland Airport

Welcome to Portland, Oregon & Pacific Northwest



Home of one of the NW's first key centers of historic

- Indigenous trade & commerce
- Intertribal Village site
- Wrestling, PIR, Indy/Grunge Rock, Alt Rock, and all season outdoor enthusiasts
- And more than coffee, beer, chefs, Voodoo Donuts, Portlandia, Grimm, and hipsters but really a place of opportunity...



About ATNI



AFFILIATED TRIBES OF NORTHWEST INDIANS

ATNI is a nonprofit organization representing 50-plus Northwest tribal governments from Oregon, Idaho, Washington, southeast Alaska, Northern California, Nevada, and Western Montana. ATNI is an organization whose foundation is comprised of the people it is meant to serve, Indian peoples. ATNI is a 501(c)(3) non-profit organization headquartered in Portland, Oregon.

ATNI ENERGY & TELECOMMUNICATIONS COMMITTEE

- Formerly the ATNI Economic Development: Utilities Sub-Committee and housed in the ATNI Economic Development Corporation.
- In 2009, the ATNI Executive Board elevated the Sub-Committee to Full Committee.
- Today, the Energy & Telecommunication Committee is a stand alone subject matter policy committee Co-Chaired by Andrea Alexander (Makah) and Randell Harris (Quinault)

ATNI Energy Program

- ATNI established the Energy Program 15+ years ago to provide technical assistance to member tribes and track tribal energy policy
- ATNI has maintained a collaborative working relationship with Bonneville Power Administration on Transmission and Power issues in the Northwest
- Beginning in 2009, ATNI pursued a broader effort to elevate tribal energy capacity building among tribal leaders and tribal professional staff
- Through these efforts ATNI has supported its member tribes with development of a regional tribal energy policy platform, participation in legislative process related to tribal energy, participated in the regional process at BPA, such as the Regional Dialogue Process and Tier Rates Methodology Rate Case
- ATNI continues to participate in many federal, state, and tribal policy forums
- Recently ATNI established a regional information library and published the First NW Tribal Energy Desk Guide, Winter 2014.

• ATNI Headquarters

- ATNI oversees a broad array of policy issues on all issue sets, from healthcare, veterans, natural resources, economic development, transportation, taxation, to energy and telecommunications
- Get our program guidance and direction from the ATNI members and specific year guidance from the ATNI Executive Board

• ATNI Energy Program

- Currently, the ATNI Energy Program focus is solely on transmission planning actions and coordination with Columbia Grid and Energy Policy. Federal Partners include Bonneville Power Administration and the Bureau of Indian Affairs, NW Region.
- Columbia Grid is a non-profit member corporation formed to improve operation, reliability, and expansion of the NW transmission system.

• ATNI Partners and Network

- Linkage to centers of expertise by location, by areas of study, resources, and long-term relationships to the energy sector. We have cultivated partnerships with non-profit allies, colleges/universities in the PNW, and with our utility partners (most recently).

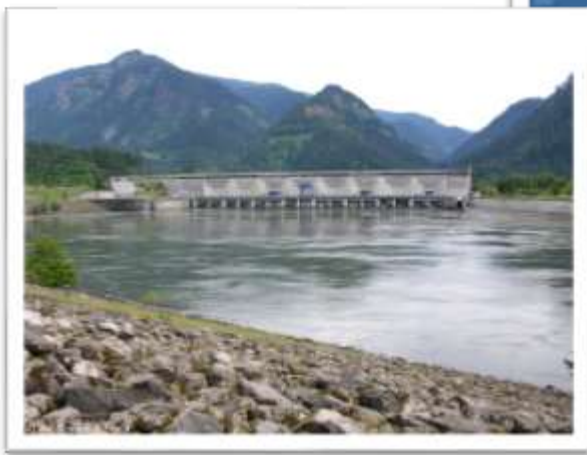
• ATNI



• Capacity Building for the Future



About ATNI Energy



• Transmission Planning

- BPA Transmission Services support from NW Tribal participation in regional and sub-regional transmission planning efforts
- Collaboration and coordination with Columbia Grid.
- Support to member tribes on their own participation and nomination to national forums, such as ICEIWG and the WECC \ TEPPC | SPSG Tribal Representative position

• Tribal Energy Policy Support

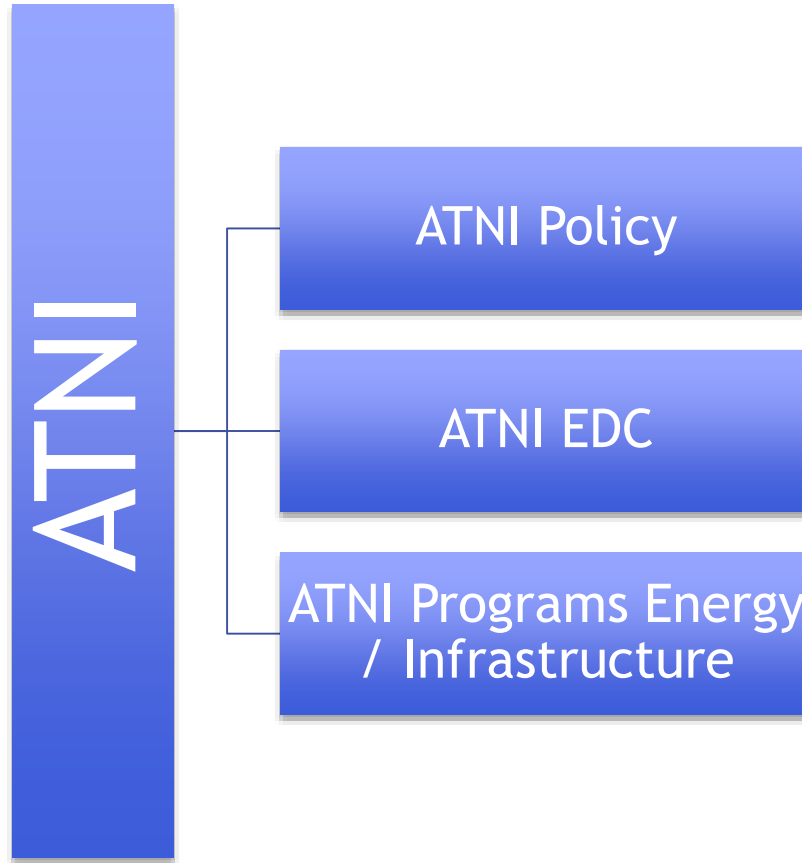
- Coordinate tribal energy policy via the ATNI policy structure, including resolutions of support from ATNI
- Support ATNI policy through national processes and forums, including NCAI
- Develop tribal energy policy platforms at the federal, regional, and sometimes state levels for ATNI members.

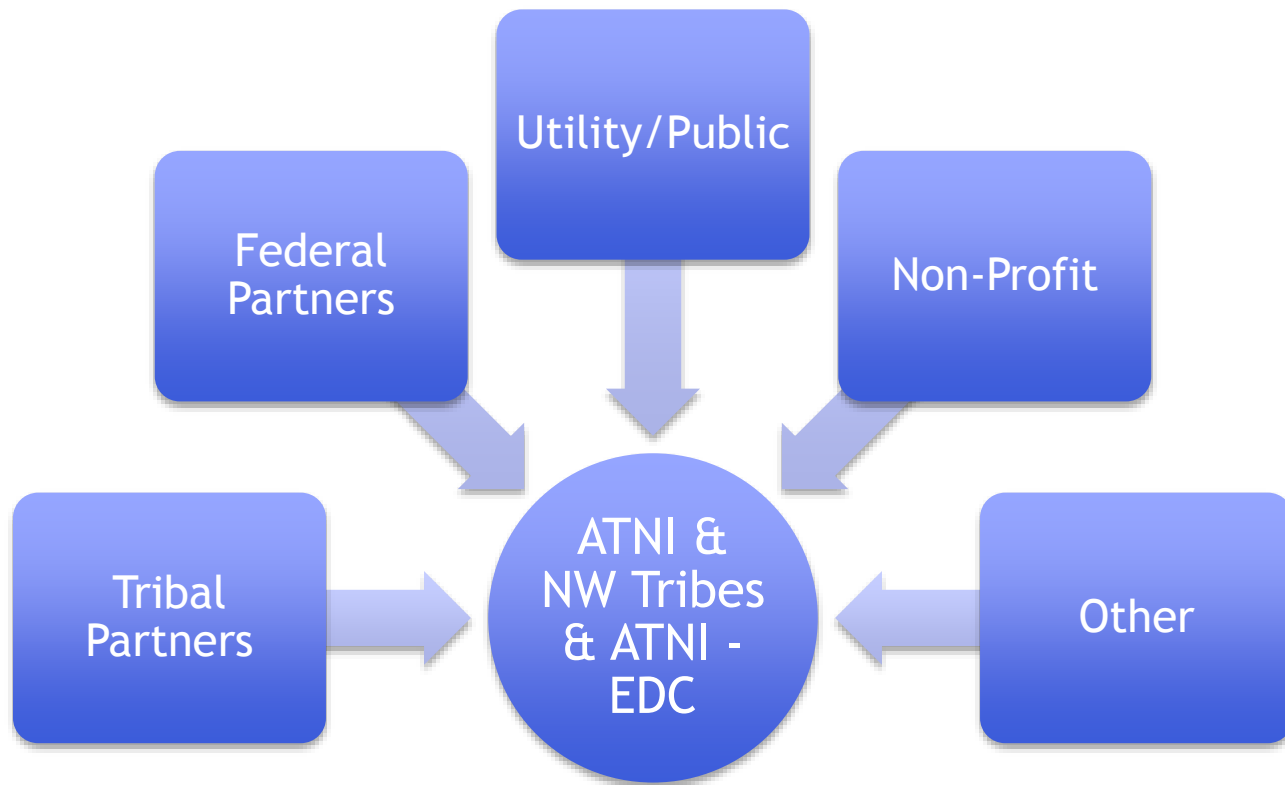
• Capacity Building: Policy, Organizations, and Community

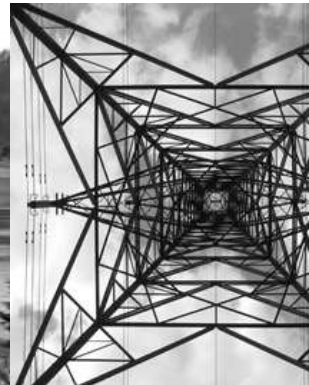
- Provide energy information to tribal leaders on energy industry and policy issues
- Provide training and technical assistance to NW tribes regarding utility issues, energy project development, and community-scale projects
- Facilitate linkages between member tribes and enhancement opportunities, C-NET is the ideal forum to facilitating such programming for ATNI member tribes.

• Environment, Conservation & Economic Development

- Energy issues overlap into our member tribes environmental, natural resources, and sustainability sectors, so we assist in tracking actions and policy in these issue veins.
- Facilitate helpful linkages between energy efficiency and conservation programming with the utilities, industry, and states
- Support tribes in their efforts to develop energy business in the EEC sector







Thank you

ATNI CONTACTS

DIRELLE CALICA 971.255.1404 OR dcalica@atnitrines.org

