



Energy Keepers, Inc.

General Overview
September, 2015



Salish Kootenai Dam
is located on a
significant sight from
cultural, religious,
and resource
perspectives



Lower Flathead
River Before Salish
Kootenai Dam

CSKT

Our People



- The Tribal confederacy is comprised of the Bitterroot Salish, the Pend d'Oreille, and the Kootenai Tribes.
- Historically, the three tribes were allies with ancestors who shared territory in areas now known as western Montana, parts of Idaho, British Columbia, and Wyoming.
- Presently, there are approximately 9,000 Tribal members.



CSKT

Our Resources



- The Tribes preserved the Flathead Indian Reservation as a permanent homeland for Tribal people by the terms of the Hellgate Treaty of 1855.
- The Reservation is 1.317 million acres in size. Although the Reservation was opened to non-Indian settlement as a result of historic federal policies, CSKT has diligently protected its ownership interests and diligently pursued reacquisition of federally-divested interests so that CSKT now owns over 70% of Reservation lands including the bed and banks of the south half of Flathead Lake.
- The Reservation is located in the mountains and valleys of Northwest Montana in the upper Columbia River Basin.
- The Salish Kootenai Plant is located on CSKT-owned land on and adjacent to the Flathead River six miles downstream from Flathead Lake.



Reacquiring CSKT Assets Since 1934

Our Government and Businesses



- The Hellgate Treaty establishes the Tribes as a sovereign entity and formalizes our government-to-government relationship with the United States.
- The Tribal government was established in 1934 pursuant to the terms of the Indian Reorganization Act; CSKT is a constitutional government governed by a popularly-elected ten-member Tribal Council.



- CSKT administers 30 government agencies with a collective annual budget of approximately \$146.3 million and employs approximately 1,200 government workers.
- CSKT owns six for-profit businesses engaged in banking, electronics manufacturing, information technology, engineering, aerospace, environmental restoration, gaming, and hotel/hospitality services.
- CSKT operates Mission Valley Power, a federally-owned electrical utility, serving approximately 22,000 customers, located on the reservation, with annual revenue of approximately \$23.8 million.

Kerr Dam to Salish Kootenai Dam



- **The Kerr Project was developed as result federal assimilation polices implemented on the Flathead Indian Reservation from 1908-1934**
 - Allotting of the land
 - Creation of the Flathead Indian Irrigation Project (irrigation and power)
 - Development of power sites by non-Indian business entities

- **1921** Applications are filed for licenses to develop five power sites on the Flathead River within the Flathead Reservation.
- **1930** The Federal Power Commission issued the first 50-year license to the Rocky Mountain Power Company for the Kerr Dam site.
- **1939** Rocky Mountain Power Company transferred its interest in the License to the Montana Power Company ("MPC"). Kerr Dam began producing power.
- **1976** CSKT filed a competing application with the Federal Energy Regulatory Commission ("FERC") for relicensure of Kerr .
- **1980** The first license expired and FERC issued a series of one-year licenses to MPC.
- **1985** the Tribes successfully negotiate co-licensee status with the MPC and the option to acquire Kerr as the sole owner in 2015. New License issued to MPC and CSKT for a 50-year term through 2035.
- **1999** PPL Montana (PPLM") acquires Kerr from MPC and FERC transfers MPC's License interest to PPLM.
- **2014** NWEAC acquires Kerr from PPLM and FERC transfers PPLM's License interest to NWEAC
- **2015** CSKT exercises its exclusive and unilateral right to acquire Kerr through Energy Keepers Inc. and proceed to change the name to Salish Kootenai Dam

Salish Kootenai Dam



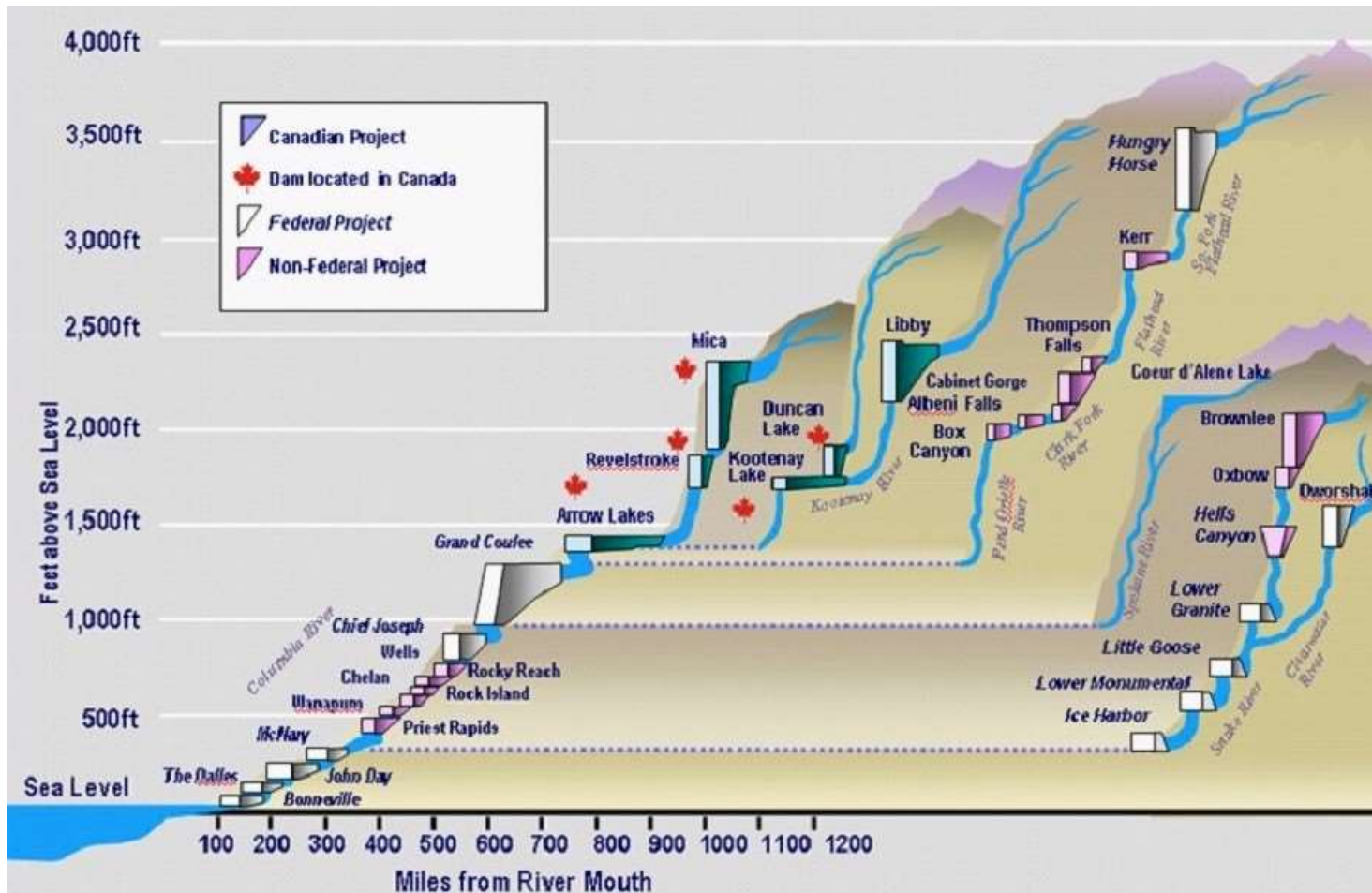
- A 200 foot high, 381 foot long concrete arch dam
- 208 MW facility producing 1.1M mwh/yr
- Salish Kootenai Dam's reservoir is the top ten feet of Flathead Lake with 1.2 MAF



- Salish Kootenai Dam is part of the Columbia River basin flood control system coordinated through the Pacific Northwest Coordination Agreement.
- Recent engineering and safety studies indicate the facility is in good operating order and has an expected useful life that exceeds the balance of the FERC license term (i.e. 2035)

10/9/2015

Salish Kootenai Dam is a part of the Columbia Hydroelectric Resource Base



Energy Keepers Inc.



- IN SALISH- SXwNQE?ELS L SUWEČM
- IN KOOTENAI- KSUKĚIĚMUMAĚ 'A·KAĚMUKWA'ITS
- WE DO BUSINESS AS - ENERGY KEEPERS, INC.
- WE ARE THE TRIBALLY OWNED CORPORATION OF THE CONFEDERATED SALISH AND KOOTENAI TRIBES TASKED WITH ACQUIRING, OPERATING, MANAGING, AND MARKETING THE POWER FROM THE SALISH KOOTENAI HYDROELECTRIC PROJECT ON THE FLATHEAD INDIAN RESERVATION.

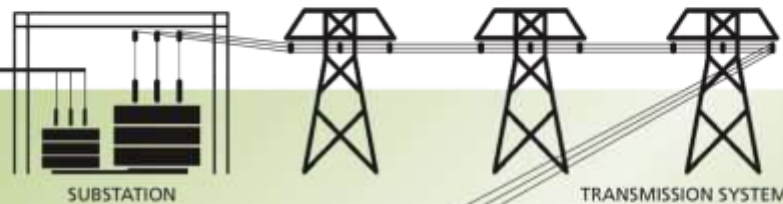
EKI Strategy

Independent Power Producer (IPP)

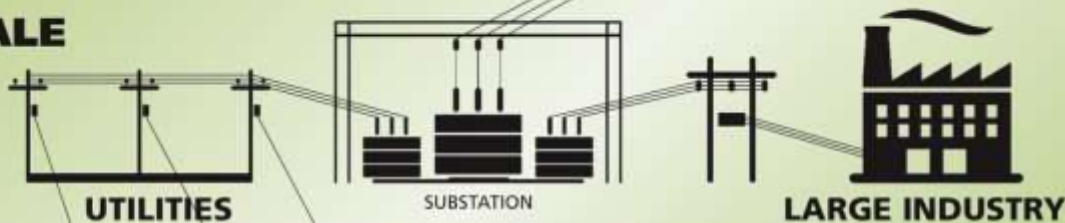
EKI will sell power generated at Kerr in the wholesale market to a variety of customers who will either use it directly or resell the power in the retail market.



KERR PROJECT

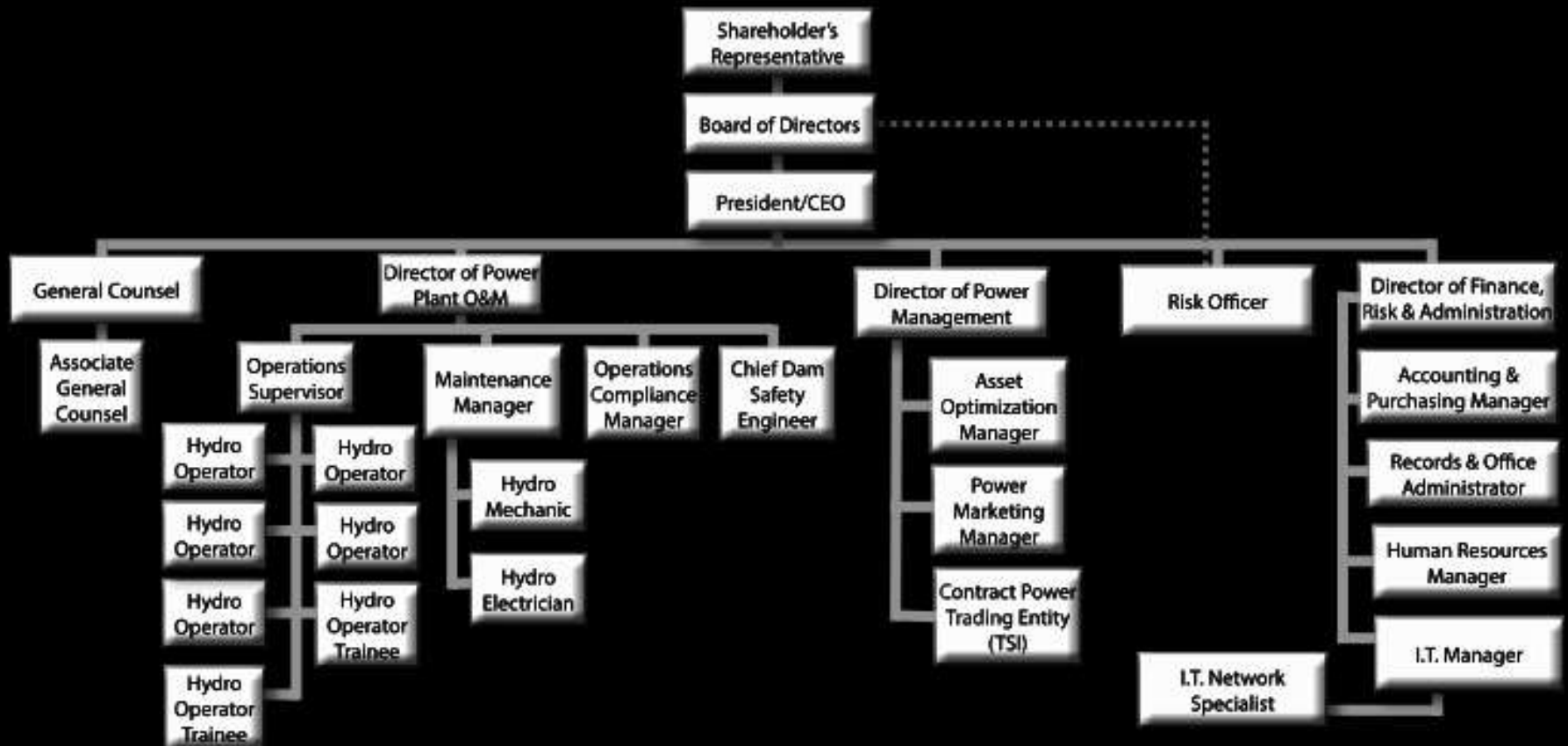


WHOLESALE MARKET



RETAIL MARKET





Vision and Goals Achieved



- 9/5/2015 - EKI/CSKT acquired Salish Kootenai Dam
- 1st time in 80 years we have control of one of our major resources, Flathead Lake and the Lower Flathead River
- We have create 27 well paid jobs
- Most of those jobs are filled with skilled and trained Tribal Members
- Through EKI as a Section 17 Corp. CSKT will realize all of the economic benefit of the facility.

10/9/2015



Stay Connected:
energykeepersinc.com