



Nothing is larger than life.™

Leading experts across multiple disciplines

Founding Team



Ahmad Wani
Chief Executive Officer

MS Earthquake & Structural Engineering
@Stanford



Nicole Hu
Chief Technology Officer

Computer Science @Stanford



Dr. Timothy Frank
Board Observer

Ph.D. Civil Engineering @Stanford

Renowned emergency managers and policy experts



Craig Fugate
Chief Emergency Manager
@One Concern

Former: Administrator of FEMA



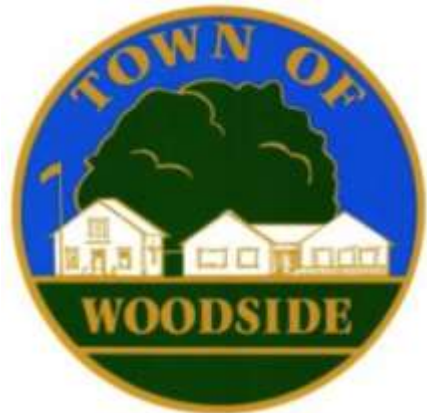
Gen David Petraeus
Special Advisor and Investor
Former: Director - CIA



Richard Serino
Global Engagement - Federal & World
Markets
Former: Deputy Administrator -
FEMA; Former: Chief - Boston EMS



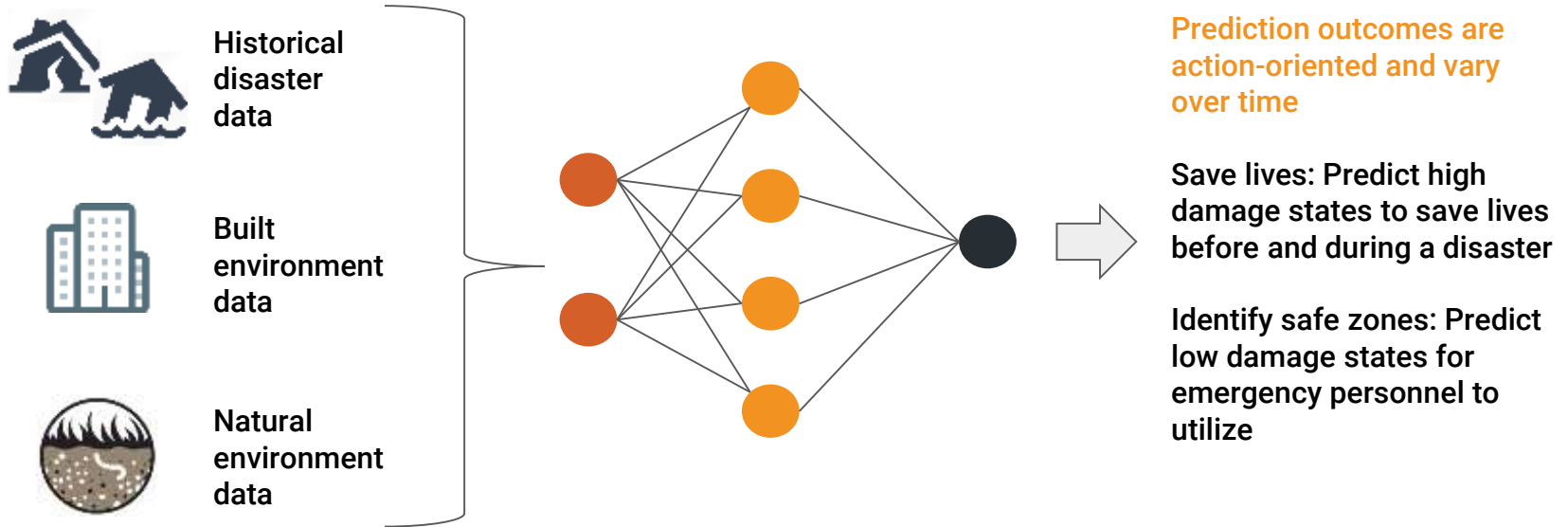
Judith Rodin
Board Member
Former: Head of Rockefeller Foundation

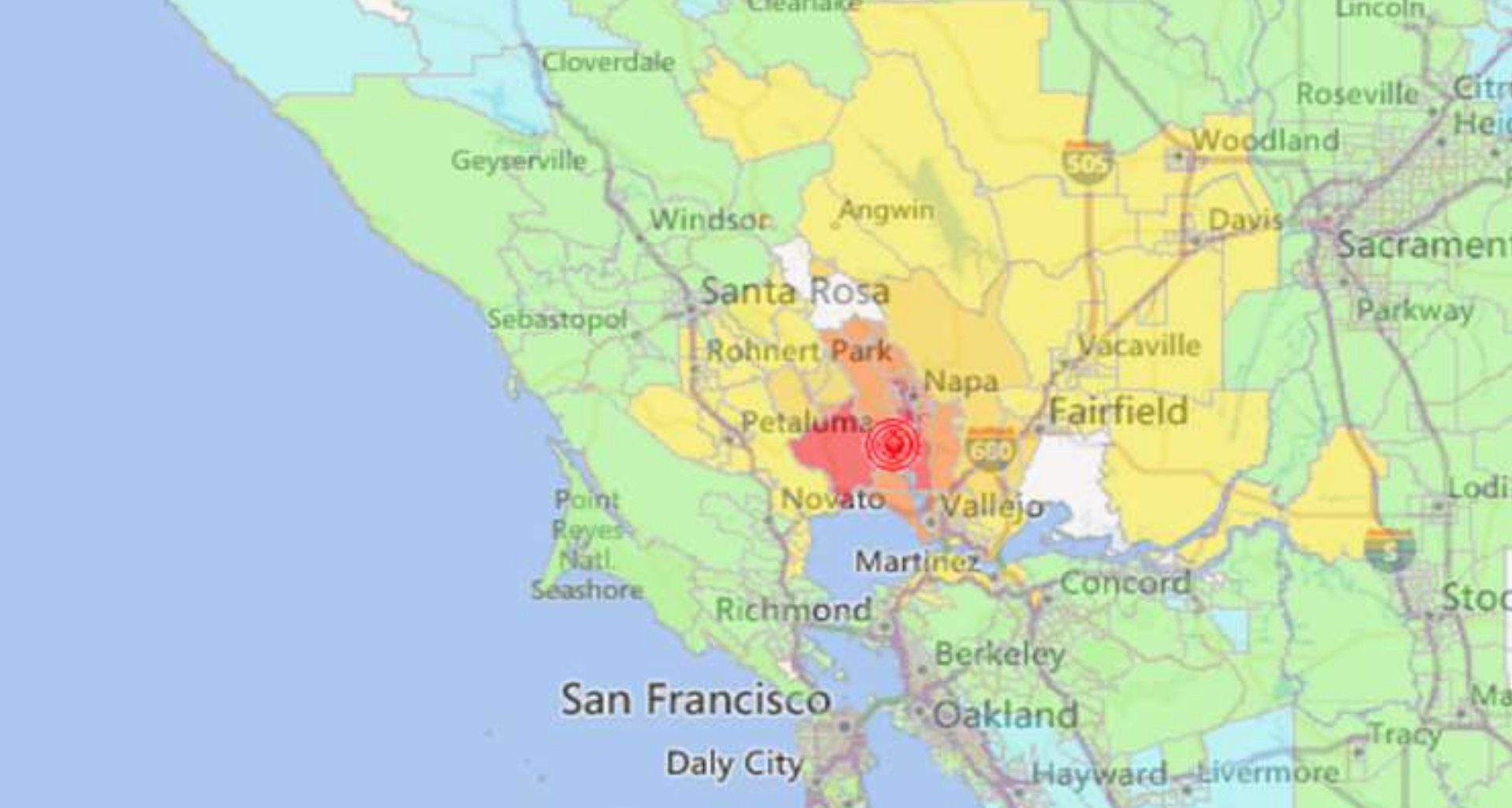


City of Seattle

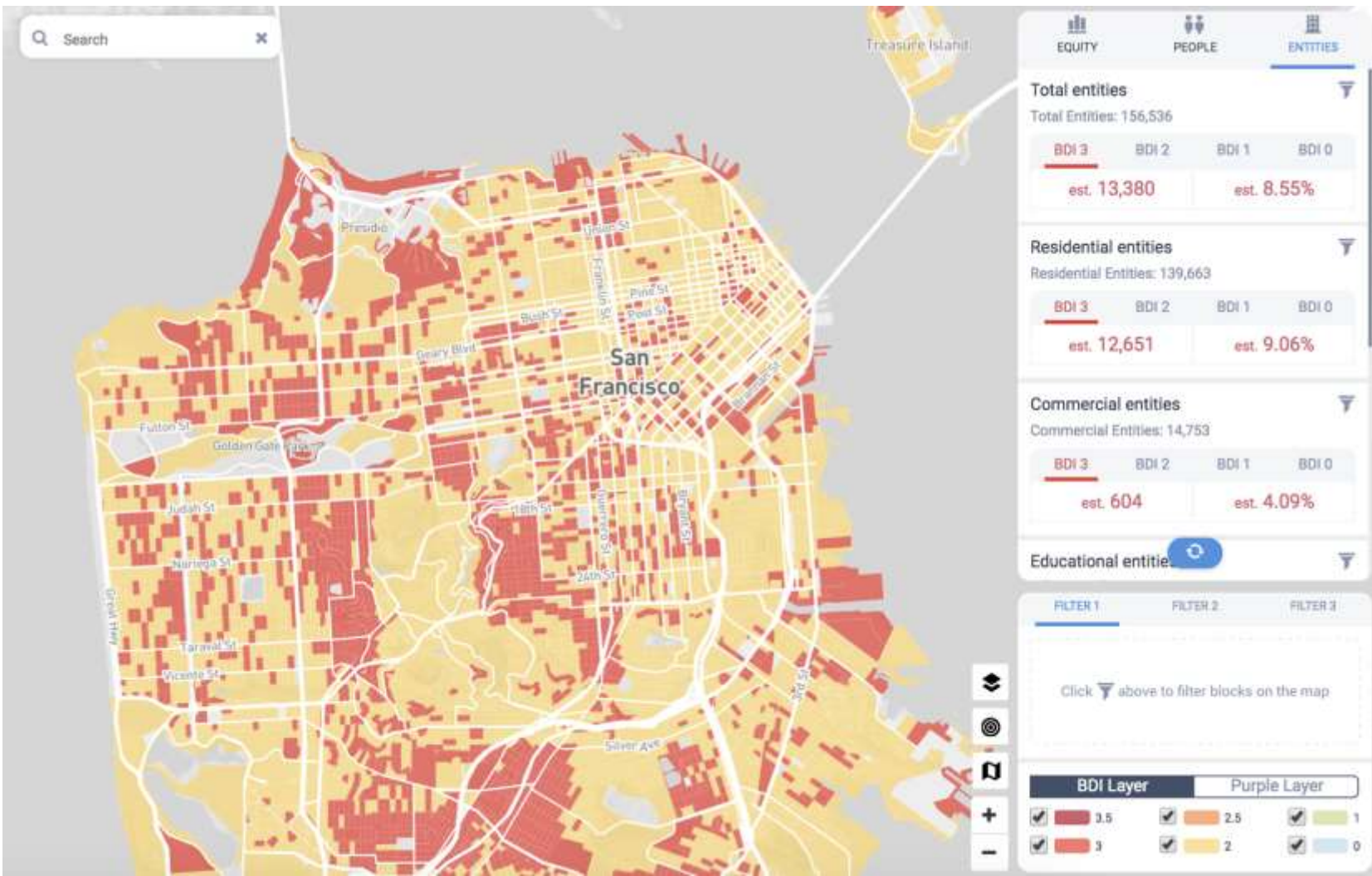


The only solution to bring Artificial Intelligence & Machine Learning to Emergency Management

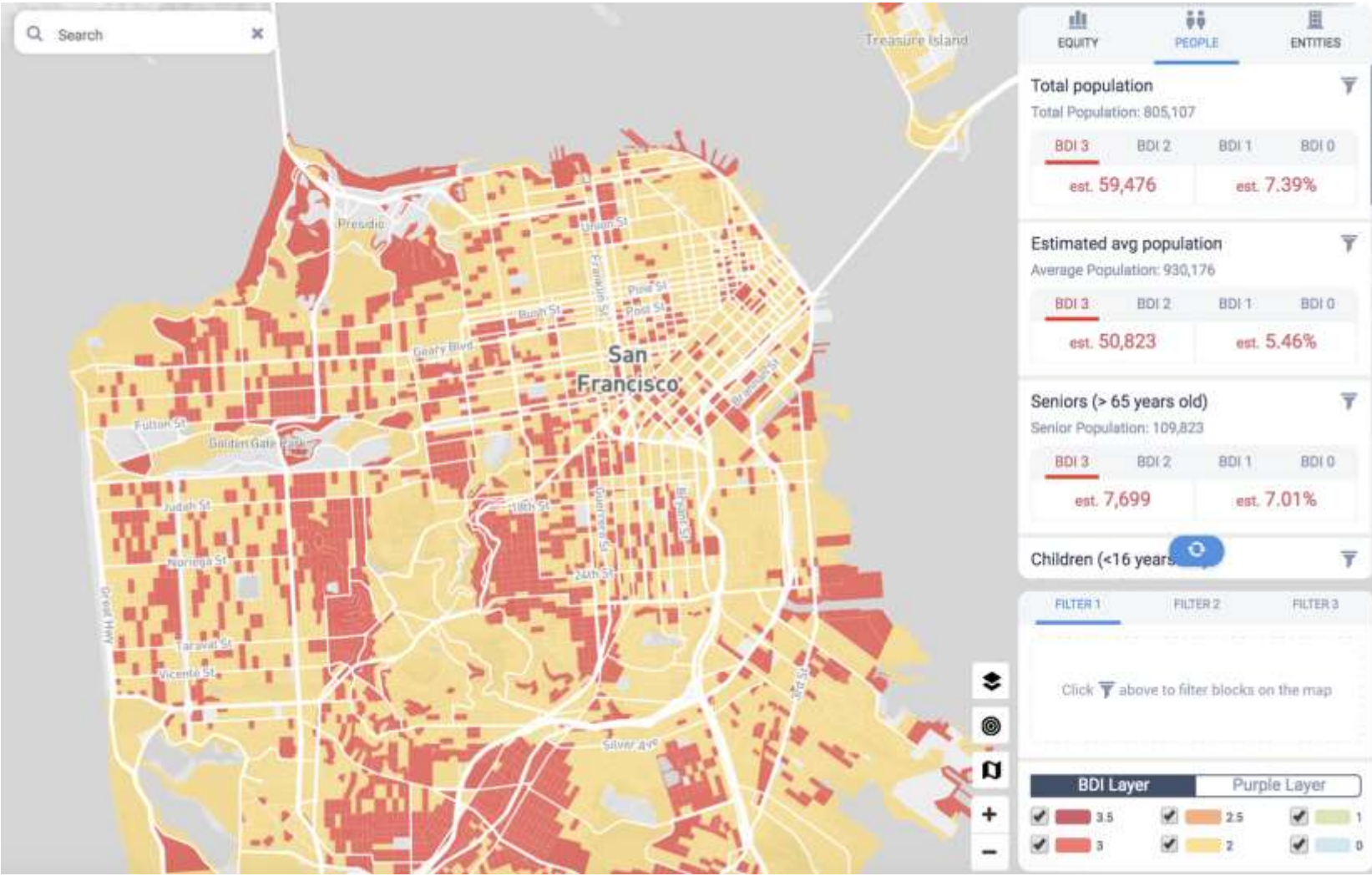




Impacts to Buildings

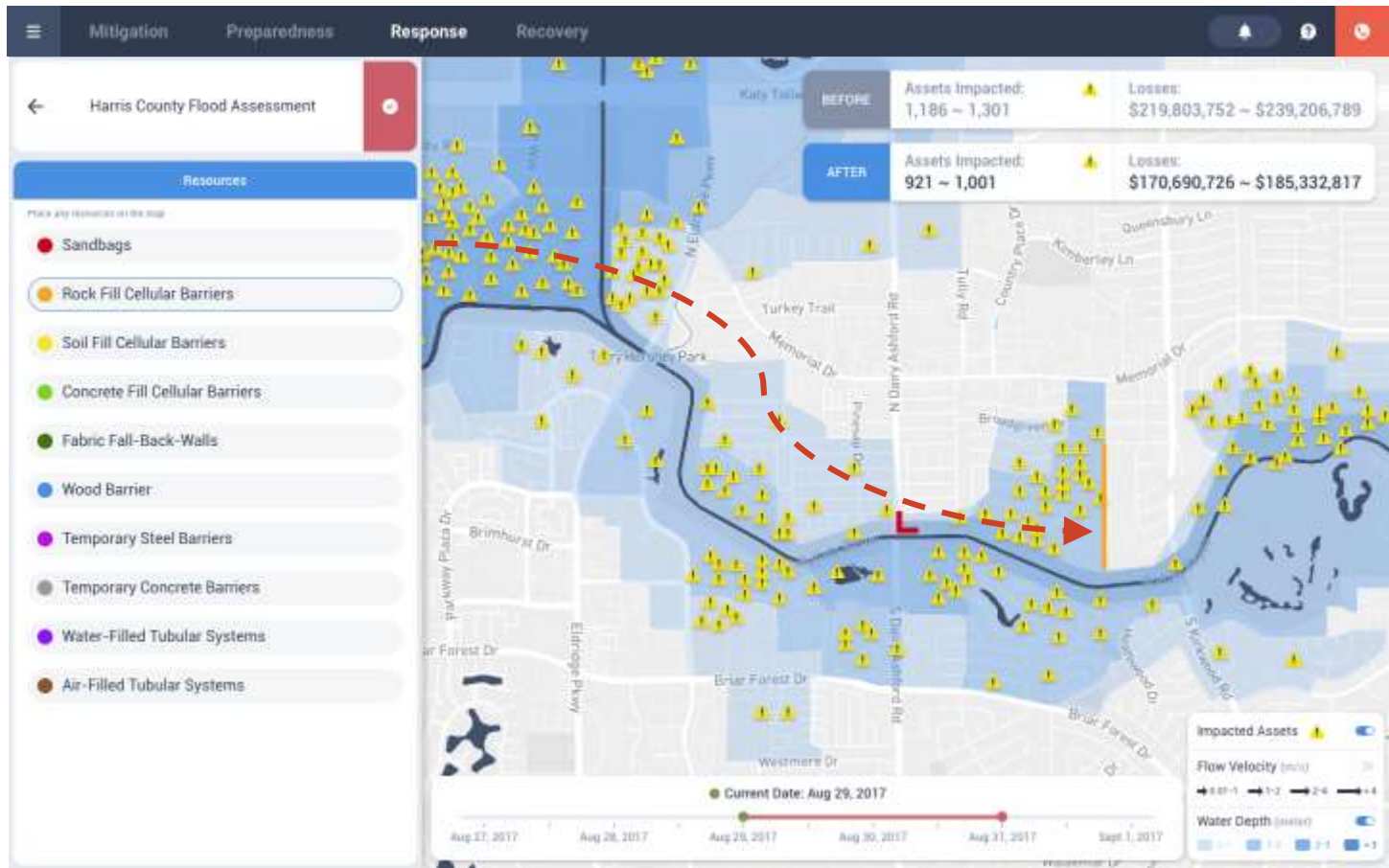


Impacts to People



Flood

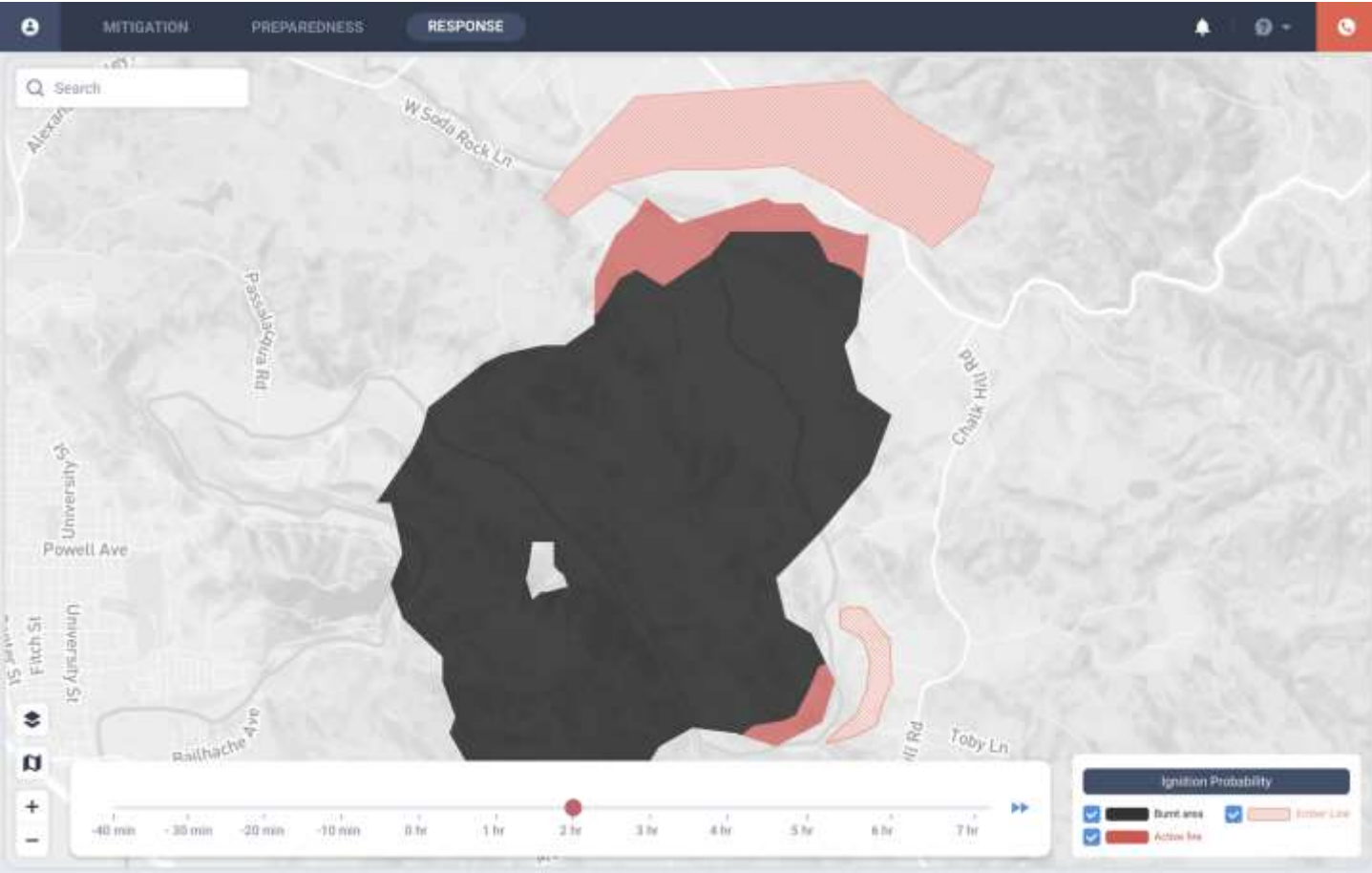




Fire



Draw the timeline forwards to see predicted path of active fire



Evaluate fire behavior

- Draw time slider into 1 hour fire spread projections
Identify how the fire is likely to behave
Identify where the fire is likely to spread

An aerial view of a city, likely San Francisco, with a dark overlay. The image features several white UI icons: a hexagon with three horizontal lines and a circle, a circle with three horizontal lines, a circle with a horizontal line and a downward arrow, and a hexagon with three horizontal lines and a circle. The text "Join the Resilience Movement" is centered in the middle of the image.

Join the **Resilience** Movement



one
concern