



NATIONAL  
FARM to SCHOOL  
NETWORK

*Growing Stronger Together*



# State Farm to School Legislative Trends

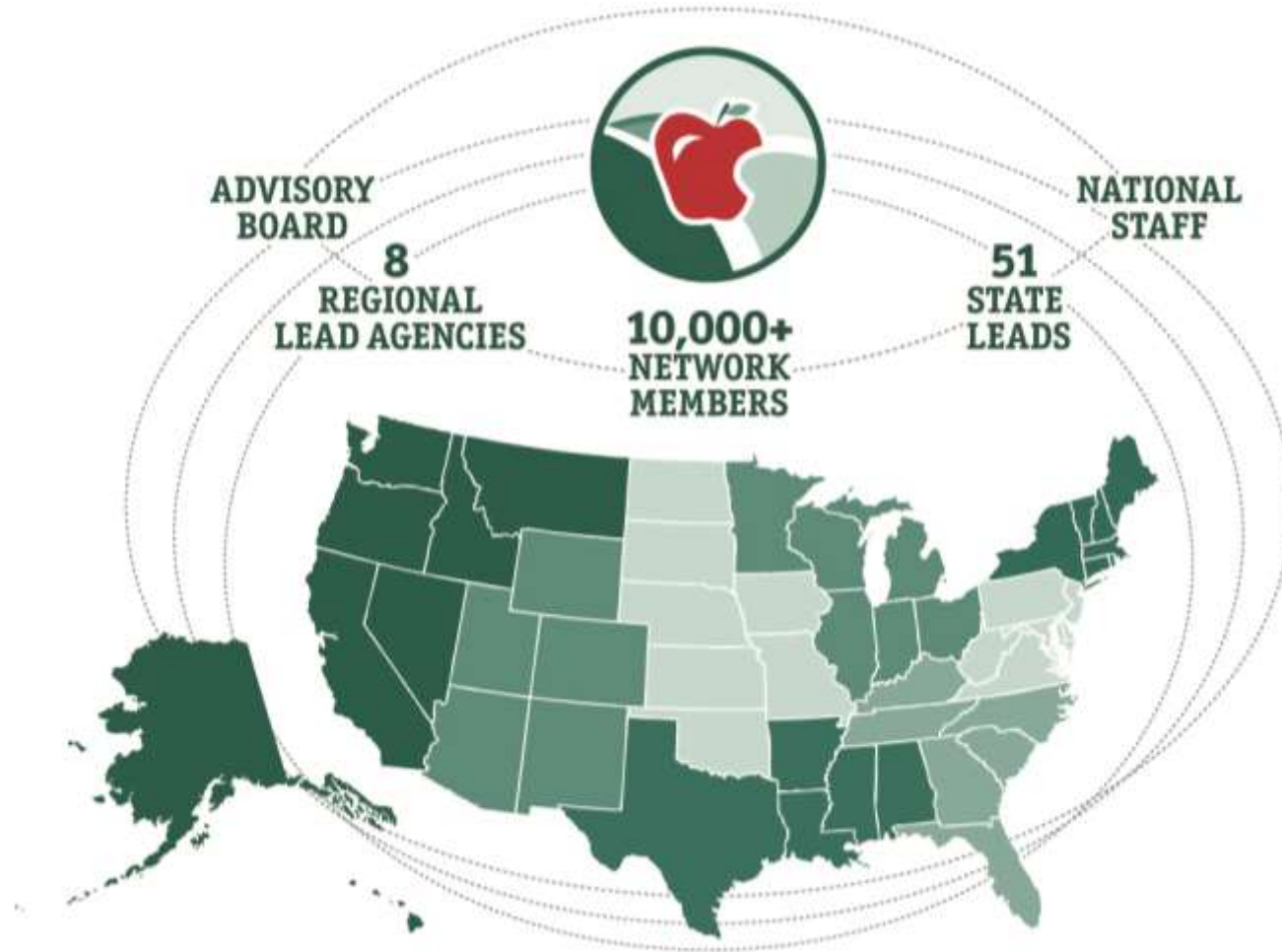
December 2015

Natalie Talis  
Policy Associate



# NATIONAL FARM to SCHOOL NETWORK

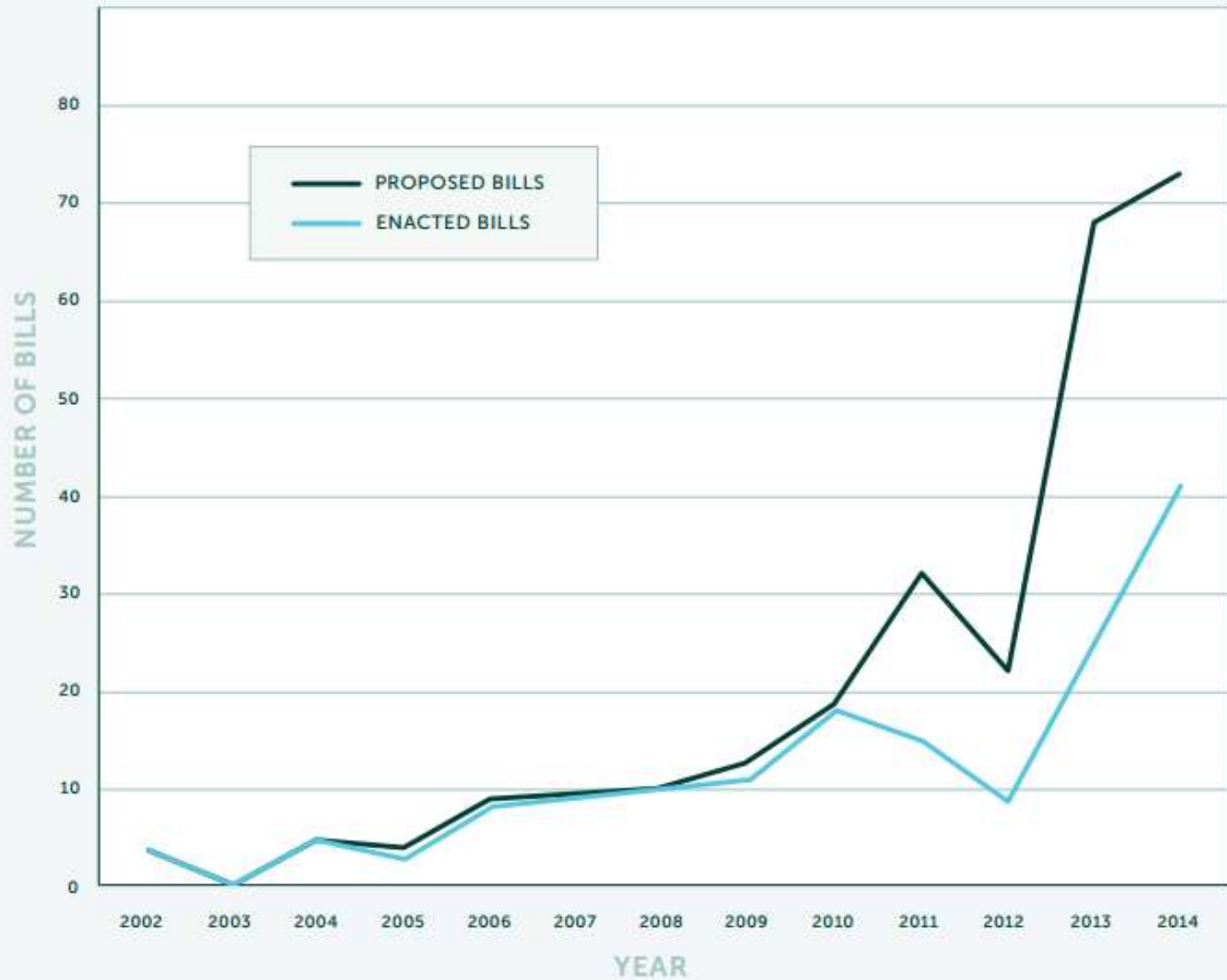
*Growing Stronger Together*



# Types of state policies

- Reimbursement for local procurement
- Funding for other farm to school activities and staff
  - Farm to School Coordinators
  - Educational programming, gardens
- Regulatory changes to support farm to school
  - Small purchase thresholds
  - Food safety restrictions
  - Local procurement preference
- Setting the stage for policy
  - Developing food policy councils or task forces
  - Farm to school week/month proclamations

### STATE FARM TO SCHOOL LEGISLATION 2002-2014



# Trends in 2014

2014 MARKED AN ACTIVE YEAR FOR STATE LEGISLATURES PROPOSING AND ENACTING FARM TO SCHOOL LEGISLATION:

**24 STATES**

INCLUDING D.C.

**INTRODUCED OVER 70**

farm to school bills and resolutions

**22 STATES**

INCLUDING D.C.

**ENACTED OVER 40**

farm to school bills

**9 STATES**

INCLUDING D.C.

**ESTABLISHED OR CONTINUED FUNDING**

for farm to school through appropriations,  
grants or official state funds

- New offices, councils or taskforces
- Focus on aggregation, processing and distribution of local foods (e.g. food hubs)
- School gardens
- Support through proclamations and resolutions

# What's Happened This Year

- Oregon: .05 reimbursement for school meals
- New Mexico: Over \$350,000 for local products
- Louisiana: Small purchase threshold to federal level, Urban ag incentives
- Hawaii: Farm to School Coordinator in Dept. of Ag and official Farm to School program
- Arkansas: Governor's proclamation in support of farm to school

# What's Next?

- Next farm to school state policy report due Fall 2016
- Growing emphasis on local and institutional policy

