
ADVERSE CHILDHOOD EXPERIENCES

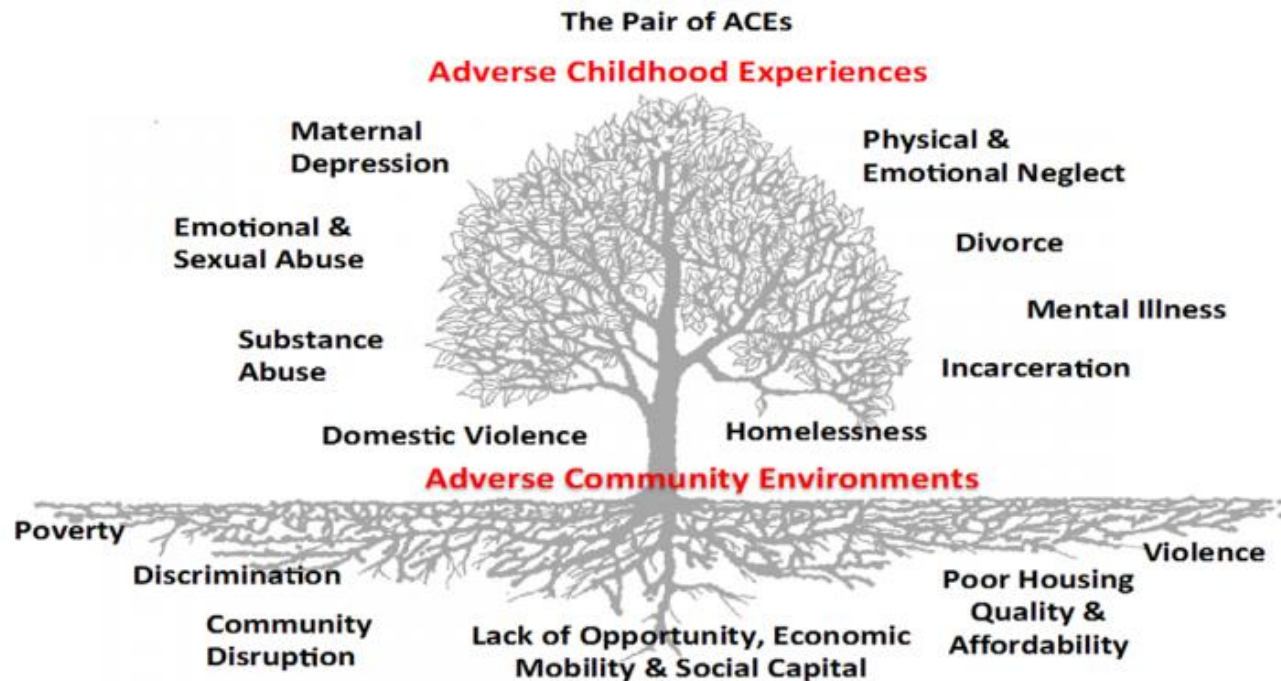
MATERNAL AND CHILD HEALTH FELLOWS

SEPTEMBER 9, 2020

Kate Bradford
Research Analyst
NCSL Health Program



WHAT ARE ADVERSE CHILDHOOD EXPERIENCES (ACES)?



- ACEs are potentially traumatic events that occur during childhood
- Decades of research have found:
 - Strong link between ACEs and a higher likelihood of negative health and behavioral outcomes later in life
 - High prevalence of ACEs
 - 45% of children
 - 60% of adults

Ellis, W., Dietz, W. (2017) A New Framework for Addressing Adverse Childhood and Community Experiences: The Building Community Resilience (BCR) Model. *Academic Pediatrics*. 17 (2017) pp. S86-S93. DOI information: 10.1016/j.acap.2016.12.011

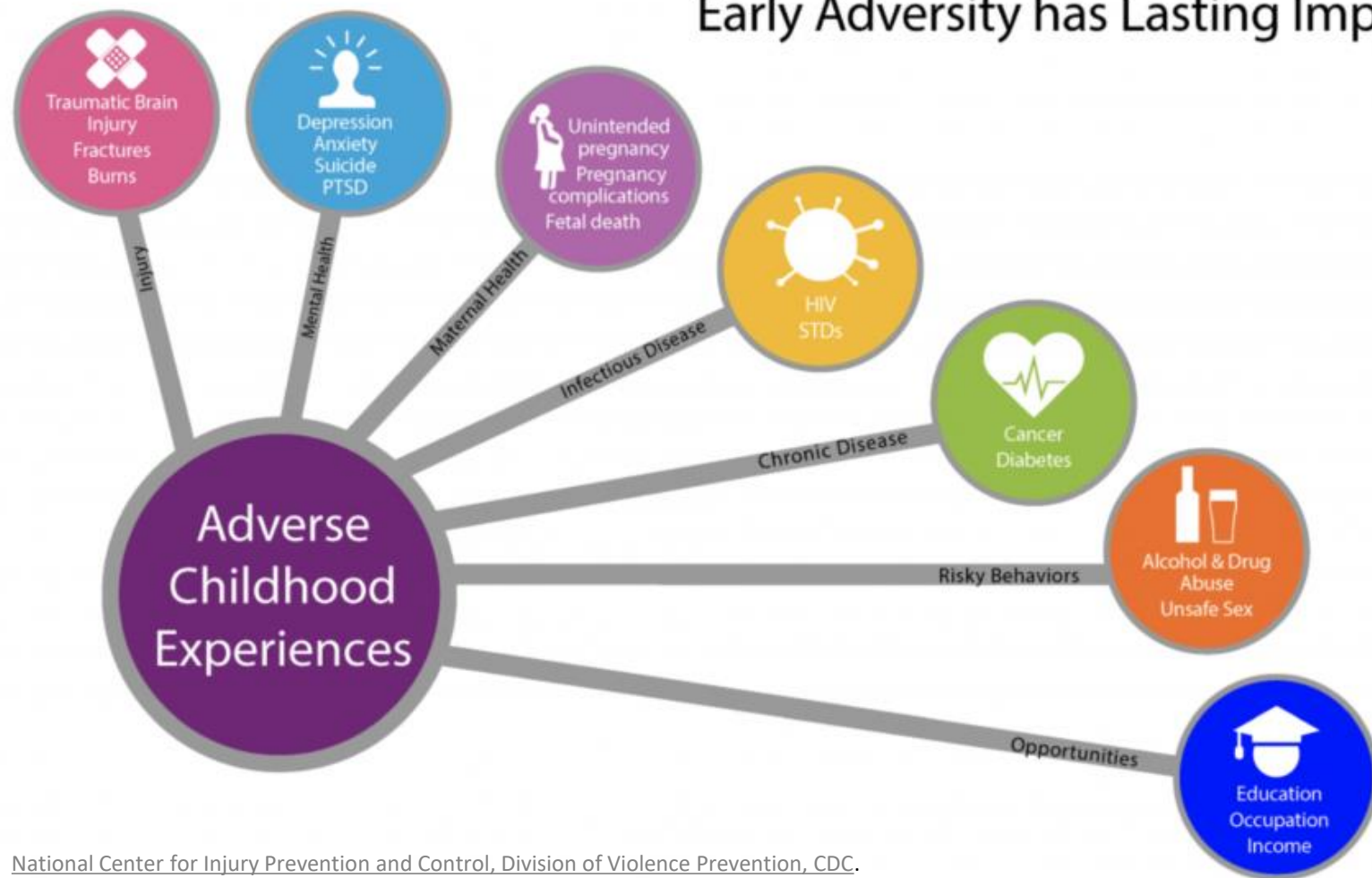


This work is licensed under the CC-BY-NC-SA 4.0 License. To view a copy of the license, visit <https://creativecommons.org/licenses/by-nc-sa/4.0/>. Noncommercial use of this material is allowed, including modification, with attribution to the license holder: Building Community Resilience, Redstone Global Center for Prevention and Wellness, Milken Institute School of Public Health, George Washington University. Visit go.gwu.edu/BCR for the original work.



WHAT ARE THE IMPACTS OF ACES?

Early Adversity has Lasting Impacts



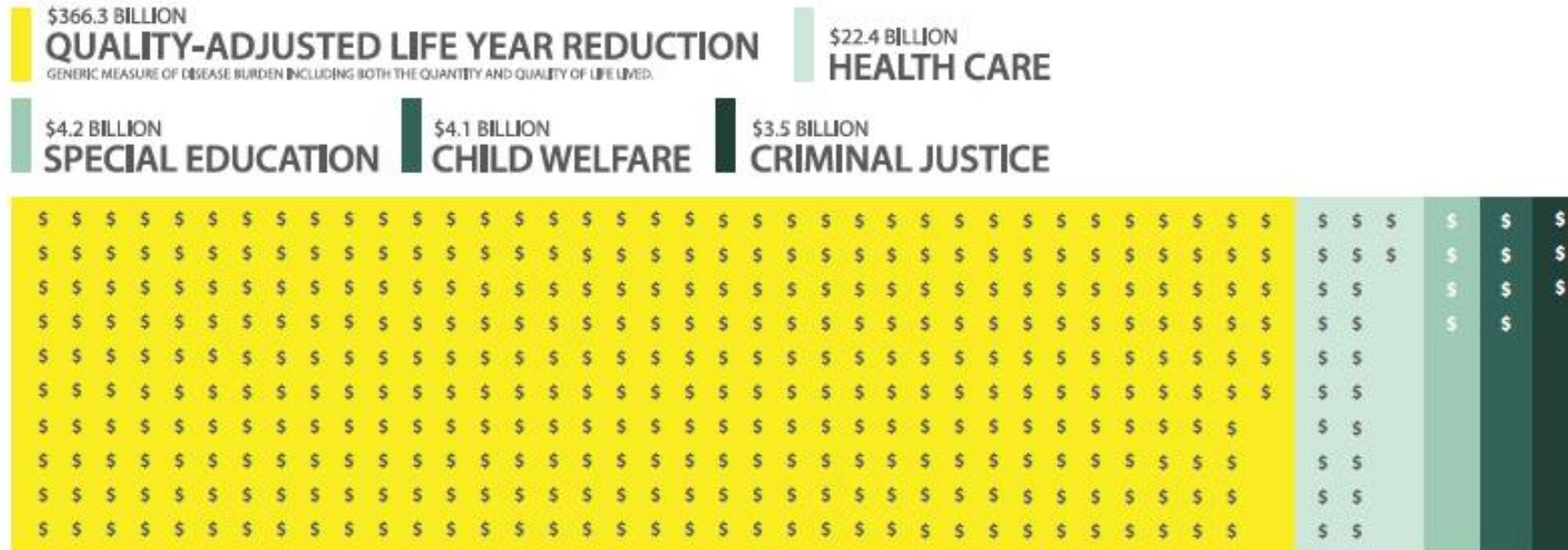
Toxic stress: A prolonged or excessive activation of the stress response system in the absence of protective relationships

- Underlying mechanism by which ACEs exert long-term effects on health

WHAT ARE THE IMPACTS OF ACES?

ECONOMIC TOLL

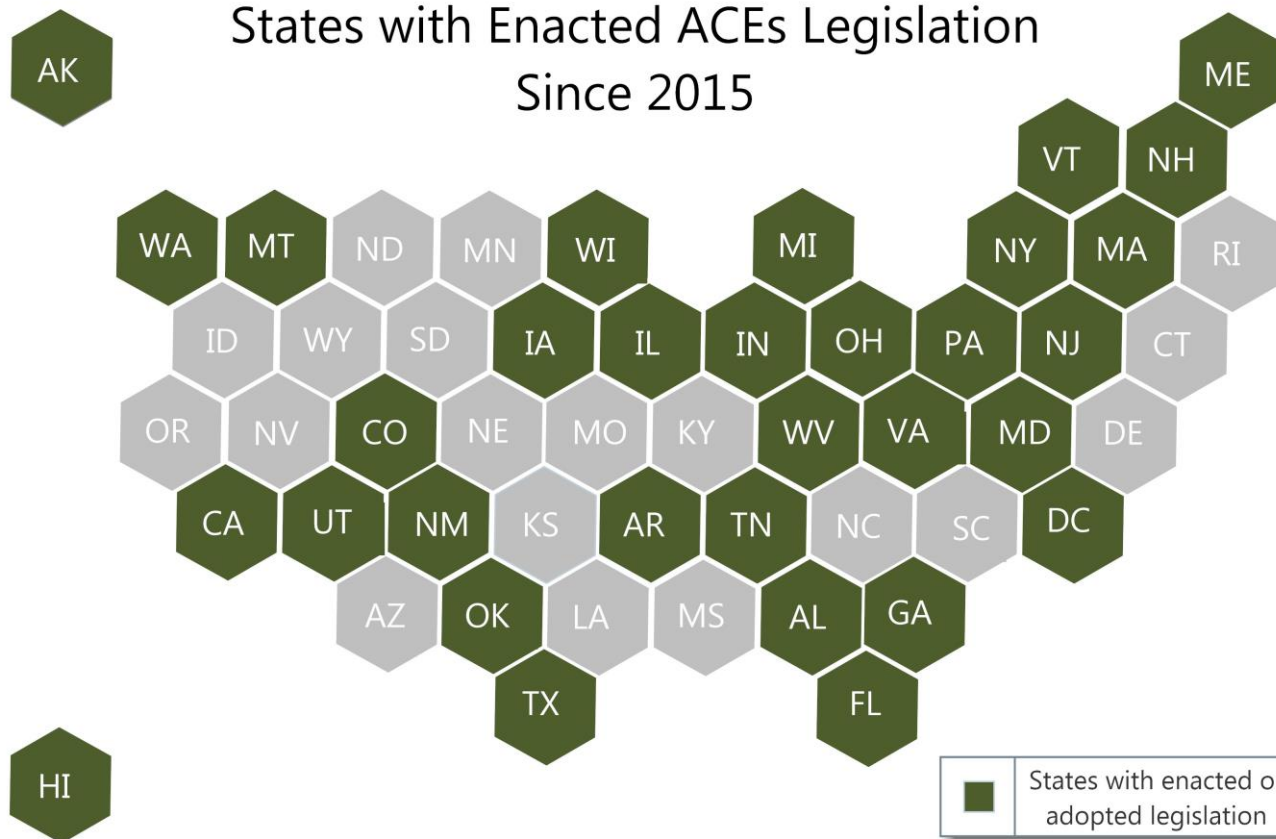
The lifetime cost of non-fatal child maltreatment (which covers 5 of 10 ACEs) incurred annually in the United States is **\$401 billion**.



Peterson, C., Florence, C., & Klevens, J. (2018). The economic burden of child maltreatment in the United States, 2015. *Child abuse & neglect*, 86, 178-183.

The findings and conclusions in this report are those of the authors and do not necessarily represent the official position of the Centers for Disease Control and Prevention.
2015 non-fatal child maltreatment estimates

STATE LEGISLATION ADDRESSING ACES

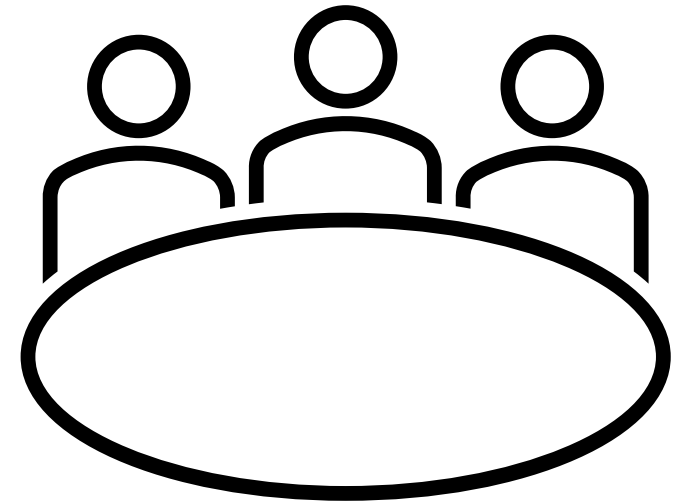


- [Injury Prevention database](#)
- Trends:
 - **New task force or work group**
 - **Trauma-informed workforce**
 - **Behavioral health supports**

ACEs legislation includes childhood trauma, child adversity, toxic stress and ACEs specifically

NEW TASK FORCE OR WORK GROUP

- **Hawaii** [SB 388](#) (2019) – Establishes a task force to evaluate students using an ACEs assessment protocol.
- **Maine** [HB 851](#) (2019) - Directs the convening of a task force on childhood trauma response guidance.
- **West Virginia** [HB 4773](#) (2020) - Creates a work group to investigate and recommend screening protocols for childhood trauma.



TRAUMA-INFORMED WORKFORCE



Trauma-Informed Care Implementation Resource Center, CHCS.

- **Tennessee** [HB 405](#) (2019) - Establishes a trauma-informed discipline policy in schools.
- **New York** [AB 4268](#) & [SB 4990](#) (2019) - Require workforce training on how to identify and appropriately respond to ACEs.
- **Indiana** [HB 1283](#) (2020) - Enacts a teacher preparation program curriculum with trauma-informed classroom instruction.

BEHAVIORAL HEALTH SUPPORTS

- **Utah** [HB 264](#) (2018) - Authorizes the State Board of Education to award grants for school-based mental health supports.
- **Colorado** [HB 1053](#) (2020) - Creates the early childhood mental health consultation program.
- **Pennsylvania** [HB 1210](#) (2020) - Makes COVID-19 disaster emergency school health and safety grants available, including to provide mental health services and trauma-informed care for students impacted by COVID-19.



RESOURCES

NCSL Resources

- [Injury Prevention Database](#)
- Webpage, [Adverse Childhood Experiences](#)
- LegisBrief, [Reducing the Effects of Adverse Childhood Experiences](#)
- Brief, [Preventing and Mitigating the Effects of Adverse Childhood Experiences](#)
- Brief, [Early Childhood Home Visiting: What Legislators Need to Know](#)

Additional Resources

- [States' Efforts to Address Adverse Childhood Experiences Are Critical During COVID-19](#), National Academy for State Health Policy
- [Preventing Adverse Childhood Experiences During COVID-19](#), Association for State and Territorial Health Officials

Injury Prevention Legislation Database | Opioid Abuse Prevention

2/11/2020



Through this interactive database, the National Conference of State Legislatures provides up-to-date information about injury prevention legislation that has been introduced or enacted in the 50 states and the District of Columbia. Legislation is searchable by state, topic, keyword, year, status or primary sponsor.





Thank you!

Contact Information:

Kate Bradford

Research Analyst, Health Program

kate.bradford@ncsl.org | 303.856.1446

